

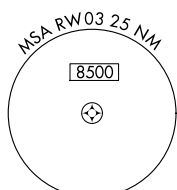
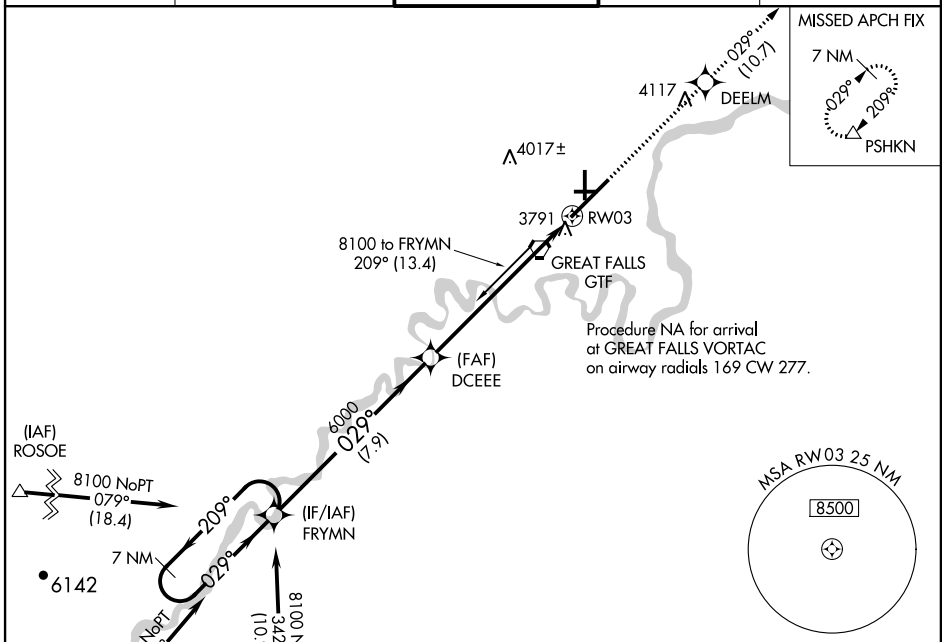
WAAS CH 70602 W03A	APP CRS 029°	Rwy Idg 10502 THRE 3680 Apt Elev 3680
---------------------------------	------------------------	--

RNAV (GPS) Y RWY 3

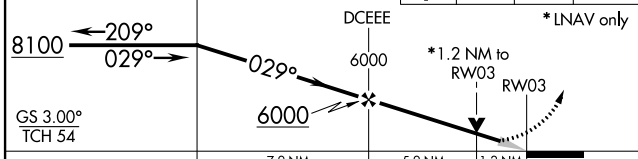
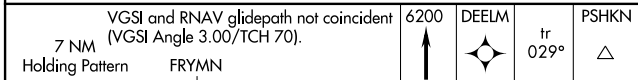
GREAT FALLS INTL (GTF)

<p>▼ For uncompensated Baro-VNAV systems, LNAV/VNAV NA below -22°C (-7°F) or above 21°C (69°F). DME/DME RNP-0.3 NA. For inoperative ALSF increase LNAV/VNAV visibility all Cats to RVR 4500.</p>	<p>ALSF-2</p>	<p>MISSED APPROACH: Climb to 6200 direct DEELM and on track 029° to PSHKN and hold.</p>
--	---------------	---

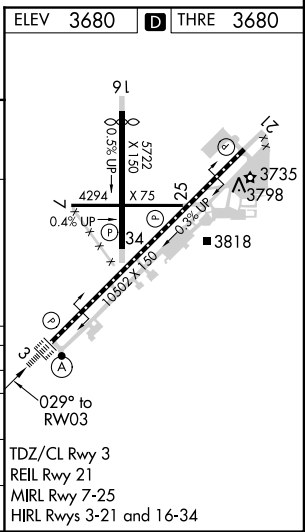
ATIS 126.6 269.0	GREAT FALLS APP CON 128.6 379.17	GREAT FALLS TOWER 118.7 282.2	GND CON 121.7 348.6	CLNC DEL 121.7 348.6
----------------------------	--	---	-------------------------------	--------------------------------



ELEV 3680	THRE 3680
-----------	-----------



CATEGORY	A	B	C	D
LPV DA	3880/24		200 (200-½)	
LNAV/VNAV DA	3952/24		272 (300-½)	
LNAV MDA	4140/24 460 (500-½)		4140/45 460 (500-¾)	
CIRCLING	4140-1 460 (500-1)		4140-1½ 460 (500-1½) 4240-2 560 (600-2)	



NW-1, 07 FEB 2013 to 07 MAR 2013

NW-1, 07 FEB 2013 to 07 MAR 2013