

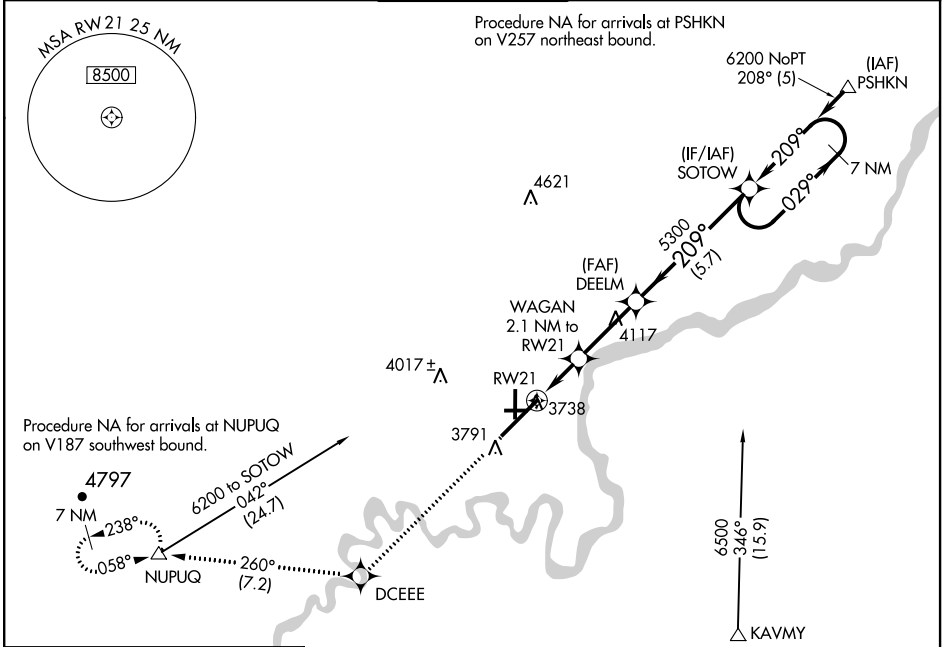
WAAS CH <b>90221</b> <b>W21A</b>	APP CRS <b>209°</b>	Rwy Idg <b>10502</b> THRE <b>3659</b> Apt Elev <b>3680</b>
--	------------------------	--

# RNAV (GPS) Y RWY 21

GREAT FALLS INTL (GTF)

<p><b>▼</b> DME/DME RNP-0.3 NA. For uncompensated Baro-VNAV systems, LNAV/VNAV NA below -22°C (-7°F) or above 20°C (68°F).</p>	<p>MISSED APPROACH: Climb to 8000 direct DCEE and on track 260° to NUPUQ and hold, continue climb-in-hold to 8000.</p>
--	--

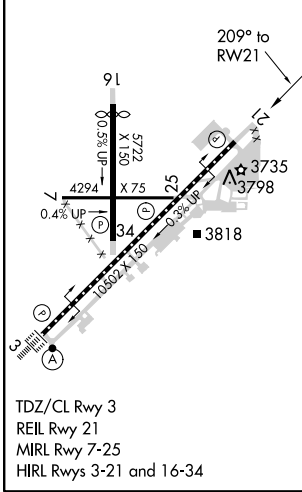
ATIS <b>126.6 269.0</b>	GREAT FALLS APP CON <b>128.6 379.17</b>	GREAT FALLS TOWER <b>118.7 282.2</b>	GND CON <b>121.7 348.6</b>	CLNC DEL <b>121.7 348.6</b>
----------------------------	--	---	-------------------------------	--------------------------------



NW-1, 07 FEB 2013 to 07 MAR 2013

NW-1, 07 FEB 2013 to 07 MAR 2013

ELEV 3680	<b>D</b>	THRE 3659
-----------	----------	-----------



TDZ/CL Rwy 3  
REIL Rwy 21  
MIRL Rwy 7-25  
HIRL Rwy 3-21 and 16-34

8000	DCEE	tr 260°	NUPUQ	VGSI and RNAV glidepath not coincident. (VGSI Angle 3.00/TCH 75).
				SOTOW 7 NM Holding Pattern
*LNAV only	WAGAN 2.1 NM to RWY 21	DEELM 5300		
	*0.8 NM to RWY 21			
	4380*	5300	6200	GS 3.00° TCH 59
	0.8	1.3 NM	2.9 NM	5.7 NM

CATEGORY	A	B	C	D
LPV DA		3859-3/4	200 (200-3/4)	
LNAV/ VNAV DA		3917-3/4	258 (300-3/4)	
LNAV MDA		4000-1	341 (400-1)	
CIRCLING	4120-1 440 (500-1)	4140-1 460 (500-1)	4140-1 1/2 460 (500-1 1/2)	4240-2 560 (600-2)