

APP CRS	Rwy Idg	10502
029°	THRE	3680
	Apt Elev	3680

RNAV (RNP) Z RWY 3

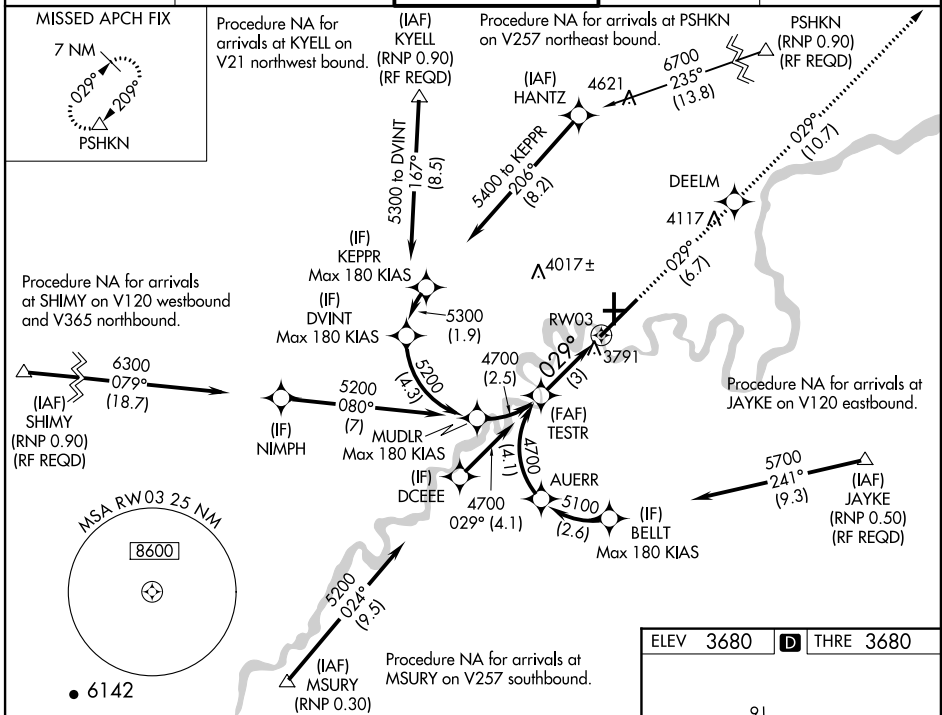
GREAT FALLS INTL (GTF)

GPS required. For uncompensated Baro-VNAV systems, procedure NA below -22°C (-8°F) or above 40°C (105°F). For inoperative ALSF increase RNP 0.10 DA visibility all Cats to RVR 4500, increase RNP 0.30 DA visibility all Cats to RVR 6000.

ALSF-2

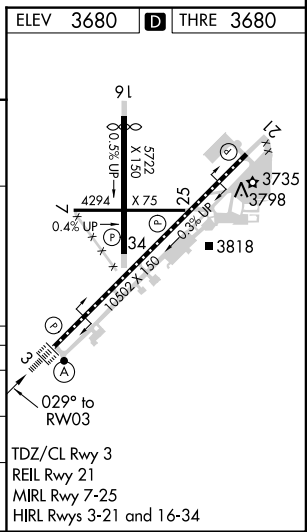
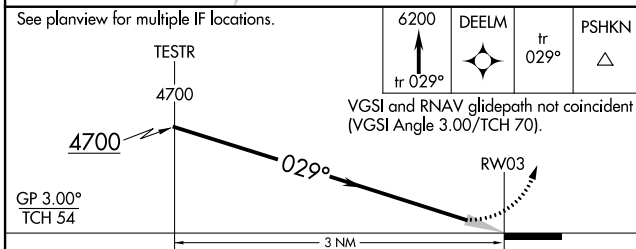
MISSED APPROACH: Climb to 6200 on track 029° to DEELM and on track 029° to PSHKN and hold.

ATIS 126.6 269.0	GREAT FALLS APP CON 128.6 379.17	GREAT FALLS TOWER 118.7 282.2	GND CON 121.7 348.6	CLNC DEL 121.7 348.6
----------------------------	--	---	-------------------------------	--------------------------------



NW-1, 07 FEB 2013 to 07 MAR 2013

NW-1, 07 FEB 2013 to 07 MAR 2013



CATEGORY	A	B	C	D
RNP 0.10 DA		3973/24	293 (300-½)	
RNP 0.30 DA		4079/45	399 (400-¾)	

AUTHORIZATION REQUIRED