

APP CRS	Rwy Idg	10502
209°	THRE	3659
	Apt Elev	3680

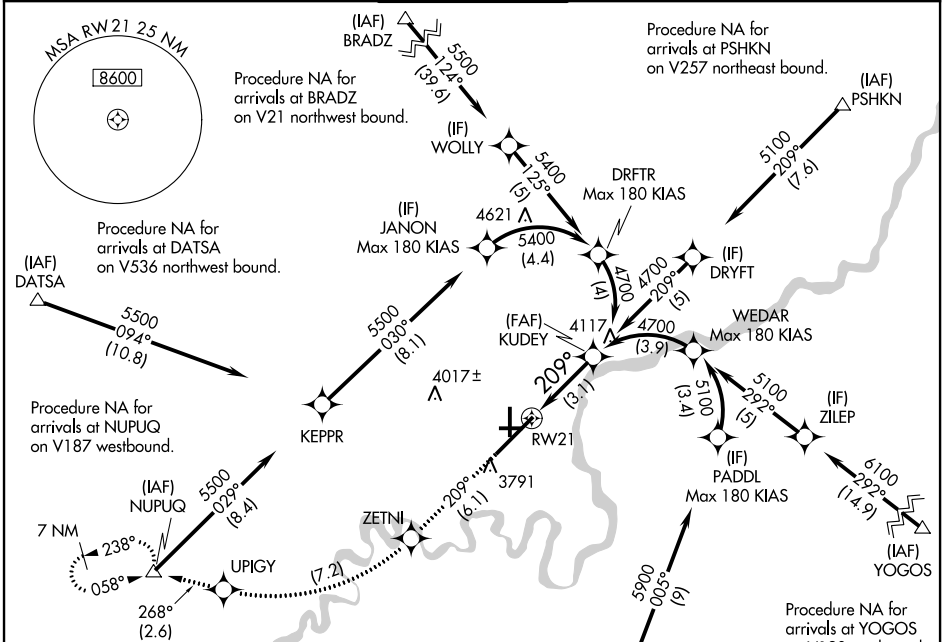
RNAV (RNP) Z RWY 21

GREAT FALLS INTL (GTF)

RF required. GPS required. For uncompensated Baro-VNAV systems, procedure NA below -22°C (-7°F) or above 40°C (104°F).

MISSED APPROACH: Climb to 8000 on track 209° to ZETNI right turn to UPIGY and on track 268° to NUPUQ and hold, continue climb-in-hold to 8000.

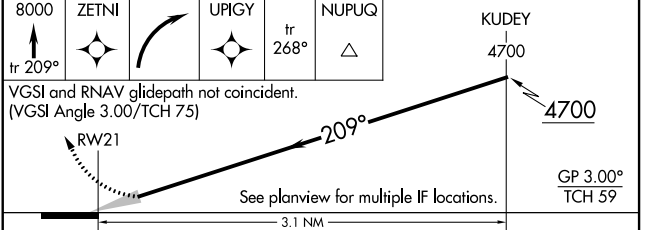
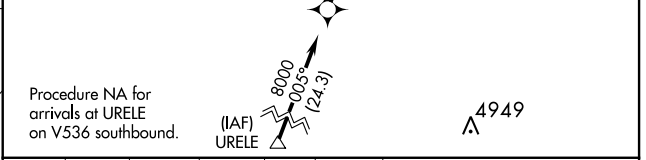
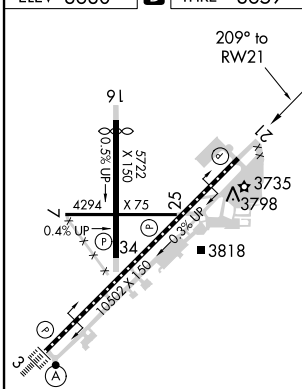
ATIS	GREAT FALLS APP CON	GREAT FALLS TOWER	GND CON	CLNC DEL
126.6 269.0	128.6 379.17	118.7 282.2	121.7 348.6	121.7 348.6



NW-1, 07 FEB 2013 to 07 MAR 2013

NW-1, 07 FEB 2013 to 07 MAR 2013

ELEV 3680	D	THRE 3659
-----------	----------	-----------



CATEGORY	A	B	C	D
RNP 0.10 DA		3932-7/8	273 (300-7/8)	
RNP 0.30 DA		3982-1	323 (400-1)	

TDZ/CL Rwy 3
REIL Rwy 21
MIRL Rwy 7-25
HIRL Rwy 3-21 and 16-34

AUTHORIZATION REQUIRED