

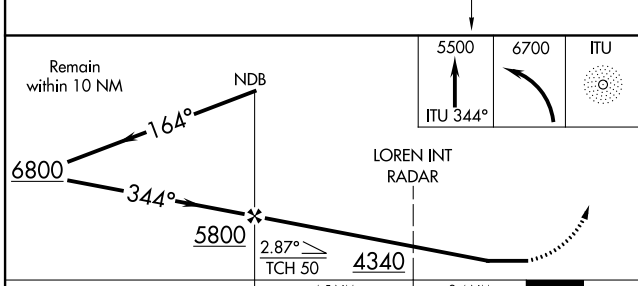
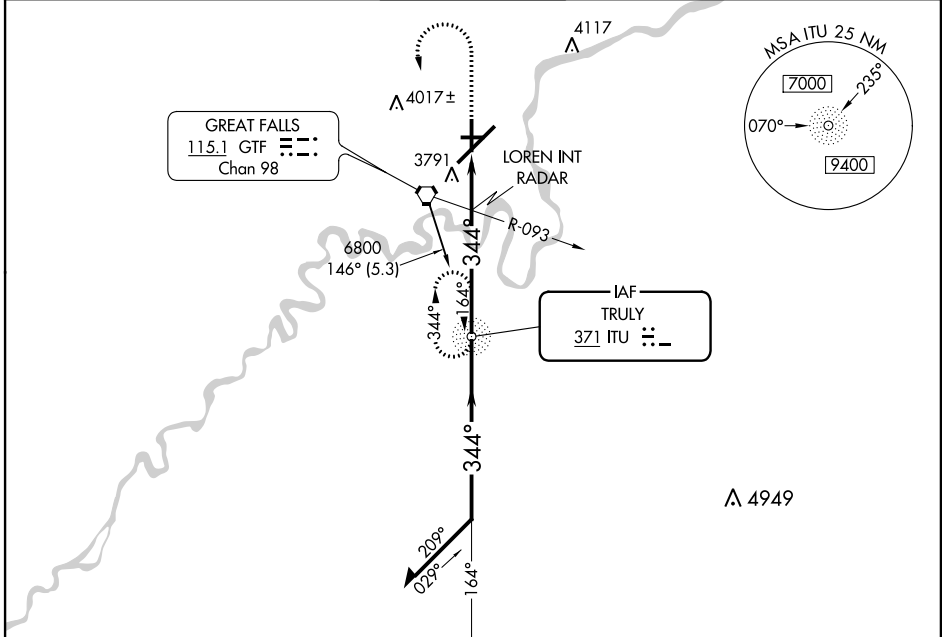
NDB RWY 34

GREAT FALLS INTL (GTF)

NDB ITU 371	APP CRS 344°	Rwy Idg TDZE Apt Elev	5070 3667 3680
-----------------------	------------------------	-----------------------------	---

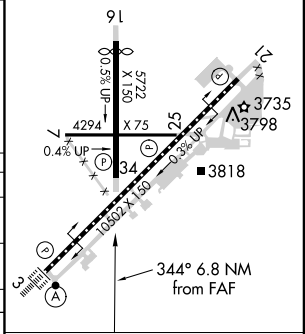
▽
▲ MISSED APPROACH: Climb to 5500 via ITU NDB 344° bearing, then left turn to 6700 direct ITU NDB and hold.

ATIS 126.6 269.0	GREAT FALLS APP CON 128.6 379.17	GREAT FALLS TOWER 118.7 282.2	GND CON 121.7 348.6	CLNC DEL 121.7 348.6
----------------------------	--	---	-------------------------------	--------------------------------



ELEV 3680	D	TDZE 3667
-----------	----------	-----------

TDZ/Cl Rwy 3
REIL Rwy 21
MIRL Rwy 7-25
HIRL Rws 3-21 and 16-34



CATEGORY	A	B	C	D
S-34	4340-1	673 (700-1)	4340-2 673 (700-2)	4340-2 1/4 673 (700-2 1/4)
CIRCLING	4340-1	660 (700-1)	4340-2 660 (700-2)	4340-2 1/4 660 (700-2 1/4)
LOREN INT/RADAR MINIMUMS				
S-34	4120-1	453 (500-1)	4120-1 1/4 453 (500-1 1/4)	4120-1 1/2 453 (500-1 1/2)
CIRCLING	4120-1 440 (500-1)	4140-1 460 (500-1)	4140-1 1/2 460 (500-1 1/2)	4240-2 560 (600-2)

FAF to MAP 6.8 NM					
Knots	60	90	120	150	180
Min:Sec	6:48	4:32	3:24	2:43	2:16

NW-1, 07 FEB 2013 to 07 MAR 2013

NW-1, 07 FEB 2013 to 07 MAR 2013