


LOC/DME I-SMR <b>111.3</b> Chan 50	APP CRS <b>032°</b>	Rwy Idg THRE Apt Elev <b>3680</b> <b>3680</b>
--	------------------------	---

# ILS RWY 3 (CAT II)

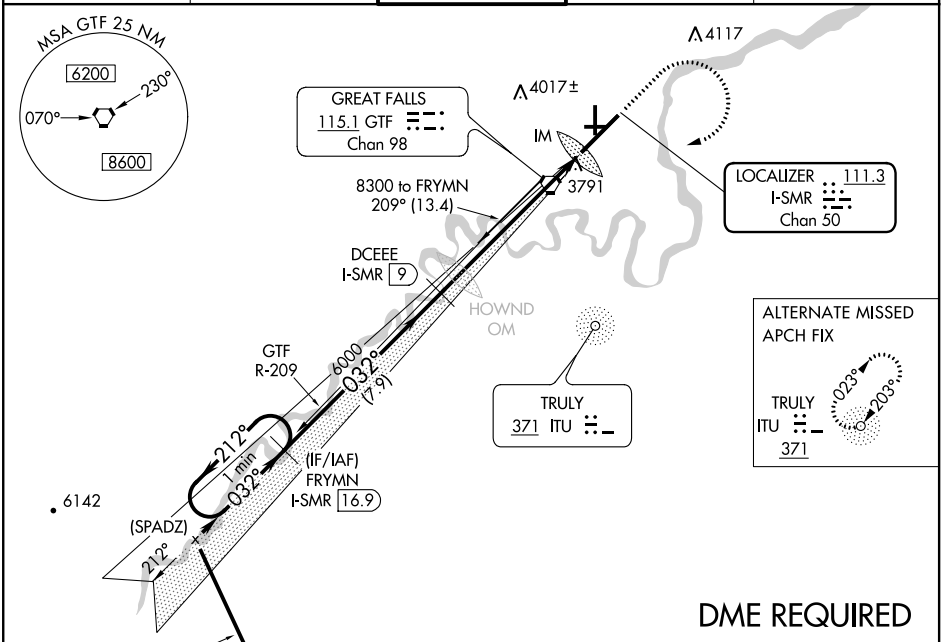
GREAT FALLS INTL (GTF)

**▼** RVR 1000 authorized with specific OPSPEC, MSPEC, or LOA approval and use of autoland or HUD to touchdown.

ALSF-2 

MISSED APPROACH: Climbs to 5000 then climbing right turn to 8300 direct GTF VORTAC then on GTF VORTAC R-209 to FRYM/N/I-SMR 16.9 DME and hold.

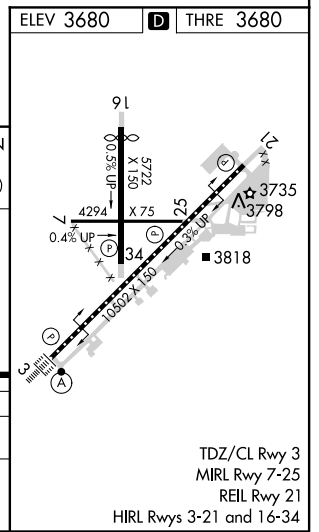
ATIS <b>126.6 269.0</b>	GREAT FALLS APP CON <b>128.6 379.17</b>	GREAT FALLS TOWER <b>118.7 282.2</b>	GND CON <b>121.7 348.6</b>	CLNC DEL <b>121.7 348.6</b>
----------------------------	--	---	-------------------------------	--------------------------------



NW-1, 07 FEB 2013 to 07 MAR 2013

NW-1, 07 FEB 2013 to 07 MAR 2013

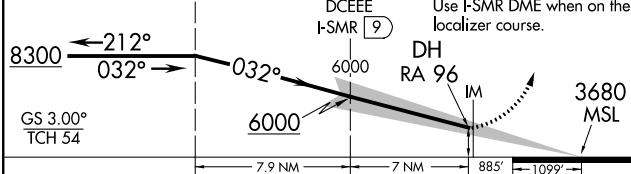
## DME REQUIRED



VGSI and ILS glidepath not coincident (VGSI Angle 3.00/TCH 70).  
One Minute Holding Pattern FRYMN I-SMR 16.9

5000	8300	GTF	GTF R-209	FRYMN I-SMR 16.9
------	------	-----	-----------	------------------

DCEEE I-SMR 9 Use I-SMR DME when on the localizer course.



CATEGORY	A	B	C	D
S-ILS 3	RA 96/12 100 DA 3780			

## CATEGORY II ILS - SPECIAL AIRCREW & AIRCRAFT CERTIFICATION REQUIRED