

GREAT FALLS, MONTANA

HI-VOR/DME or TACAN RWY 3

VORTAC GTF 115.1 Chan 98	APCH CRS 029°	Rwy ldg 10,502 TDZE 3674 Arpt Elev 3680
--	-------------------------	--

JAL 177 [USAF]

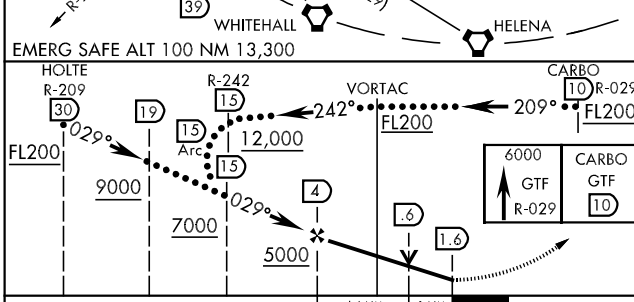
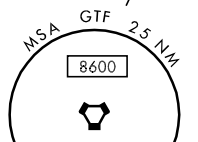
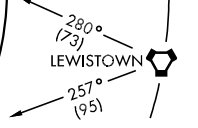
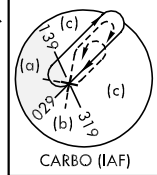
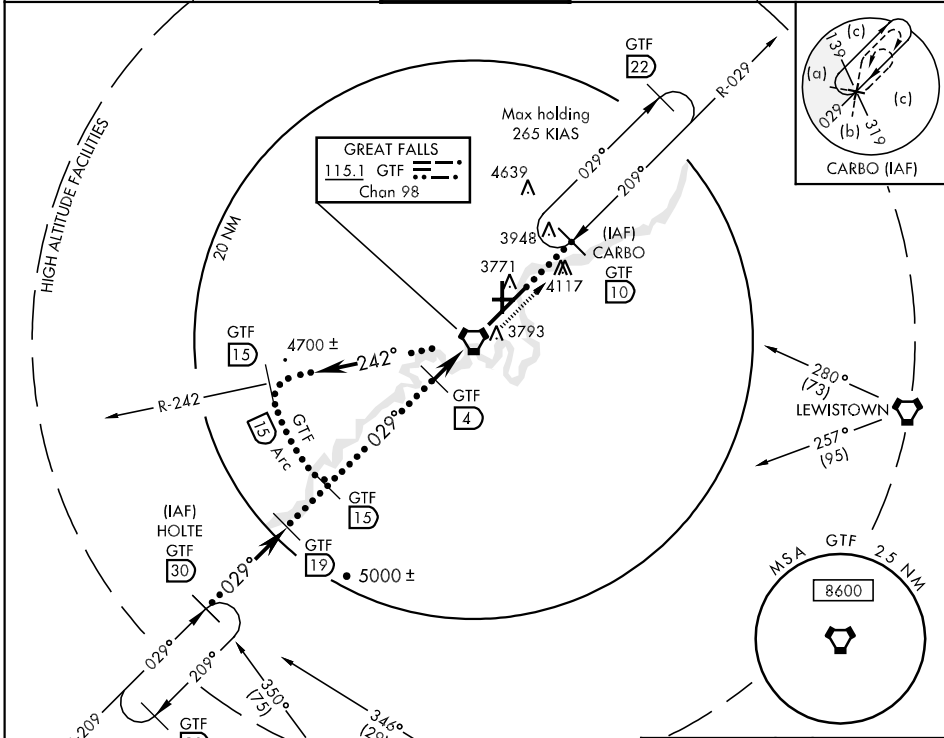
GREAT FALLS INTL (KGTF)

When ALS inop, increase CAT DE RVR to 60 and vis to 1 1/4 miles.

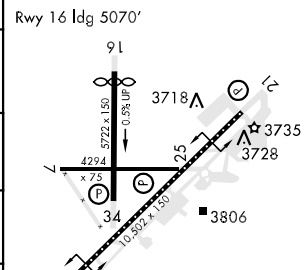


MISSED APPROACH: Climb to 6000 via GTF R-029 to CARBO 10 DME and hold.

ATIS 126.6 269.0	GREAT FALLS APP CON 128.6 379.17	GREAT FALLS TOWER 118.7 282.2	GND CON 121.7 348.6	CLNC DEL 121.7 348.6
----------------------------	--	---	-------------------------------	--------------------------------



ELEV 3680	TDZE 3674
-----------	-----------



CATEGORY	C	D	E
S-3*	4060/24 386 (400-1/2)	4060/50 386	(400-1)
CIRCLING	4140-1 1/2 460 (500-1/2)	4240-2 560 (600-2)	4420-2 3/4 740 (800-2 3/4)

TDZL/CL Rwy 3
REIL Rwy 21
MIRL Rwy 7-25
HIRL Rwy 3-21 and 16-34

GREAT FALLS, MONTANA
Amdt 2 05APR12

47°29'N-111°22'W

GREAT FALLS INTL (KGTF)

HI-VOR/DME or TACAN RWY 3

NW-1, 07 FEB 2013 to 07 MAR 2013

NW-1, 07 FEB 2013 to 07 MAR 2013