

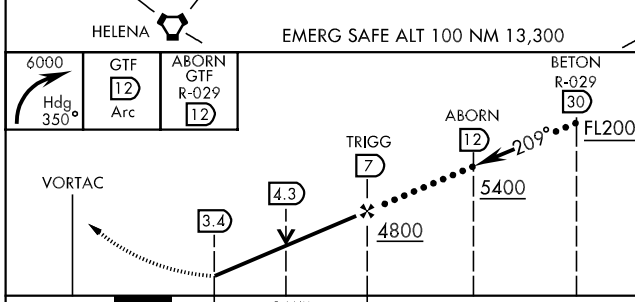
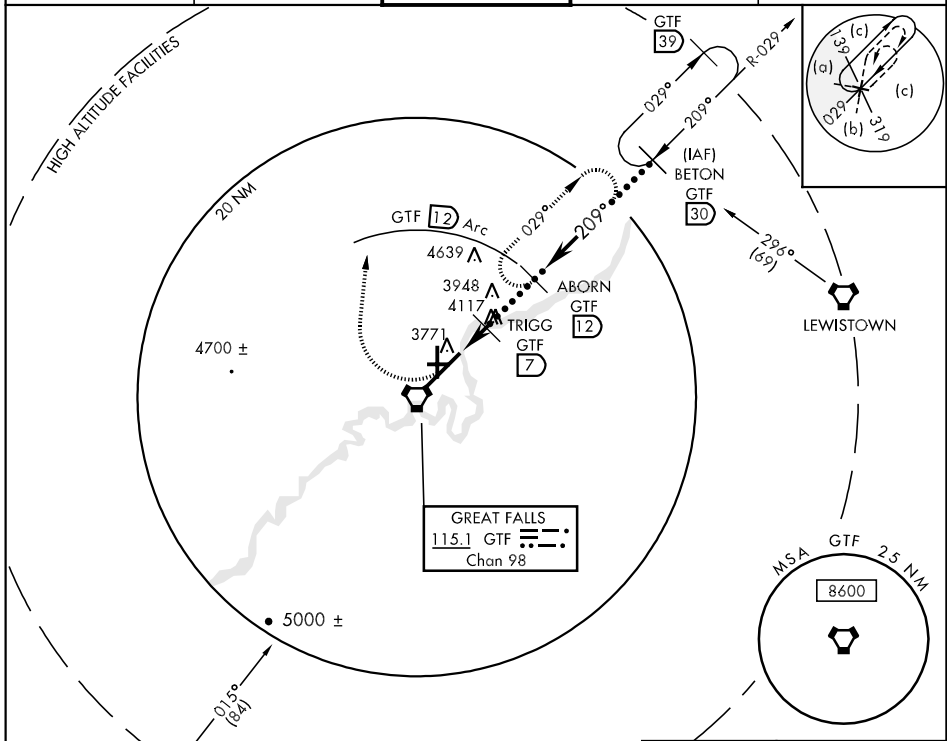
VORTAC GTF <b>115.1</b> Chan 98	APCH CRS <b>209°</b>	Rwy ldg <b>10,502</b> TDZE <b>3665</b> Arpt Elev <b>3680</b>
---------------------------------------	-------------------------	--

JAL-177 [USAF]

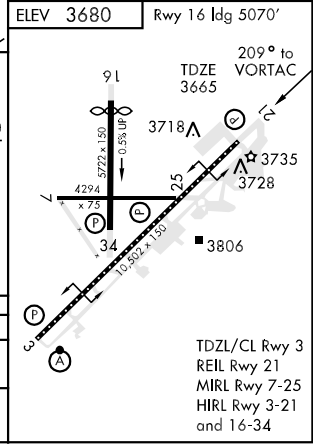
GREAT FALLS INTL (KGTF)

**▽** MISSED APPROACH: Climbing right turn to 6000 heading 350°, intercept GTF 12 DME Arc to ABORN 12 DME and hold.

ATIS <b>126.6 269.0</b>	GREAT FALLS APP CON <b>128.6 379.17</b>	GREAT FALLS TOWER <b>118.7 282.2</b>	GND CON <b>121.7 348.6</b>	CLNC DEL <b>121.7 348.6</b>
----------------------------	--	---	-------------------------------	--------------------------------



CATEGORY	C		D		E
S-21	4000-1	335	(400-1)		4000-1¼ 335 (400-1¼)
CIRCLING	4140-1½ 460 (500-1½)		4240-2 560 (600-2)		4420-2¾ 740 (800-2¾)



TDZL/CL Rwy 3  
REIL Rwy 21  
MIRL Rwy 7-25  
HIRL Rwy 3-21  
and 16-34

NW-1, 07 FEB 2013 to 07 MAR 2013

NW-1, 07 FEB 2013 to 07 MAR 2013