

HI-ILS or LOC/DME RWY 3

LOC I-SMR 111.3 Chan 50	APCH CRS 032°	Rwy ldg 10,502 TDZE 3680 Arpt Elev 3680
--------------------------------------	-------------------------	--

JAL 177 [USAF]

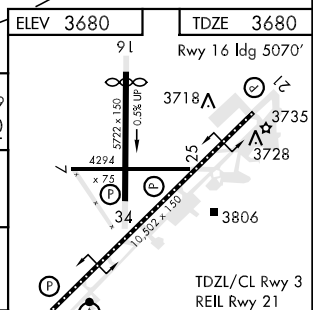
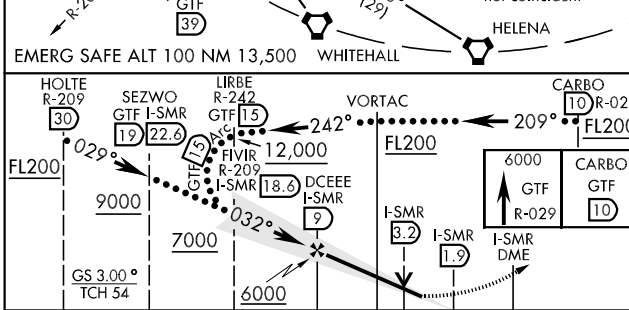
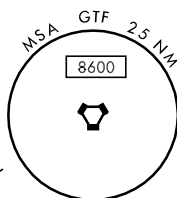
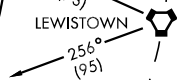
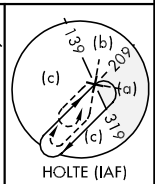
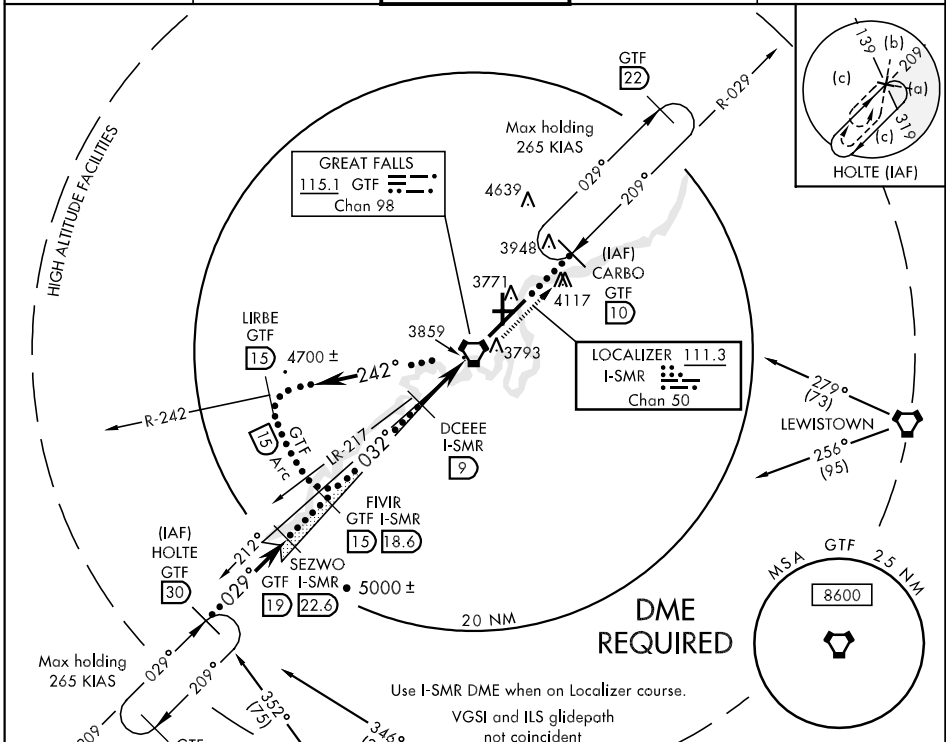
GREAT FALLS INTL (KGTF)

* When ALS inop, increase CAT CDE RVR to 40, vis to 3/4 mile.
 ** When ALS inop, increase CAT E vis to 1 3/4 miles.

ALS-2

MISSED APPROACH: Climb to 6000 via GTF VORTAC R-029 to CARBO 10 DME and hold.

ATIS 126.6 269.0	GREAT FALLS APP CON 128.6 379.17	GREAT FALLS TOWER 118.7 282.2	GND CON 121.7 348.6	CLNC DEL 121.7 348.6
----------------------------	--	---	-------------------------------	--------------------------------



CATEGORY	C	D	E
S-ILS 3 *	3880/18	200 (200-3%)	
S-LOC 3 **	4140/45	460 (500-7%)	
CIRCLING	4140-1 1/2	4240-2	4420-2 1/2
	460 (500-1 1/2)	560 (600-2)	740 (800-2 1/2)

FAF to MAP 7.1 NM					
Knots	120	140	160	180	200
Min:Sec	3:33	3:03	2:40	2:22	2:08

HI-ILS or LOC/DME RWY 3

NW-1, 07 FEB 2013 to 07 MAR 2013

NW-1, 07 FEB 2013 to 07 MAR 2013