

RNAV (GPS) RWY 35

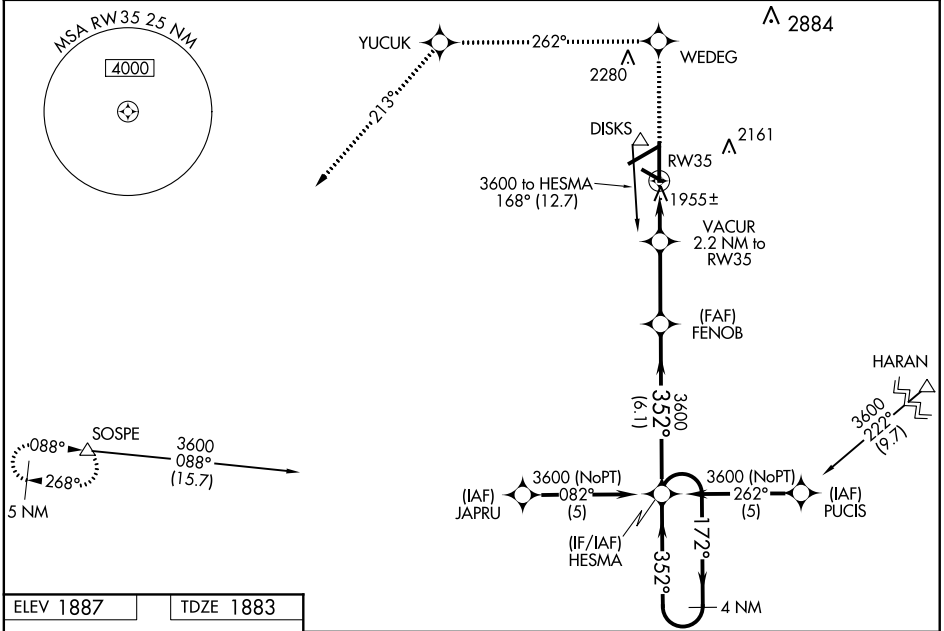
GREAT BEND MUNI (G.B.D)

WAAS CH 65710 W35A	APP CRS 352°	Rwy Idg 7851 TDZE 1883 Apt Elev 1887
--	------------------------	---

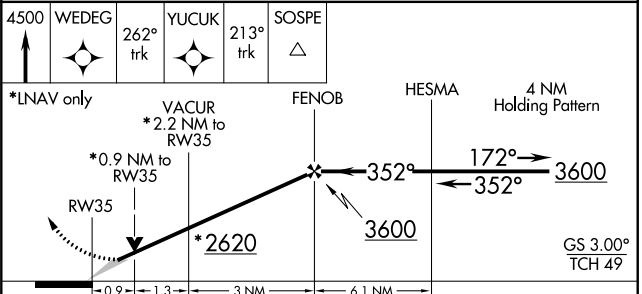
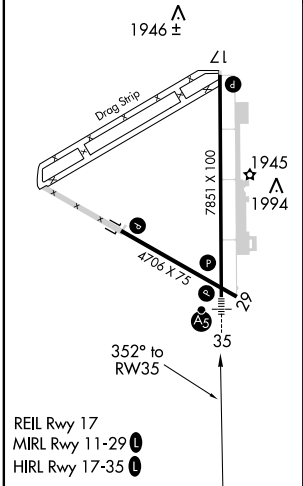
⚠ For uncompensated Baro-VNAV systems, LNAV/VNAV NA below -18°C (0.0°F) or above 45°C (113°F). DME/DME RNP-0.3 NA. When local altimeter setting not received, use Russell Muni altimeter setting and increase all DA 77 feet and all MDA 80 feet. Increase LPV and LNAV/VNAV all Cats, LNAV Cat C and circling Cat D visibility ¼ mile. For inoperative MALSRS increase LPV all Cats and LNAV Cat D visibility to ¼ mile. Baro-VNAV and VDP NA when using Russell Muni altimeter setting. Inoperative table does not apply to LNAV Cat D.

MALSRS
MISSED APPROACH: Climb to 4500 direct WEDEG and via 262° track to YUCUK then via 213° track to SOSPE and hold.

AWOS-3 119.275	KANSAS CITY CENTER 118.8 337.4	UNICOM 122.8 (CTAF) 0
--------------------------	--	--



ELEV 1887	TDZE 1883
-----------	-----------



CATEGORY	A	B	C	D
LPV DA		2171-½	288 (300-½)	
LNAV/VNAV DA		2222-¾	339 (400-¾)	
LNAV MDA	2300-1	2340-1	2340-1½	2500-2
CIRCLING	413 (500-1)	453 (500-1)	453 (500-1½)	613 (700-2)

NC-2, 07 FEB 2013 to 07 MAR 2013

NC-2, 07 FEB 2013 to 07 MAR 2013