

VORTAC GRI 112.0 Chan 57	APP CRS 313°	Rwy Idg 6608 TDZE 1844 Apt Elev 1847
---------------------------------------	------------------------	---

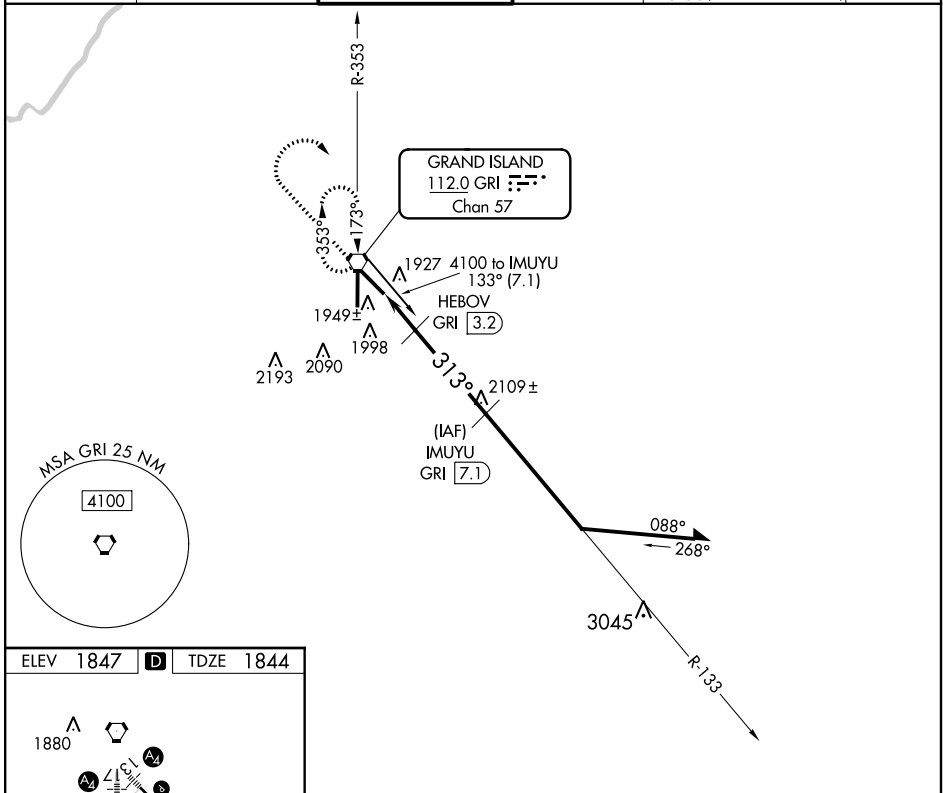
VOR/DME RWY 31

GRAND ISLAND/ CENTRAL NEBRASKA RGNL (GRI)

▼ If local altimeter setting not received, use Aurora altimeter setting and increase all MDAs 60 feet.
▲ VDP NA when using Aurora altimeter setting.

MISSED APPROACH: Climb to 2900 then climbing right turn to 3700 direct GRI VORTAC and hold.

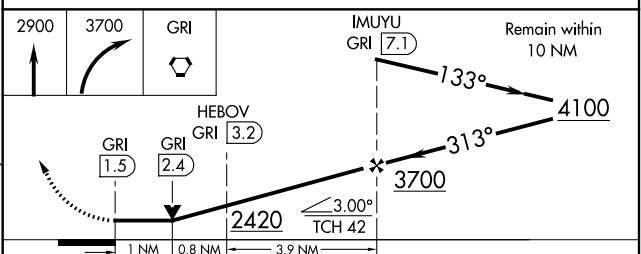
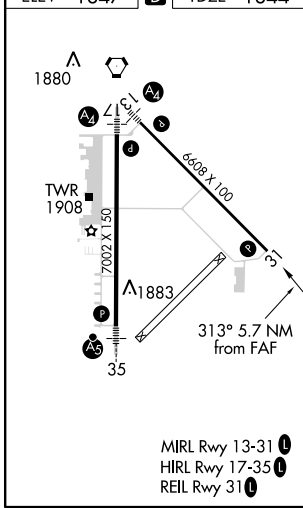
ATIS 127.4	MINNEAPOLIS CENTER 119.4 278.8	GRAND ISLAND TOWER * 118.2 (CTAF) 0 388.2	GND CON 121.9 388.2	CLNC DEL 121.9 126.05 (when tower closed)	UNICOM 122.95
----------------------	--	---	-------------------------------	--	-------------------------



NC-2, 07 FEB 2013 to 07 MAR 2013

NC-2, 07 FEB 2013 to 07 MAR 2013

ELEV 1847	D	TDZE 1844
-----------	----------	-----------



CATEGORY	A	B	C	D
S-31	2200-1	356 (400-1)	2200-1 1/4	2200-1 1/4 356 (400-1 1/4)
CIRCLING	2300-1	453 (500-1)	2300-1 1/2 453 (500-1 1/2)	2400-2 553 (600-2)