

GRAND ISLAND, NEBRASKA

AL-173 (FAA)

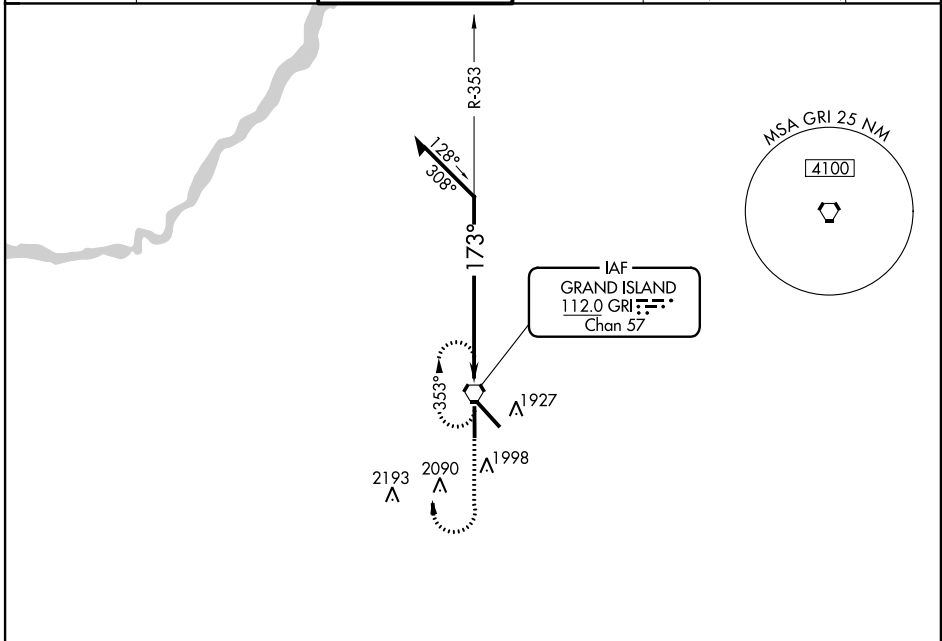
VORTAC GRI 112.0 Chan 57	APP CRS 173°	Rwy Idg TDZE 1844 Apt Elev 1847	7002 1844 1847
---------------------------------------	------------------------	---	---

VOR RWY 17

GRAND ISLAND/ CENTRAL NEBRASKA RGNL (GRI)

			MISSED APPROACH: Climb to 3600, then right turn direct GRI VORTAC and hold.		
--	--	--	---	--	--

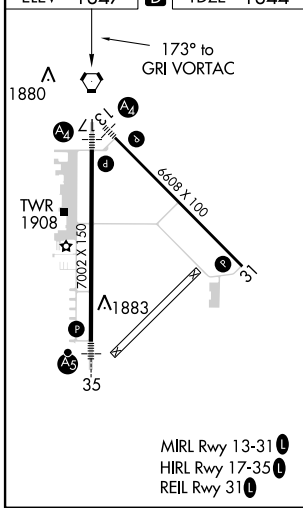
ATIS 127.4	MINNEAPOLIS CENTER 119.4 278.8	GRAND ISLAND TOWER * 118.2 (CTAF) 388.2	GND CON 121.9 388.2	CLNC DEL 121.9 <small>(when tower closed)</small>	UNICOM 122.95
----------------------	--	---	-------------------------------	--	-------------------------



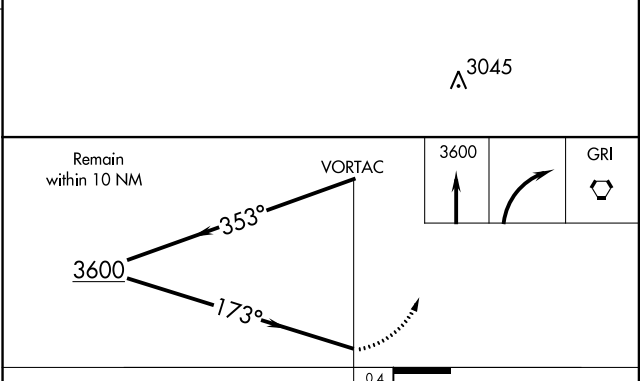
NC-2, 07 FEB 2013 to 07 MAR 2013

NC-2, 07 FEB 2013 to 07 MAR 2013

ELEV 1847	D	TDZE 1844
-----------	----------	-----------



MIRL Rwy 13-31
 HIRL Rwy 17-35
 REIL Rwy 31



CATEGORY	A	B	C	D
S-17	2300-3/4 456 (500-3/4)	2300-1/4 456 (500-1/4)	2300-1/2 456 (500-1/2)	2300-1/2 456 (500-1/2)
CIRCLING	2300-1 453 (500-1)	2300-1/2 453 (500-1/2)	2400-2 553 (600-2)	2400-2 553 (600-2)

GRAND ISLAND, NEBRASKA
Amdt 24 12320

GRAND ISLAND/ CENTRAL NEBRASKA RGNL (GRI)
40°58'N-98°19'W
VOR RWY 17