

RNAV (GPS) RWY 35

GRAND ISLAND/CENTRAL NEBRASKA RGNL (GRI)

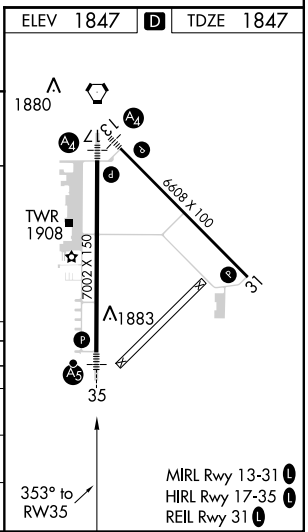
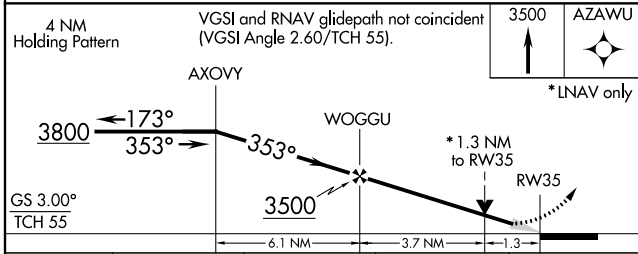
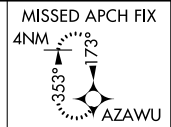
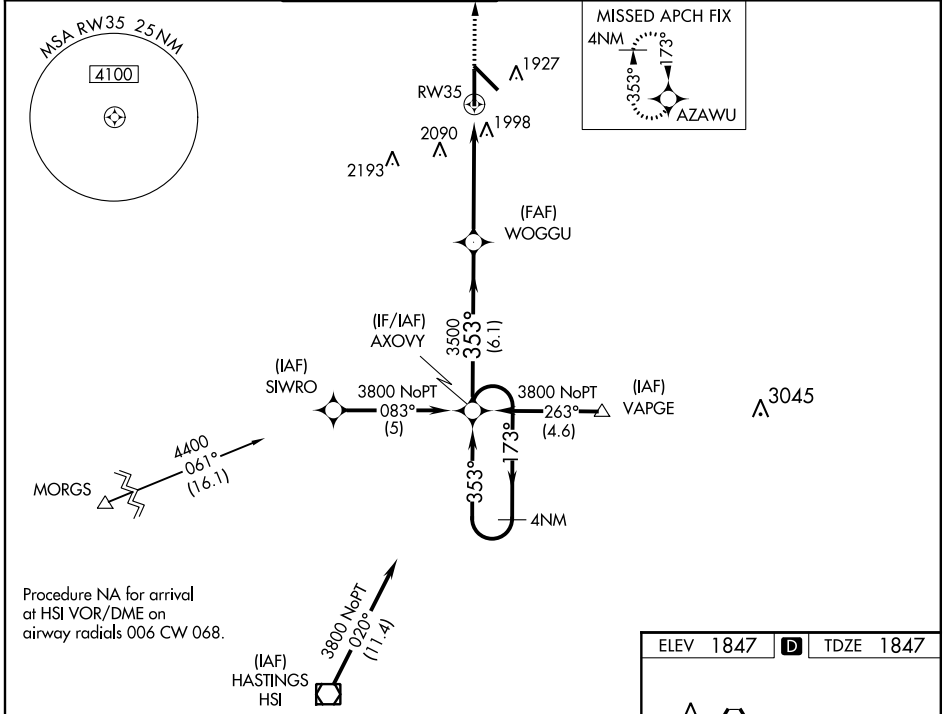
WAAS CH 86799 W35A	APP CRS 353°	Rwy Idg 7002 TDZE 1847 Apt Elev 1847
--	------------------------	---

▼ DME/DME RNP-0.3 NA. Baro-VNAV NA below -18°C (0°F). If local altimeter setting not received, use Aurora altimeter setting and increase all DAs/MDAs 60 feet.
▲ Baro-VNAV and VDP NA when using Aurora altimeter setting. For inoperative MALSR increase LPV visibility to RVR 4000 all Cats.



MISSED APPROACH:
Climb to 3500 direct AZAWU and hold.

ATIS 127.4	MINNEAPOLIS CENTER 119.4 278.8	GRAND ISLAND TOWER ★ 118.2 (CTAF) 388.2	GND CON 121.9 388.2	CLNC DEL 121.9 (when tower closed)	UNICOM 122.95
----------------------	--	---	-------------------------------	---	-------------------------



CATEGORY	A	B	C	D
LPV DA	2097/24 250 (300-½)			
LNNAV/VNAV DA	2283/50 436 (500-1)			
LNNAV MDA	2260/24	413 (500-½)	2260/40 413 (500-¾)	2260/50 413 (500-1)
CIRCLING	2300-1½ 453 (500-1½)		2400-2 553 (600-2)	

NC-2, 07 FEB 2013 to 07 MAR 2013

NC-2, 07 FEB 2013 to 07 MAR 2013