

# RNAV (GPS) RWY 31

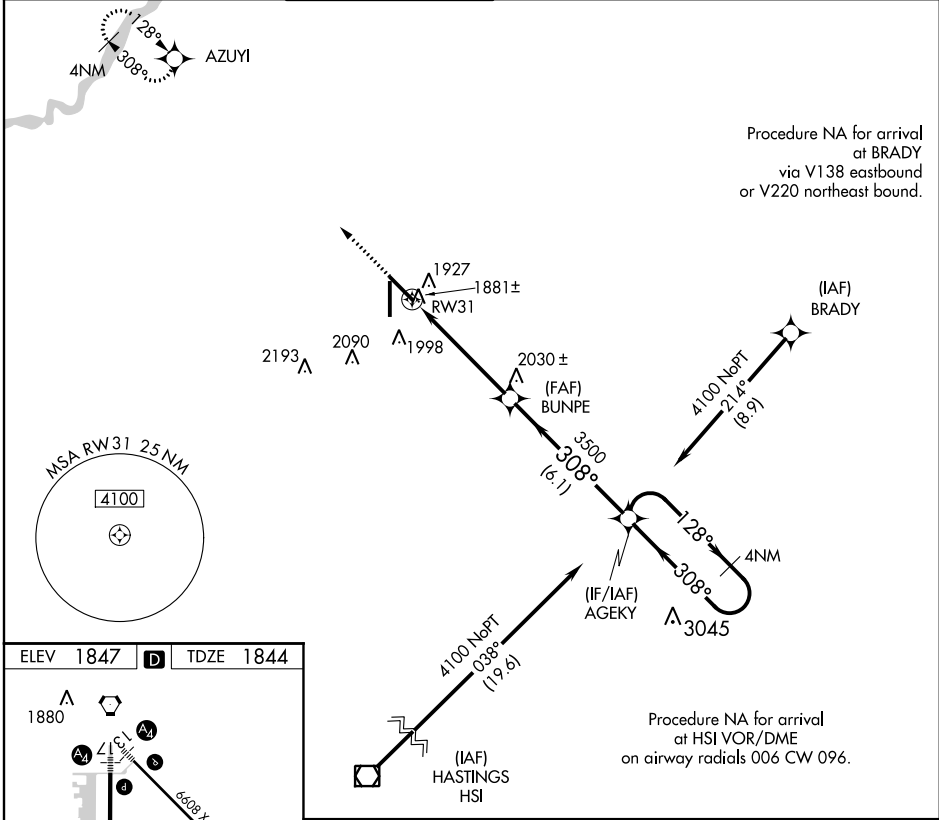
GRAND ISLAND/CENTRAL NEBRASKA RGNL (GRI)

APP CRS <b>308°</b>	Rwy Idg <b>6608</b>
	TDZE <b>1844</b>
	Apt Elev <b>1847</b>

**▽** DME/DME RNP-0.3 NA. If local altimeter setting not received, use Aurora altimeter setting and increase all MDAs 60 feet. **△** VDP NA when using Aurora altimeter setting.

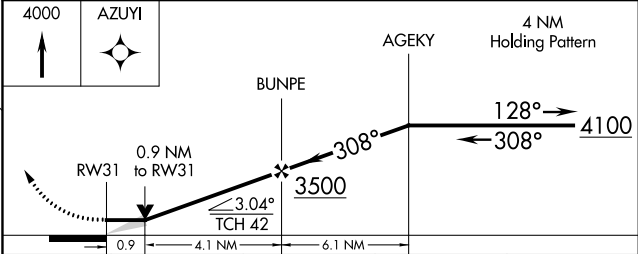
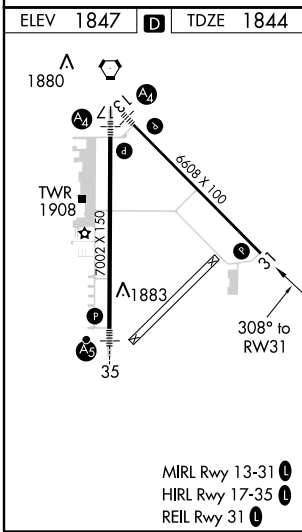
MISSED APPROACH: Climb to 4000 direct AZUYI and hold.

ATIS <b>127.4</b>	MINNEAPOLIS CENTER <b>119.4 278.8</b>	GRAND ISLAND TOWER ★ <b>118.2 (CTAF) 0 388.2</b>	GND CON <b>121.9 388.2</b>	CLNC DEL <b>121.9</b> (when tower closed)	UNICOM <b>122.95</b>
----------------------	--	---	-------------------------------	---	-------------------------



Procedure NA for arrival at BRADY via V138 eastbound or V220 northeast bound.

Procedure NA for arrival at HSI VOR/DME on airway radials 006 CW 096.



CATEGORY	A	B	C	D
LNAV MDA	2180-1 336 (400-1)			
CIRCLING	2300-1	453 (500-1)	2300-1½ 453 (500-1½)	2400-2 553 (600-2)

NC-2, 07 FEB 2013 to 07 MAR 2013

NC-2, 07 FEB 2013 to 07 MAR 2013