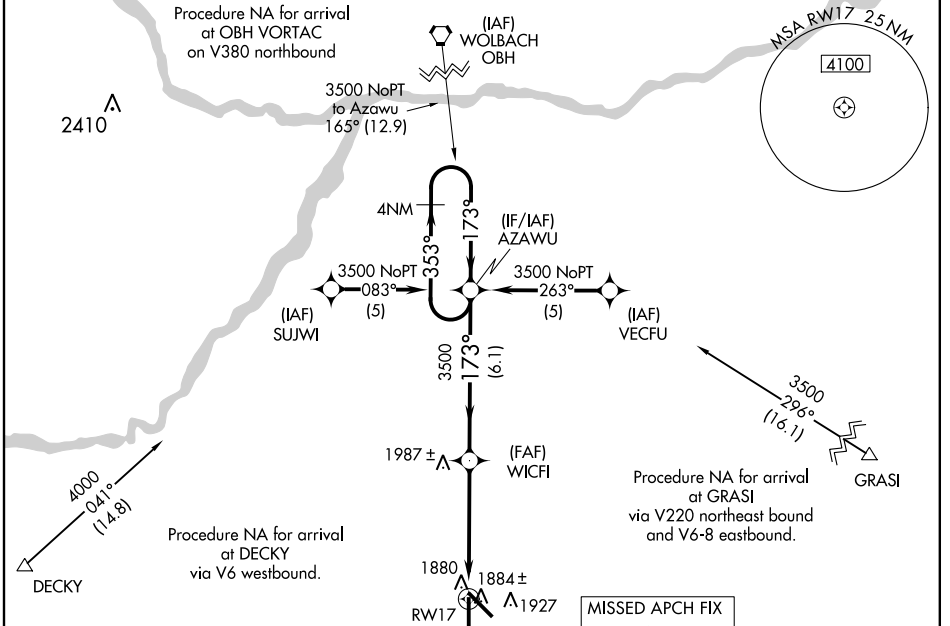


RNAV (GPS) RWY 17

GRAND ISLAND/ CENTRAL NEBRASKA RGNL (GRI)

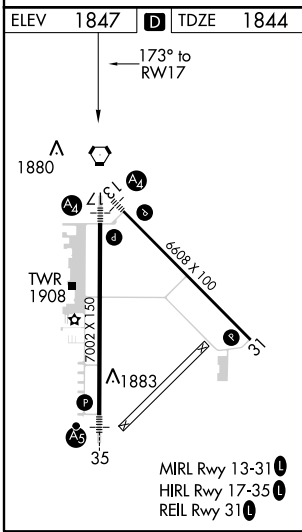
WAAS CH 60999 W17A	APP CRS 173°	Rwy Idg 7002 TDZE 1844 Apt Elev 1847
--	------------------------	---

▽ △	DME/DME RNP-0.3 NA. Baro-VNAV NA below -18°C (0°F). If local altimeter setting not received, use Aurora altimeter setting and increase all DAs/MDAs 60 feet. Baro-VNAV and VDP NA when using Aurora altimeter setting. Inoperative table does not apply to LPV.		MALS 	MISSED APPROACH: Climb to 3800 direct AXOVY and hold.	
ATIS 127.4	MINNEAPOLIS CENTER 119.4 278.8	GRAND ISLAND TOWER* 118.2 (CTAF) 0 388.2	GND CON 121.9 388.2	CLNC DEL 121.9 (when tower closed)	UNICOM 122.95



NC-2, 07 FEB 2013 to 07 MAR 2013

NC-2, 07 FEB 2013 to 07 MAR 2013



3800	AXOVY	VGS1 and RNAV glidepath not coincident (VGS1 Angle 3.00/TCH 38).		4 NM Holding Pattern
*LNAV only				
WICFI		AZAWU		
RWY 17		3500		GS 3.00° TCH 50
0.9		4.1 NM		6.1 NM
CATEGORY	A	B	C	D
LPV DA	2094-¾ 250 (300-¾)			
LNAV/VNAV DA	2138-¾ 294 (300-¾)		2138-1 294 (300-1)	
LNAV MDA	2160-¾ 316 (400-¾)		2160-1 316 (400-1)	
CIRCLING	2300-1 453 (500-1)	2300-1½ 453 (500-1½)		2400-2 553 (600-2)