

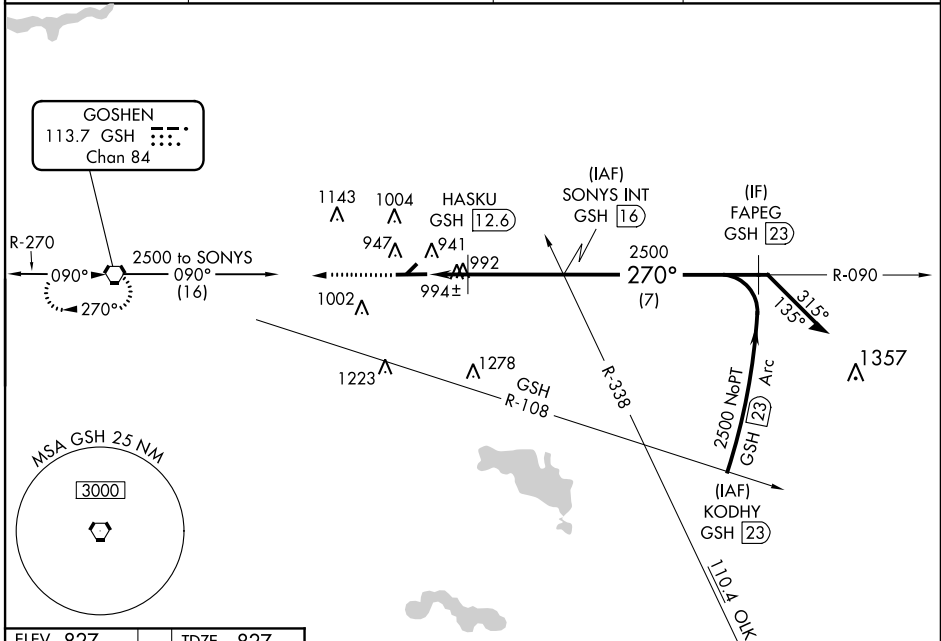
VORTAC GSH <b>113.7</b> Chan <b>84</b>	APP CRS <b>270°</b>	Rwy Idg TDZE Apt Elev	<b>6050</b> <b>827</b> <b>827</b>
--	------------------------	-----------------------------	---

**VOR RWY 27**  
GOSHEN MUNI (GSH)

Visibility reduction by helicopters NA. When local altimeter setting not received, use Warsaw Muni altimeter setting and increase all MDAs 40 feet and increase Hasku Fix Minimums S-27 Cats C/D visibility ¼ mile. Descent angle NA when using Warsaw Muni altimeter setting.

MISSED APPROACH:  
Climb to 2500 direct GSH VORTAC and hold.

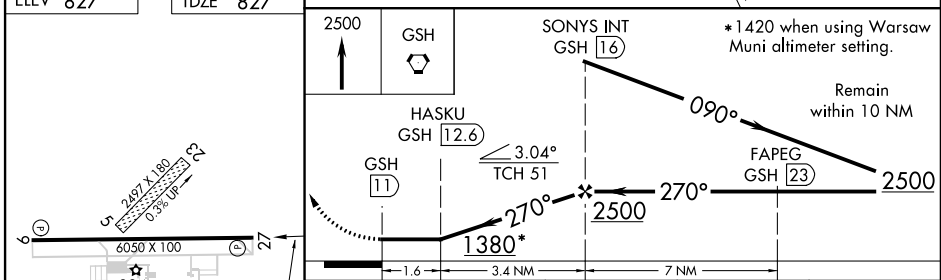
ASOS <b>121.45</b>	SOUTH BEND APP CON * <b>132.05 257.8</b>	CLNC DEL <b>125.25</b>	UNICOM <b>123.05 (CTAF) 1</b>
-----------------------	---	---------------------------	----------------------------------



EC-2, 07 FEB 2013 to 07 MAR 2013

EC-2, 07 FEB 2013 to 07 MAR 2013

ELEV 827	TDZE 827
----------	----------



CATEGORY	A	B	C	D
S-27	1380-1	553 (600-1)	1380-1½ 553 (600-1½)	1380-1¾ 553 (600-1¾)
CIRCLING	1380-1	553 (600-1)	1380-1½ 553 (600-1½)	1380-2 553 (600-2)
HASKU FIX MINIMUMS				
S-27	1300-1	473 (500-1)	1300-1¼ 473 (500-1¼)	1300-1½ 473 (500-1½)
CIRCLING	1300-1	473 (500-1)	1300-1½ 473 (500-1½)	1380-2 553 (600-2)

FAF to MAP 5 NM					
Knots	60	90	120	150	180
Min:Sec	5:00	3:20	2:30	2:00	1:40

GOSHEN, INDIANA  
Amdt 7A 03JUN10

41°32'N-85°48'W

GOSHEN MUNI (GSH)  
**VOR RWY 27**