

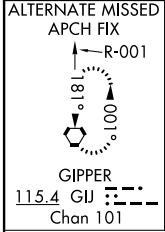
**ILS or LOC RWY 27**  
GOSHEN MUNI (GSH)

LOC I-GSH <b>108.3</b>	APP CRS <b>273°</b>	Rwy Idg <b>6050</b>
		TDZE <b>827</b>
		Apt Elev <b>827</b>

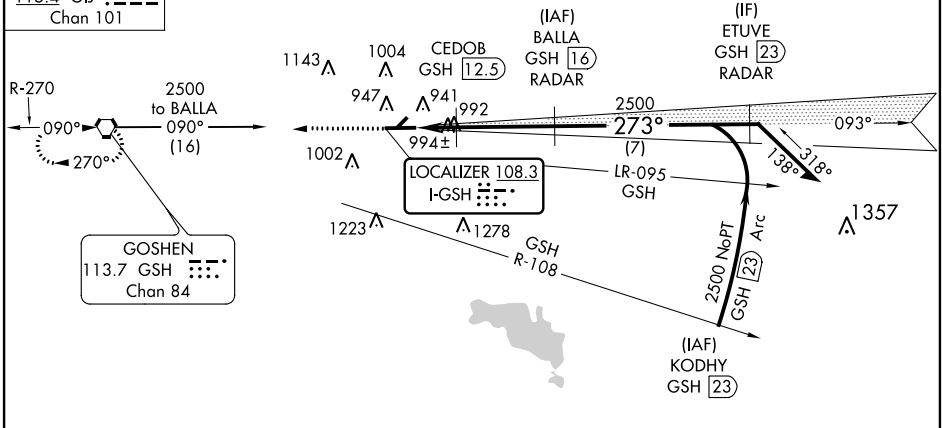
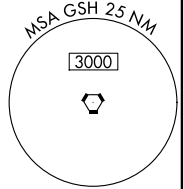
**▼** DME or RADAR Required. Visibility reduction by helicopters NA.  
**▲ NA** When local altimeter setting not received, use Warsaw Muni altimeter setting and increase all DAs/MDAs 40 feet and increase Cedob Fix Minimums S-LOC 27 Cats C/D visibility ¼ mile.

MISSED APPROACH: Climb to 2500 direct GSH VORTAC and hold.

ASOS <b>121.45</b>	SOUTH BEND APP CON ★ <b>132.05 257.8</b>	CLNC DEL <b>125.25</b>	UNICOM <b>123.05 (CTAF) 0</b>
-----------------------	---	---------------------------	----------------------------------

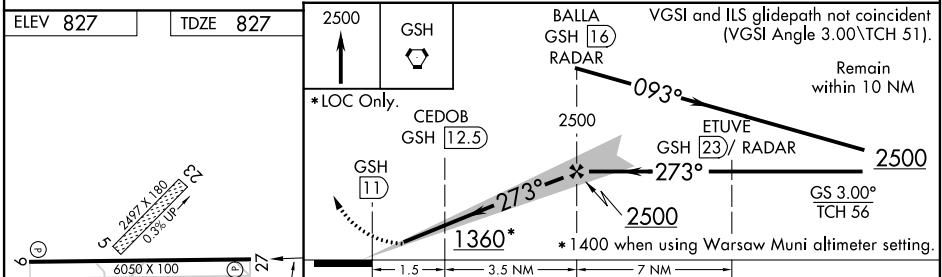


**DME or RADAR REQUIRED**



EC-2, 07 FEB 2013 to 07 MAR 2013

EC-2, 07 FEB 2013 to 07 MAR 2013



ELEV 827	TDZE 827	2500 GSH	BALLA GSH 16 RADAR	VGSi and ILS glidepath not coincident (VGSi Angle 3.00° TCH 51). Remain within 10 NM
		*LOC Only.	CEDOB GSH 12.5	ETUVE GSH 23/RADAR
		1360*	2500	2500
		1.5	3.5 NM	7 NM
CATEGORY	A	B	C	D
S-ILS 27	1027- <sup>3</sup> / <sub>4</sub> 200 (200- <sup>3</sup> / <sub>4</sub> )			
S-LOC 27	1360-1	533 (600-1)	1360-1½ 533 (600-1½)	1360-1¾ 533 (600-1¾)
CIRCLING	1360-1	533 (600-1)	1360-1½ 533 (600-1½)	1380-2 553 (600-2)
CEDOB FIX MINIMUMS				
S-LOC 27	1300-1	473 (500-1)	1300-1¼ 473 (500-1¼)	1300-1½ 473 (500-1½)
CIRCLING	1300-1	473 (500-1)	1300-1½ 473 (500-1½)	1380-2 553 (600-2)

HIRL Rwy 9-27  
REIL Rwys 9 and 27

FAF to MAP 5 NM					
Knots	60	90	120	150	180
Min:Sec	5:00	3:20	2:30	2:00	1:40

**GOSHEN MUNI (GSH)**  
**ILS or LOC RWY 27**