

GOLDSBORO, NORTH CAROLINA

TACAN RWY 8

TACAN GSB Chan 112	APCH CRS 081°	Rwy ldg 11,760 THRE 72 Arprt Elev 109
------------------------------	-------------------------	--

AL-169 [USAF]

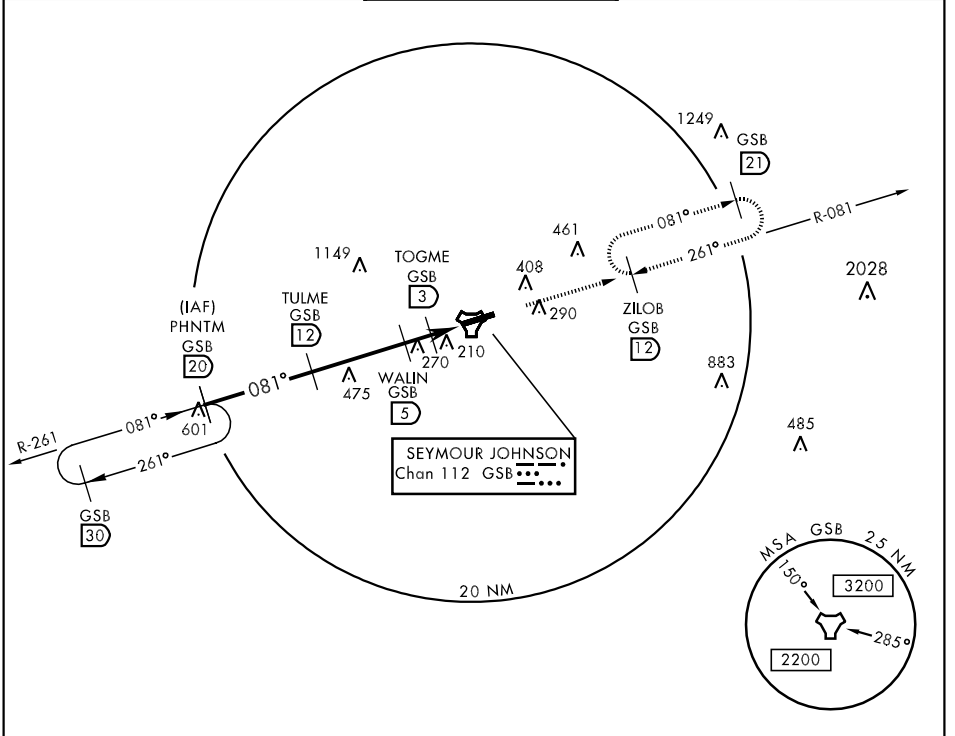
SEYMOUR JOHNSON AFB (KGSB)

▼ * When ALS inop, increase CAT AB RVR to 55 and vis to 1 mile, CAT CDE vis to 1 3/8 miles.
** Circling N of Rwy 8-26 not authorized.



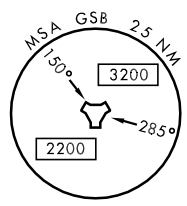
MISSED APPROACH: Climb to 2300 via GSB R-081 to ZILOB and hold.

ATIS ★ 317.625	SEYMOUR JOHNSON APP CON 258°-110° 123.7 290.9 111°-257° 119.7 273.6	SEYMOUR JOHNSON TOWER ★ 126.25 370.875	GND CON 138.1 275.8	CLNC DEL 128.025 270.8
--------------------------	---	--	-------------------------------	----------------------------------

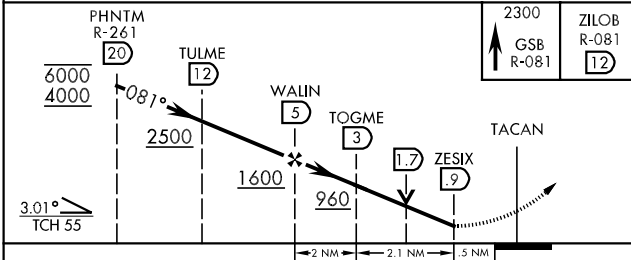


SE-2, 07 FEB 2013 to 07 MAR 2013

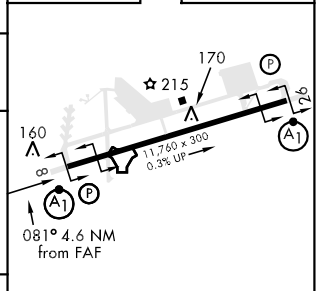
SE-2, 07 FEB 2013 to 07 MAR 2013



EMERG SAFE ALT 100 NM 3700



ELEV 109	THRE 72
----------	---------



CATEGORY	A	B	C	D	E
S-8*	560/24 488 (500-1/2)		560/50 488 (500-1)		
CIRCLING**	660-1 551 (600-1)		660-1 1/2 551 (600-1 1/2)	660-2 551 (600-2)	760-2 1/4 651 (700-2 1/4)

HIRL Rwy 8-26					
FAF to MAP 4.1 NM					
Knots	60	90	120	150	180
Min. Sec	4:06	2:44	2:03	1:38	1:22

GOLDSBORO, NORTH CAROLINA

35° 20'N-77° 58'W

SEYMOUR JOHNSON AFB (KGSB)

Amdt 3 09FEB12

TACAN RWY 8