

GOLDSBORO, NORTH CAROLINA

TACAN RWY 26

TACAN GSB Chan 112	APCH CRS 261°	Rwy ldg 11,760 THRE 109 Arpt Elev 109
--------------------	---------------	---

AL-169 [USAF]

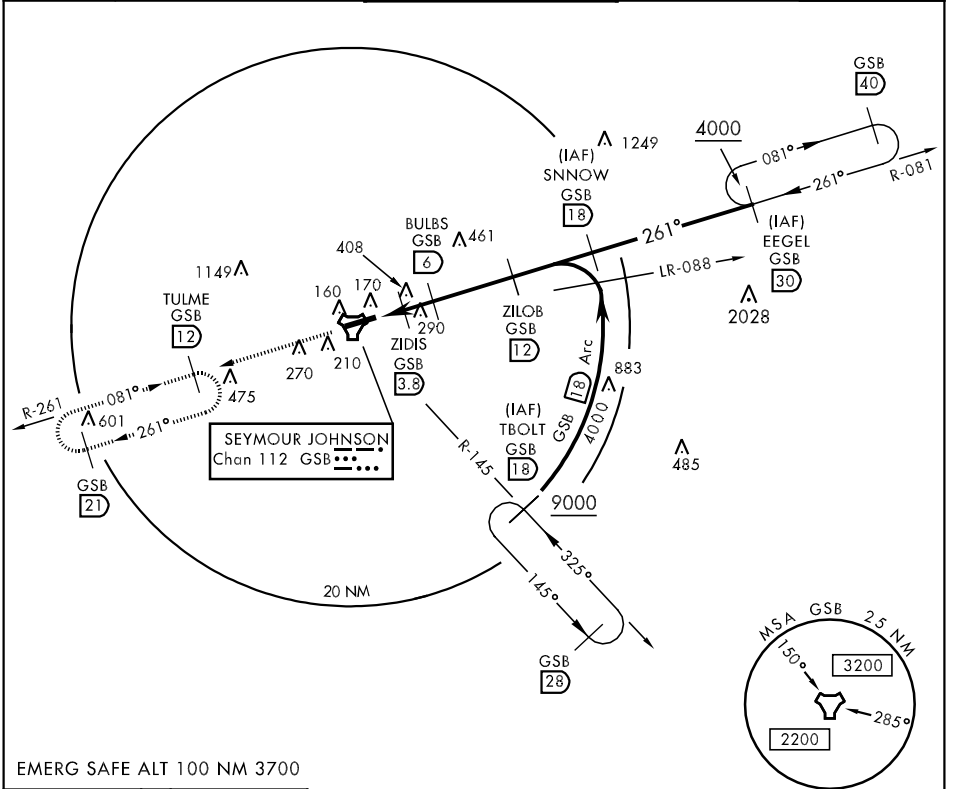
SEYMOUR JOHNSON AFB (KGSB)

▼ * When ALS inop, increase CAT AB RVR to 55 and vis to 1 mile, CAT CDE vis to 1 3/8 miles.
 ** Circling N of Rwy 8-26 not authorized.



MISSED APPROACH: Climb to 2200 via GSB R-261 to TULME and hold.

ATIS ★ 317.625	SEYMOUR JOHNSON APP CON 258°-110° 123.7 290.9 111°-257° 119.7 273.6	SEYMOUR JOHNSON TOWER ★ 126.25 370.875	GND CON 138.1 275.8	CLNC DEL 128.025 270.8
----------------	--	--	---------------------	------------------------

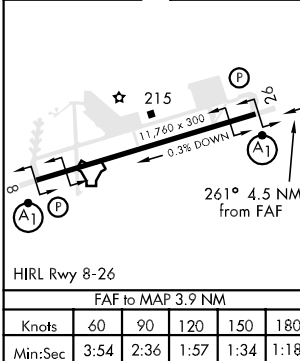


SE-2, 07 FEB 2013 to 07 MAR 2013

SE-2, 07 FEB 2013 to 07 MAR 2013

EMERG SAFE ALT 100 NM 3700

ELEV 109	THRE 109
----------	----------



	2200 GSB R-261	TULME R-261 12	ZILOB 12	BULBS 6	SNNOW R-081 18	EEGL R-081 30
	TACAN	COMOZ 2.1	ZIDIS 3.8	1600	2500	4000
	2.99° TCH 55	.6 NM	1.7 NM	2.2 NM		
	215	210	210	210	210	210
HIRL Rwy 8-26						
FAF to MAP 3.9 NM						
Knots	60	90	120	150	180	
Min:Sec	3:54	2:36	1:57	1:34	1:18	
CATEGORY	A	B	C	D	E	
S-26*	560/24	451 (500-1/2)	560/50	451 (500-3/4)		
CIRCLING**	660-1	551 (600-1)	660-1 1/2 551 (600-1 1/2)	660-2 551 (600-2)	760-2 1/4 651 (700-2 1/4)	

GOLDSBORO, NORTH CAROLINA

35° 20' N-77° 58' W

SEYMOUR JOHNSON AFB (KGSB)

Amdt 3 05APR12

TACAN RWY 26