

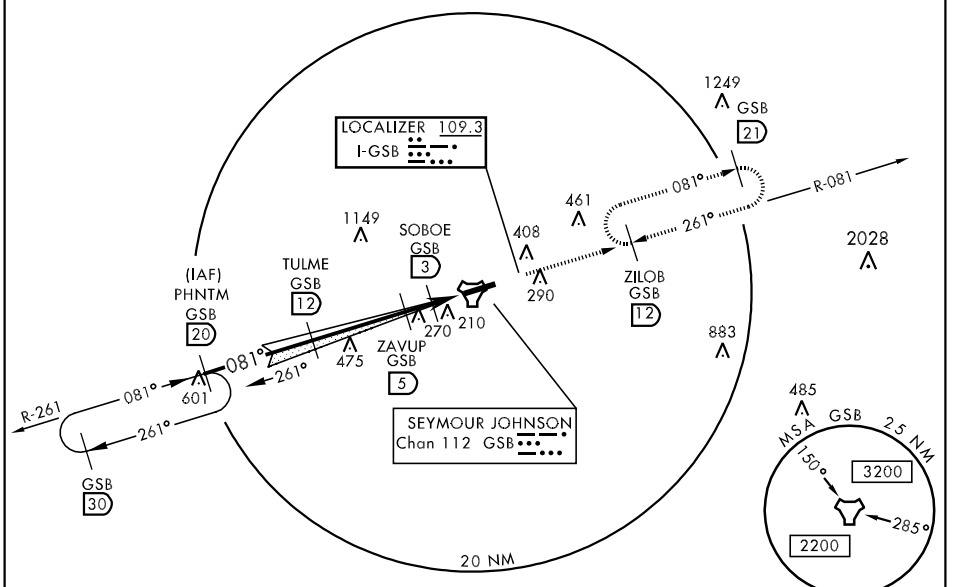
GOLDSBORO, NORTH CAROLINA

ILS or LOC/DME RWY 8

LOC I-GSB 109.3	APCH CRS 081°	Rwy Idg 11,760 THRE Arpt Elev 109	AL-169 [USAF]	SEYMOUR JOHNSON AFB (KGSB)
▼ * When ALS inop, increase RVR to 40 and vis to 3/8 mile. ** When ALS inop, increase CAT AB RVR to 55 and vis to 1 mile, CAT CDE vis to 1 1/8 miles.			ALSF-1 	MISSED APPROACH: Climb to 2300 via GSB R-081 to ZILOB and hold.

ATIS ★ 317.625	SEYMOUR JOHNSON APP CON 258°-110° 123.7 290.9 111°-257° 119.7 273.6	SEYMOUR JOHNSON TOWER ★ 126.25 370.875	GND CON 138.1 275.8	CLNC DEL 128.025 270.8
--------------------------	---	--	-------------------------------	----------------------------------

*** Circling N of Rwy 8-26 not authorized.



SE-2, 07 FEB 2013 to 07 MAR 2013

SE-2, 07 FEB 2013 to 07 MAR 2013

EMERG SAFE ALT 100 NM 3700

ELEV	109	THRE	72
------	-----	------	----

VGSI and descent angles not coincident.

↑ LOC ONLY

ZILOB R-081 12

PHNTM R-261 20

TULME 12

ZAVUP 5

SOBOE 3

JAVIX 9

TACAN

GS 3.00° TCH 48

6000 4000

2500

1600

960

2 NM ← 2.1 NM → .5

2300 GSB R-081

ZILOB R-081 12

170

160

11,760 x 300

0.3% UP

081° 4.6 NM from FAF

CATEGORY	A	B	C	D	E
S-ILS 8*	272/24		200	(200-1/2)	
S-LOC 8**	560/24	488 (500-1/2)	560/50		488 (500-1)
CIRCLING***	660-1	551 (600-1)	660-1 1/2	660-2	760-2 1/4
			551 (600-1 1/2)	551 (600-2)	651 (700-2 1/4)

HIRL Rwy 8-26

FAF to MAP 4.1 NM					
Knots	60	90	120	150	180
Min. Sec	4:06	2:44	2:03	1:38	1:22

GOLDSBORO, NORTH CAROLINA 35° 20' N-77° 58' W SEYMOUR JOHNSON AFB (KGSB)

Amdt 4 05APR12

ILS or LOC/DME RWY 8