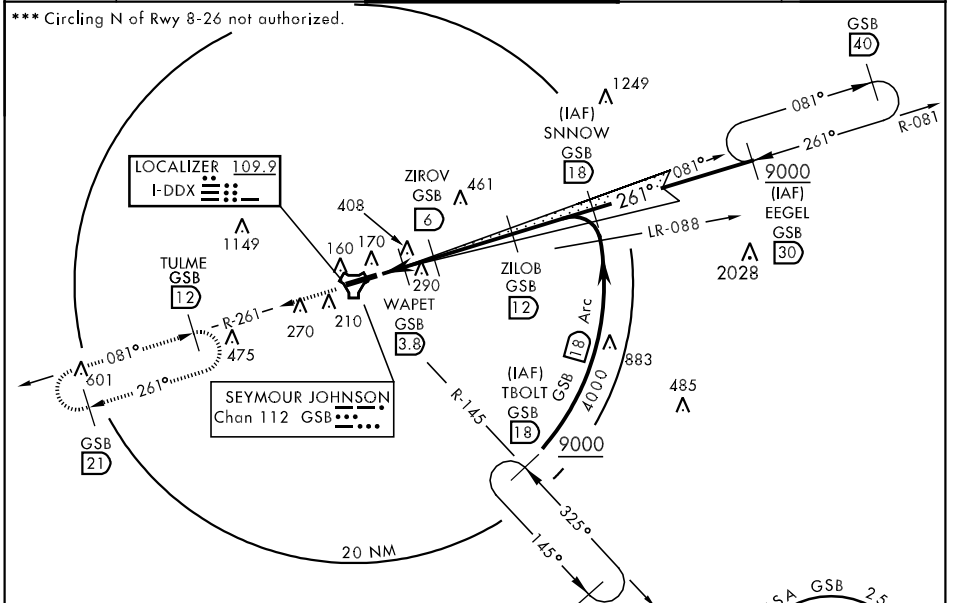


GOLDSBORO, NORTH CAROLINA

ILS or LOC/DME RWY 26

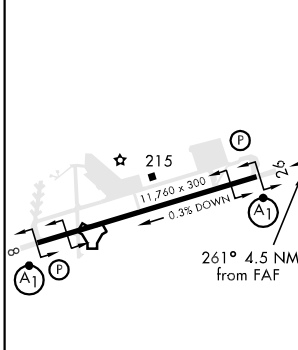
LOC I-DDX 109.9	APCH CRS 261°	Rwy Idg THRE 11,760 109 Arpt Elev 109	AL-169 [USAF]	SEYMOUR JOHNSON AFB (KGSB)
* When ALS inop, increase RVR to 40 and vis to 3/4 mile. ** When ALS inop, increase CAT AB RVR to 55 and vis to 1 mile, CAT CDE RVR to 60 and vis to 1 1/8 miles.			ALSF-1 	MISSED APPROACH: Climb to 2200 via GSB R-261 to TULME and hold.

ATIS ★ 317.625	SEYMOUR JOHNSON APP CON 258°-110° 123.7 290.9 111°-257° 119.7 273.6	SEYMOUR JOHNSON TOWER ★ 126.25 370.875	GND CON 138.1 275.8	CLNC DEL 128.025 270.8
--------------------------	---	--	-------------------------------	----------------------------------



EMERG SAFE ALT 100 NM 3700

ELEV 109	THRE 109
----------	----------



2200 GSB R-261	TULME R-261 12	VGSI and descent angles not coincident. ↑ LOC ONLY	SNNOW R-081 18	EEGEL R-081 30	
TACAN GS 3.00° TCH 54 TIGTE 2.1 WAPET 3.8 ZIROV 6 ZILOB 12 880 1600 2500 4000 9000 .6 NM → 1.7 NM → 2.2 NM					
CATEGORY	A	B	C	D	E
S-ILS 26*	309/24		200	(200-1/2)	
S-LOC 26**	500/24	391 (400-1/2)	500/35	391 (400-3/4)	
CIRCLING ***	660-1	551 (600-1)	660-1 1/2 551 (600-1 1/2)	660-2 551 (600-2)	760-2 1/4 651 (700-2 1/4)

GOLDSBORO, NORTH CAROLINA 35° 20'N-77° 58'W SEYMOUR JOHNSON AFB (KGSB)
Amdt 4 20SEP12

ILS or LOC/DME RWY 26

SE-2, 07 FEB 2013 to 07 MAR 2013

SE-2, 07 FEB 2013 to 07 MAR 2013