

GOLDSBORO, NORTH CAROLINA

# HI-TACAN RWY 8

TACAN GSB Chan 112	APCH CRS 081°	Rwy ldg THRE 11,760 Arpt Elev 109
-----------------------	------------------	---

JAL-169 [USAF]

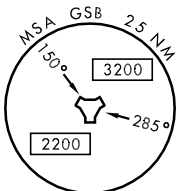
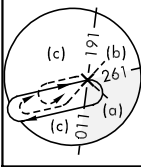
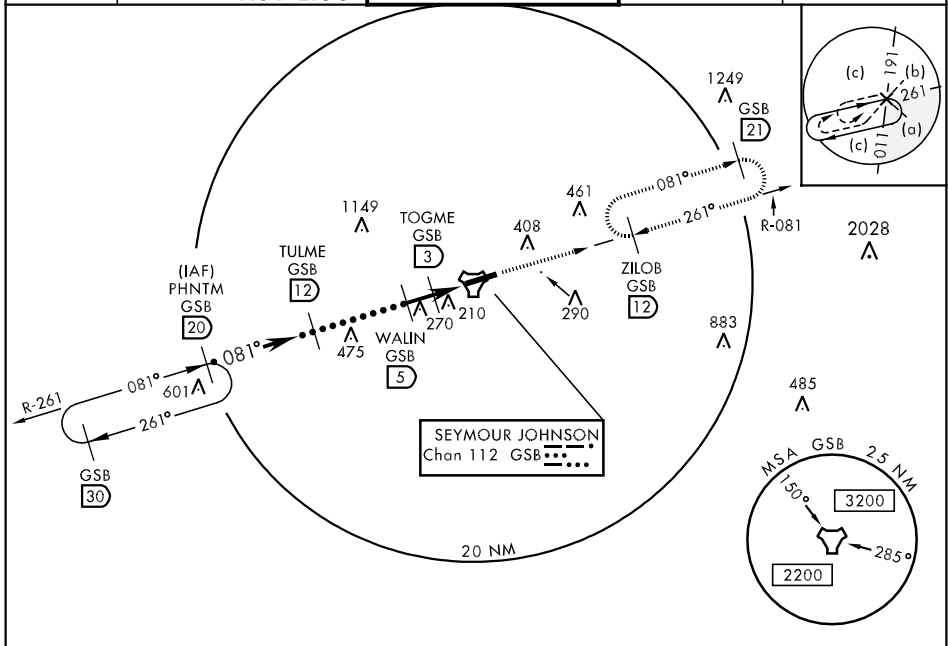
SEYMOUR JOHNSON AFB (KGSB)

\* When ALS inop, increase CAT AB RVR to 55 and vis to 1 mile, CAT CDE vis to 1 3/4 miles.  
 \*\* Circling N of Rwy 8-26 not authorized.



MISSED APPROACH: Climb to 2300 via GSB TACAN R-081 to ZILOB and hold.

ATIS ★ 317.625	SEYMOUR JOHNSON APP CON 258°-110° 123.7 290.9 111°-257° 119.7 273.6	SEYMOUR JOHNSON TOWER ★ 126.25 370.875	GND CON 138.1 275.8	CLNC DEL 128.025 270.8
-------------------	---	---	------------------------	---------------------------

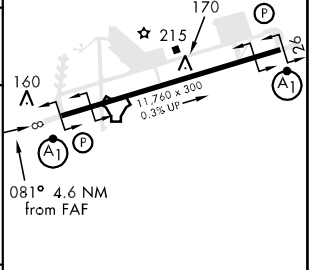
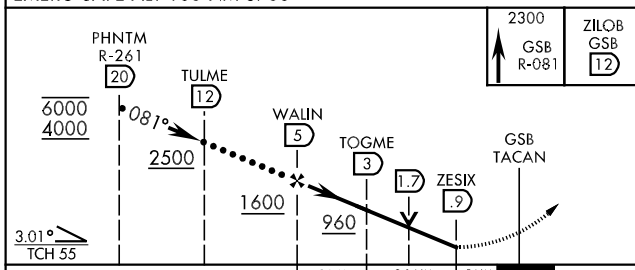


SE-2, 07 FEB 2013 to 07 MAR 2013

SE-2, 07 FEB 2013 to 07 MAR 2013

ELEV 109	THRE 72
----------	---------

EMERG SAFE ALT 100 NM 3700



CATEGORY	A	B	C	D	E
S-8 *	560/24 488 (500-1/2)		560/50 488 (500-1)		
CIRCLING **	660-1 551 (600-1)		660-1 1/2 551 (600-1 1/2)	660-2 551 (600-2)	760-2 1/4 651 (700-2 1/4)

HIRL Rwy 8-26					
FAF to MAP 4.1 NM					
Knots	120	140	160	180	200
Min:Sec	2:03	1:45	1:32	1:22	1:14

GOLDSBORO, NORTH CAROLINA

35° 20' N-77° 58' W

SEYMOUR JOHNSON AFB (KGSB)

Amdt 3 26JUL12

# HI-TACAN RWY 8