

HI-TACAN RWY 26

TACAN GSB Chan 112	APCH CRS 261°	Rwy Idg THRE 109 Arprt Elev 109	JAL-169 [USAF]	SEYMOUR JOHNSON AFB (KGSB)
------------------------------	-------------------------	---	----------------	----------------------------

▼ * When ALS inop, increase CAT AB RVR to 55 and vis to 1 mile, CAT CDE vis to 1 3/8 miles.
 ** Circling N of Rwy 8-26 not authorized.

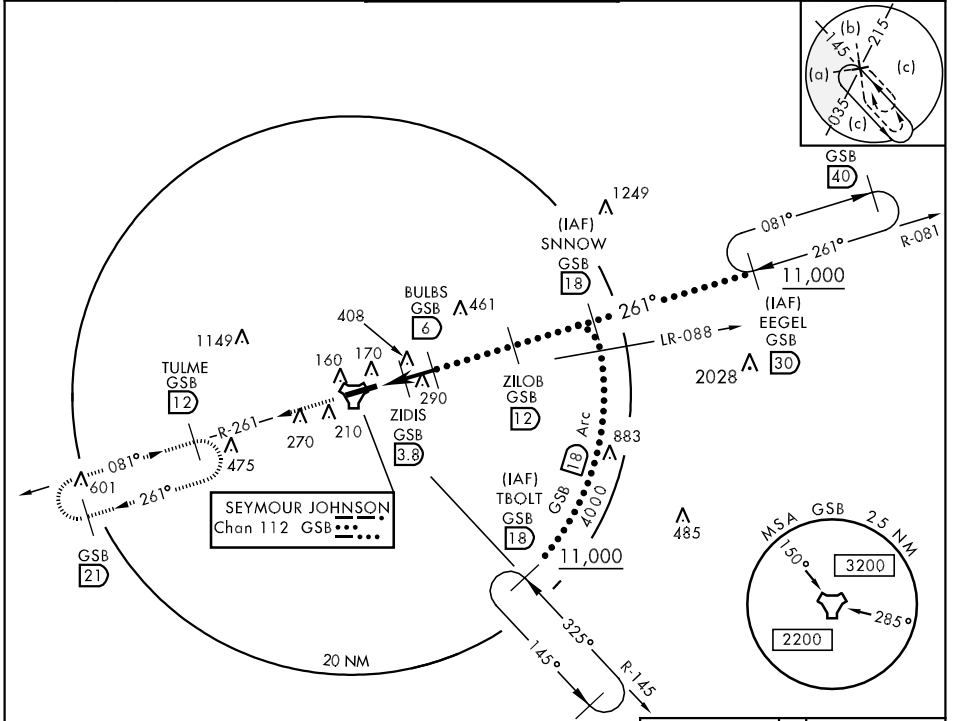


MISSED APPROACH: Climb to 2200 via GSB R-261 to TULME and hold.

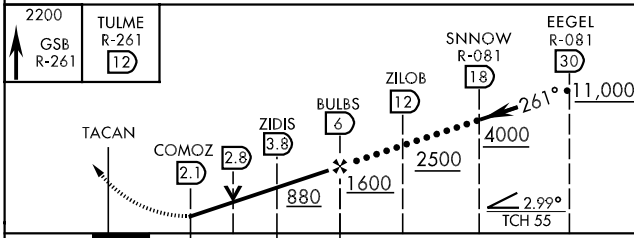
ATIS ★ 317.625	SEYMOUR JOHNSON APP CON 258°-110° 123.7 290.9 111°-257° 119.7 273.6	SEYMOUR JOHNSON TOWER ★ 126.25 370.875	GND CON 138.1 275.8	CLNC DEL 128.025 270.8
--------------------------	---	--	-------------------------------	----------------------------------

SE-2, 07 FEB 2013 to 07 MAR 2013

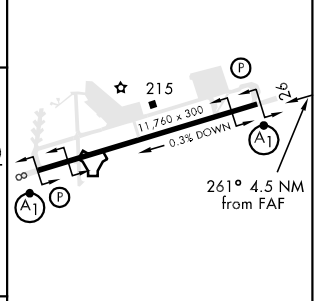
SE-2, 07 FEB 2013 to 07 MAR 2013



EMERG SAFE ALT 100 NM 3700



ELEV 109	THRE 109
----------	----------



CATEGORY	A	B	C	D	E
S-26*	560/24 451 (500-1/2)		560/50 451 (500-7/8)		
CIRCLING**	660-1 551 (600-1)		660-1 1/2 551 (600-1 1/2)	660-2 551 (600-2)	760-2 1/4 651 (700-2 1/4)

HIRL Rwy 8-26					
FAF to MAP 3.9 NM					
Knots	120	140	160	180	200
Min:Sec	1:57	1:40	1:28	1:18	1:10

HI-TACAN RWY 26