

GOLDSBORO, NORTH CAROLINA

# HI-ILS or LOC/DME RWY 8

LOC I- <b>GSB</b> <b>109.3</b>	APCH CRS <b>081°</b>	Rwy Idg THRE <b>11,760</b> 72 Arpt Elev <b>109</b>	JAL-169 [USAF]	SEYMOUR JOHNSON AFB (KGSB)
-----------------------------------	-------------------------	---	----------------	----------------------------

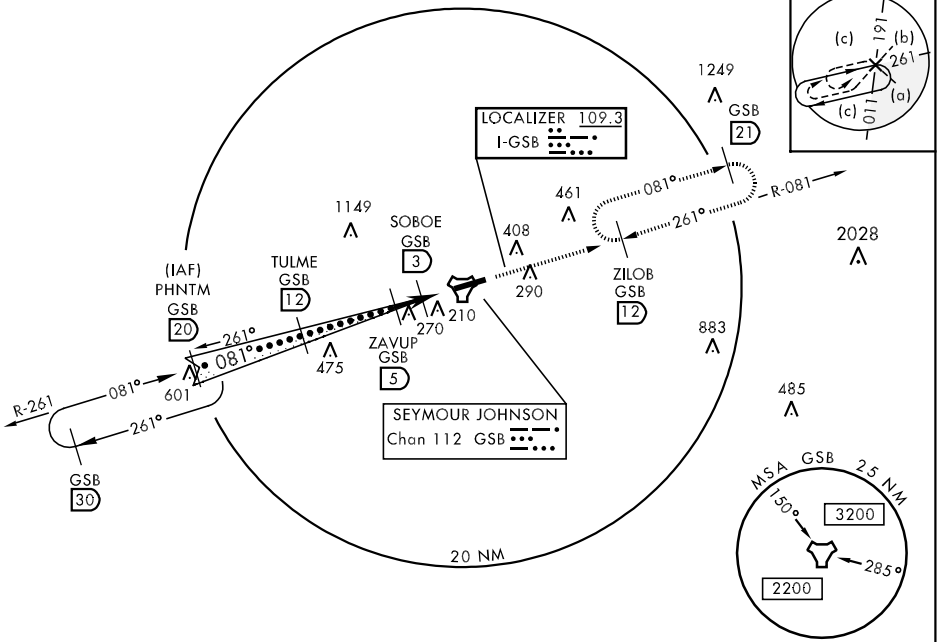
▽ \* When ALS inop, increase RVR to 40 and vis to 3/4 mile.  
 \*\* When ALS inop, increase CAT AB RVR to 55, vis to 1 mile, CAT CDE vis to 1 3/8 miles.



MISSED APPROACH: Climb to 2300 via GSB R-081 to ZILOB and hold.

ATIS ★ <b>317.625</b>	SEYMOUR JOHNSON APP CON 258°-110° <b>123.7 290.9</b> 111°-257° <b>119.7 273.6</b>	SEYMOUR JOHNSON TOWER ★ <b>126.25 370.875</b>	GND CON <b>138.1 275.8</b>	CLNC DEL <b>128.025 270.8</b>
--------------------------	---	--	-------------------------------	----------------------------------

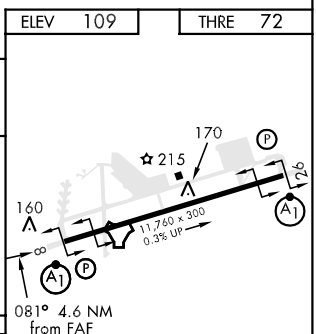
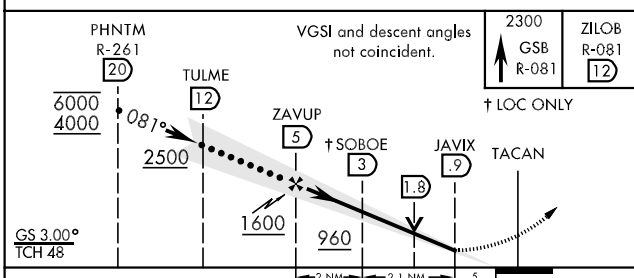
\*\*\* Circling N of Rwy 8-26 not authorized.



SE-2, 07 FEB 2013 to 07 MAR 2013

SE-2, 07 FEB 2013 to 07 MAR 2013

EMERG SAFE ALT 100 NM 3700



CATEGORY	A	B	C	D	E
S-ILS 8*	272/24		200	(200-1/2)	
S-LOC 8**	560/24	488 (500-1/2)	560/50	488 (500-1)	
CIRCLING***	660-1	551 (600-1)	660-1 1/2 551 (600-1 1/2)	660-2 551 (600-2)	760-2 1/4 651 (700-2 1/4)

HIRL Rwy 8-26					
FAF to MAP 4.1 NM					
Knots	120	140	160	180	200
Min:Sec	2:03	1:45	1:32	1:22	1:14

GOLDSBORO, NORTH CAROLINA

35° 20' N-77° 58' W

SEYMOUR JOHNSON AFB (KGSB)

Amtd 4 05APR12

# HI-ILS or LOC/DME RWY 8