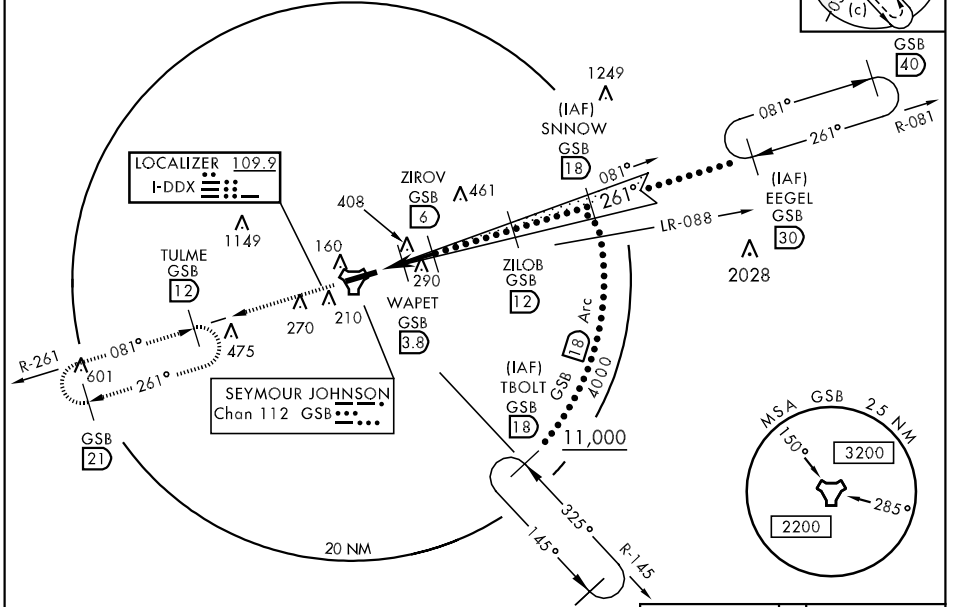
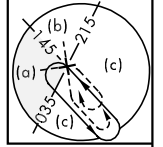


HI-ILS or LOC/DME RWY 26

LOC I-DDX 109.9	APCH CRS 261°	Rwy Idg THRE 109 Arpt Elev 109	JAL-169 [USAF]	SEYMOUR JOHNSON AFB (KGSB)
* When ALS inop, increase RVR to 40 and vis to 3/4 mile. ** When ALS inop, increase CAT AB RVR to 55 and vis to 1 mile, CAT CDE RVR to 60 and vis to 1 1/2 miles.		ALSIF-1	MISSED APPROACH: Climb to 2200 via GSB R-261 to TULME and hold.	

ATIS ★ 317.625	SEYMOUR JOHNSON APP CON 258°-110° 123.7 290.9 111°-257° 119.7 273.6	SEYMOUR JOHNSON TOWER ★ 126.25 370.875	GND CON 138.1 275.8	CLNC DEL 128.025 270.8
--------------------------	---	--	-------------------------------	----------------------------------

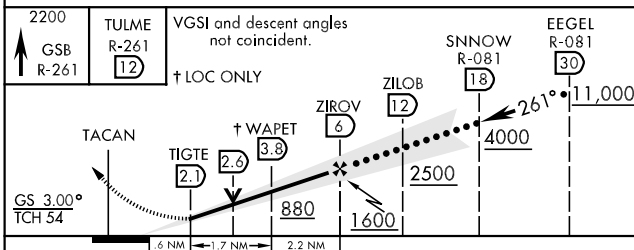
*** Circling N of Rwy 8-26 not authorized.



SE-2, 07 FEB 2013 to 07 MAR 2013

SE-2, 07 FEB 2013 to 07 MAR 2013

EMERG SAFE ALT 100 NM 3700



ELEV 109	THRE 109
170 ^Λ	
HIRL Rwy 8-26	
FAF to MAP 3.9 NM	
Knots	120 140 160 180 200
Min:Sec	1:57 1:40 1:28 1:18 1:10

CATEGORY	A	B	C	D	E
S-ILS 26*	309/24		200	(200-1/2)	
S-LOC 26**	500/24	391 (400-1/2)	500/35	391 (400-3/4)	
CIRCLING***	660-1	551 (600-1)	660-1 1/2 551 (600-1 1/2)	660-2 551 (600-2)	760-2 1/4 651 (700-2 1/4)

HI-ILS or LOC/DME RWY 26