

# RNAV (GPS) RWY 22

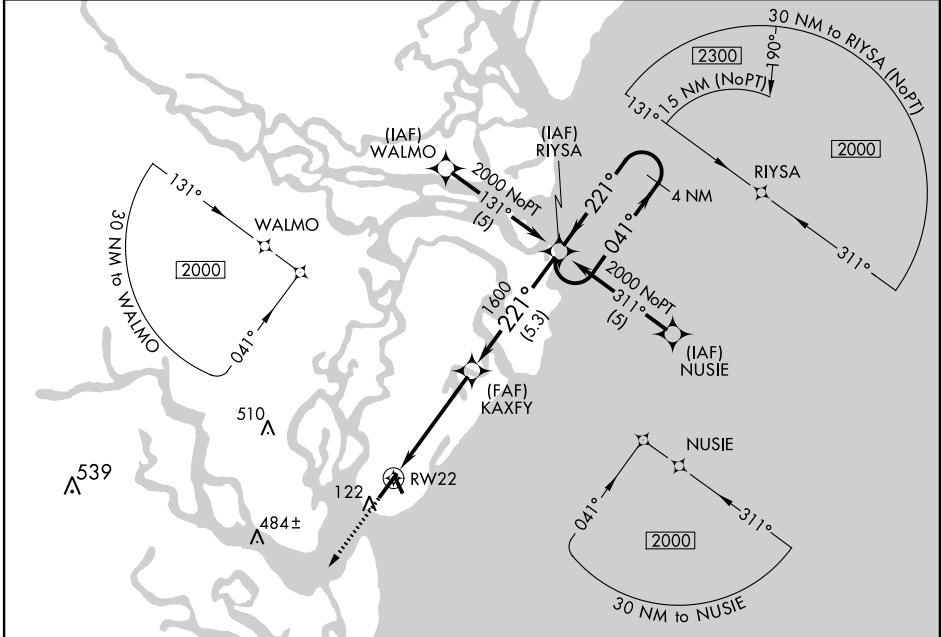
BRUNSWICK / MALCOLM McKINNON (SSI)

APP CRS <b>221°</b>	Rwy Idg <b>4671</b>
	TDZE <b>17</b>
	Apt Elev <b>19</b>

**▽** GPS or RNP-0.3 Required. DME/DME RNP-0.3 NA.  
**△** NA If local altimeter setting not received, use Jacksonville Intl altimeter setting and increase all MDAs 100 feet.

MISSED APPROACH: Climb to 2000 direct VIXRY WP and hold.

ASOS <b>120.025</b>	JACKSONVILLE CENTER <b>126.75 277.4</b>	UNICOM <b>123.05</b> (CTAF) <b>①</b>
------------------------	--	---

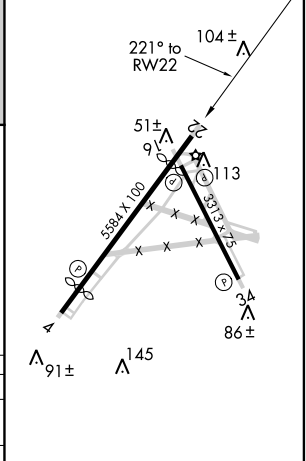


SE-4, 07 FEB 2013 to 07 MAR 2013

SE-4, 07 FEB 2013 to 07 MAR 2013



ELEV 19	<b>D</b> TDZE 17
---------	------------------



**2000** **VIXRY** VGSI and descent angles not coincident (VGSI Angle 4.00/TCH 54).

	RW22		KAXFY	RIYSA	2000
	4.7 NM		5.3 NM		

CATEGORY	A	B	C	D
RNAV MDA	460-1	443 (500-1)	460-1½ 443 (500-1½)	460-1½ 443 (500-1½)
CIRCLING	460-1 441 (500-1)	480-1 461 (500-1)	480-1½ 461 (500-1½)	580-2 561 (600-2)

MRL all Rwys **①**

# RNAV (GPS) RWY 22