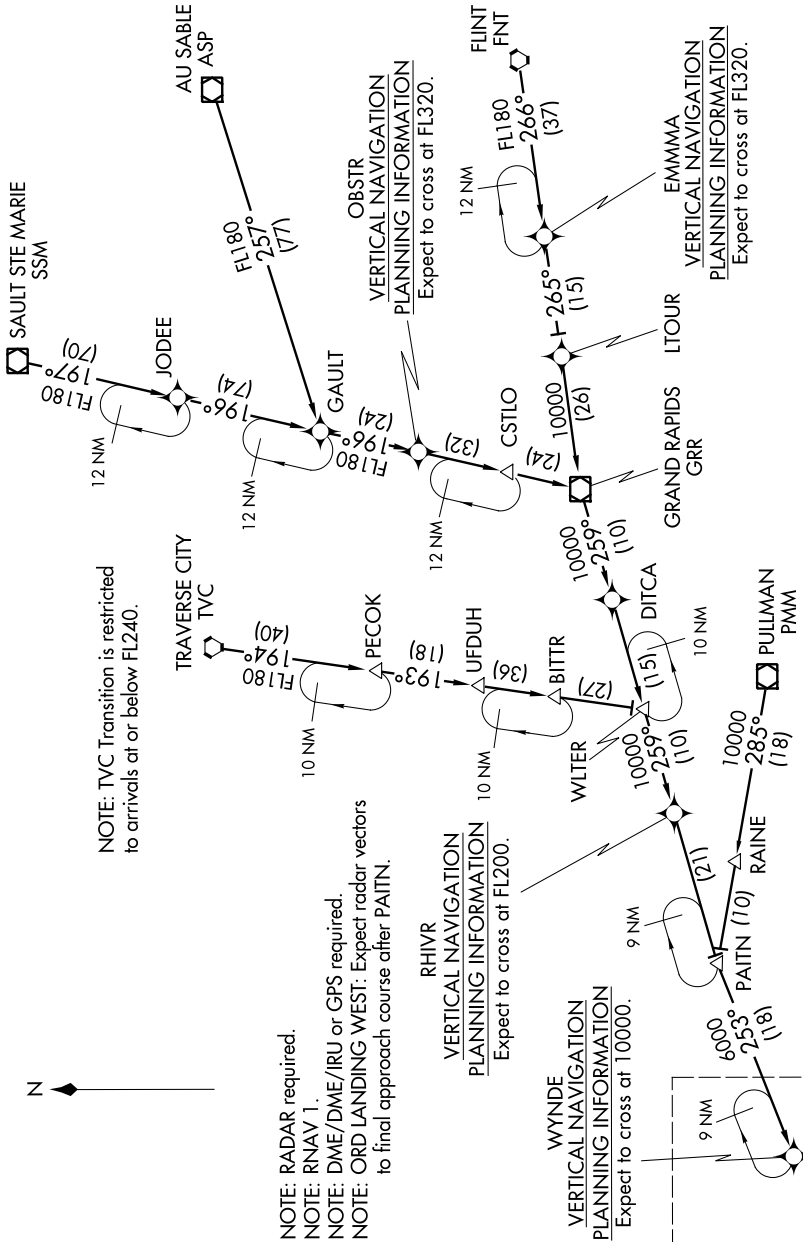
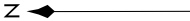


WYNDE FOUR ARRIVAL (RNAV) Transition Routes

EC-3, 07 FEB 2013 to 07 MAR 2013

ORD ATIS
135.4 282.225
CHICAGO APP CON
119.0 393.1

NOTE: ASP, FNT, and PMM Transitions: For non-GPS equipped aircraft, GJ DME must be operational.
NOTE: SSM Transition: For non-GPS equipped aircraft, SAW and GJ DMEs must be operational.
NOTE: TVC Transition: For non-GPS equipped aircraft, GRR, MBL, and GJ DMEs must be operational.



NOTE: TVC Transition is restricted to arrivals at or below FL240.

NOTE: RADAR required.
NOTE: RNAV 1.
NOTE: DME/DME/IRU or GPS required.
NOTE: ORD LANDING WEST: Expect radar vectors to final approach course after PAITN.

See following page for arrival route.

(Continued on next page)

EC-3, 07 FEB 2013 to 07 MAR 2013

NOTE: Chart not to scale.