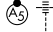


WAAS CH 78204 W09A	APP CRS 093°	Rwy ldg TDZE Apt Elev	7967 660 672
--	------------------------	-----------------------------	---

RNAV (GPS) RWY 9R

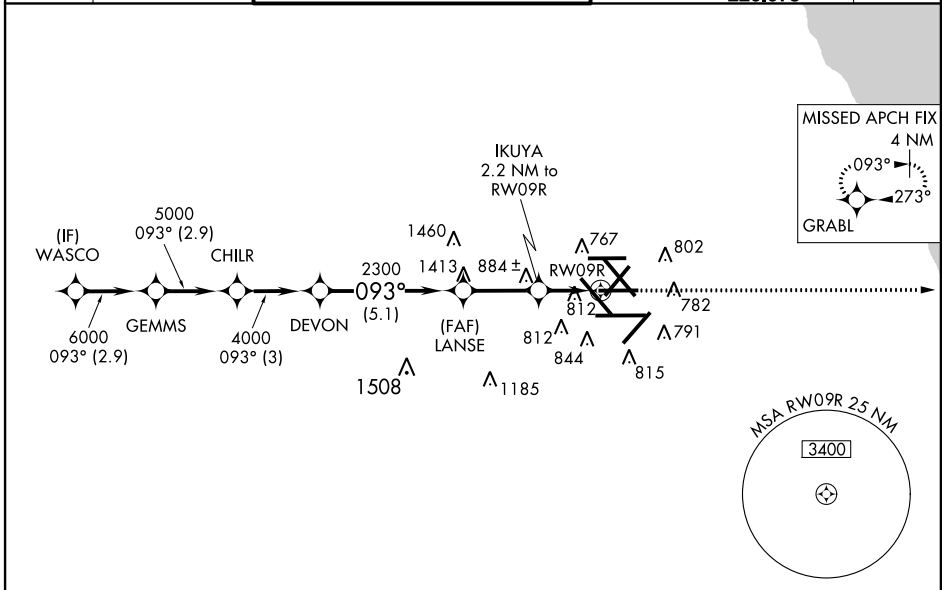
CHICAGO-O'HARE INTL (ORD)

▽ For inoperative MALS, increase LPV all Cats visibility to RVR 5000. For uncompensated Baro-VNAV systems, LNAV/VNAV NA below -16°C (4°F) or above 47°C (116°F). DME/DME RNP-0.3 NA. Simultaneous approach authorized with Rwy 9L and Rwy 10. LNAV procedure NA during simultaneous operations. Use of FD or AP providing RNAV track guidance required during simultaneous operations.

MALS 

MISSED APPROACH: Climb to 4000 direct GRABL and hold.

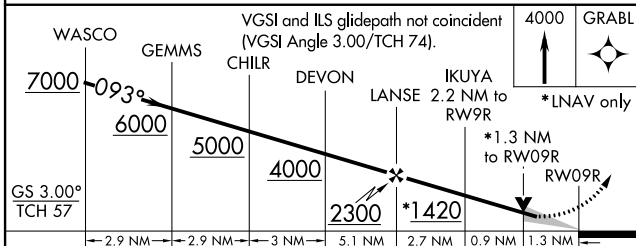
ATIS 135.4 282.225	CHICAGO APP CON 119.0 393.1	O'HARE TOWERS (Rwy 9L/27R) 128.15 126.9 132.7 348.0 (CENTER)	(TWR NORTH) GND CON 124.125 121.75 (OBND) 121.9 (IBND) 226.675	CLNC DEL 121.6
--	---------------------------------------	---	--	--------------------------



EC-3, 07 FEB 2013 to 07 MAR 2013

EC-3, 07 FEB 2013 to 07 MAR 2013

RADAR REQUIRED



CATEGORY	A	B	C	D
LPV DA	976/24 316 (400-1/2)			
LNAV/VNAV DA	1097/50 437 (500-1)			
LNAV MDA	1160/24 500 (500-1/2)	1160/40 500 (500-3/4)	1160/50 500 (500-1)	
CIRCLING	1220-1 548 (600-1)	1220-1 1/2 548 (600-1/2)	1240-2 568 (600-2)	

ELEV 672 **D** TDZE 660