


WAAS CH <b>99508</b> <b>W09B</b>	APP CRS <b>093°</b>	Rwy ldg <b>7500</b> THRE <b>668</b> Apt Elev <b>672</b>
--	------------------------	---

# RNAV (GPS) RWY 9L

CHICAGO-O'HARE INTL (ORD)

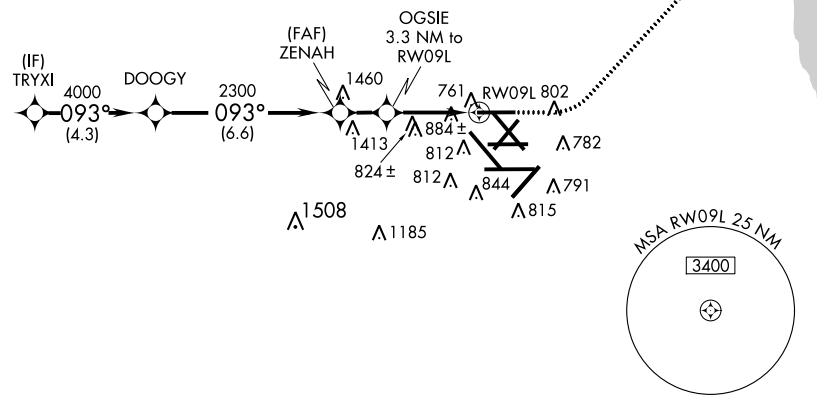
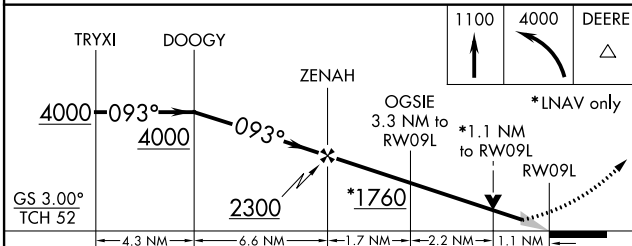
▼ For uncompensated Baro-VNAV systems, LNAV/VNAV NA below -22°C (-7°F) or above 35°C (95°F). Simultaneous approach authorized with Rwy 9R and Rwy 10. DME/DME RNP-0.3 NA. For inoperative ALSF-2, increase LNAV Cat C/D visibility to RVR 6000. LNAV procedure NA during simultaneous operations. Use of FD or AP providing RNAV track guidance required during simultaneous operations.

**ALSF-2**  


**MISSED APPROACH:**  
 Climb to 1100 then climbing left turn to 4000 direct DEERE and hold.

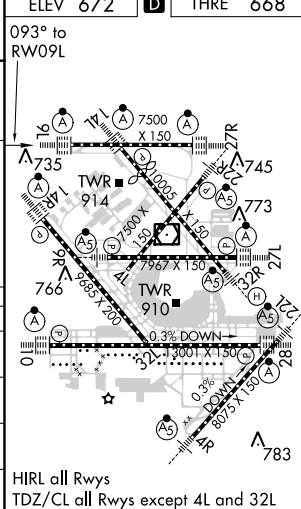
ATIS <b>135.4</b> <b>282.225</b>	CHICAGO APP CON <b>119.0 393.1</b>	O'HARE TOWERS (Rwy 9L/27R) <b>128.15 120.75 126.9 132.7 348.0</b> (CENTER)	(TWR NORTH) GND CON <b>124.125</b>	(TWR CENTER) <b>121.75</b> (OBND) <b>121.9</b> (IBND) <b>226.675</b>	CLNC DEL <b>121.6</b>
--	---------------------------------------	--	---------------------------------------	--	--------------------------

**RADAR REQUIRED**

ELEV 672	<b>D</b>	THRE 668
----------	----------	----------

093° to RW09L



HIRL all Rwy's  
 TDZ/CL all Rwy's except 4L and 32L

CATEGORY	A	B	C	D
LPV DA		868/24	200 (200-½)	
LNAV/VNAV DA		1036/40	368 (400-¾)	
LNAV MDA	1080/24	412 (500-½)	1080/40	412 (500-¾)
CIRCLING	1220-1	548 (600-1)	1220-1½ 548 (600-1½)	1240-2 568 (600-2)

EC-3, 07 FEB 2013 to 07 MAR 2013

EC-3, 07 FEB 2013 to 07 MAR 2013