


WAAS CH <b>81929</b> <b>W04A</b>	APP CRS <b>044°</b>	Rwy Idg THRE <b>8075</b> <b>661</b> Apt Elev <b>672</b>
--	------------------------	--

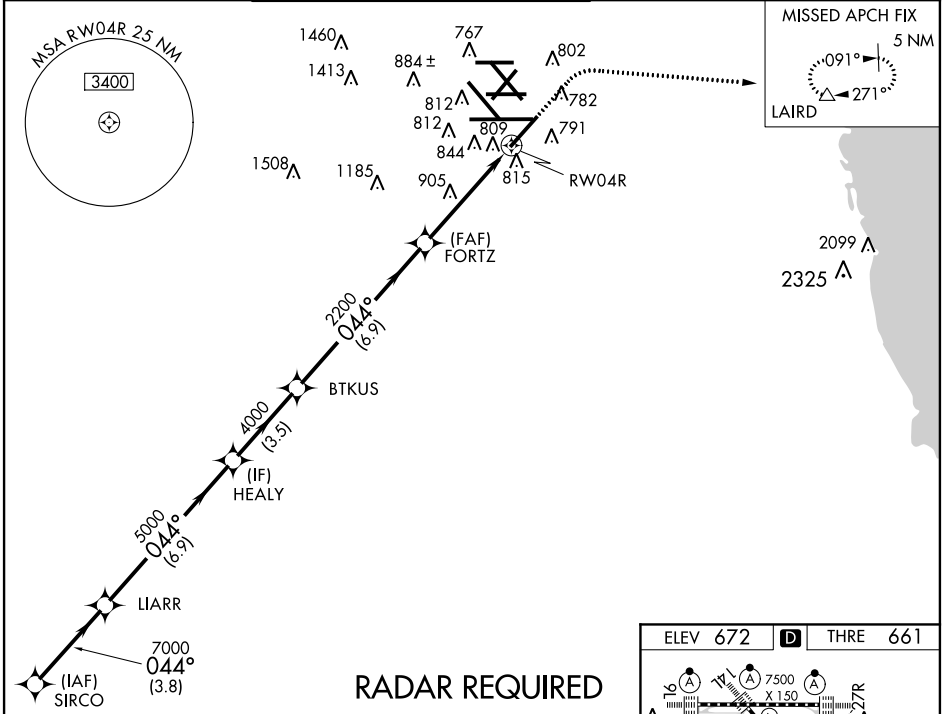
# RNAV (GPS) RWY 4R

CHICAGO-O'HARE INTL (ORD)

**▽** For uncompensated Baro-VNAV systems, LNAV/VNAV NA below -22°C (-7°F) or above 39°C (102°F). Simultaneous approach authorized with Rwy 4L. DME/DME RNP-0.3 NA. LNAV procedure NA during simultaneous operations. Use of FD or AP providing RNAV track guidance required during simultaneous operations.

**MALSR**  **MISSED APPROACH:** Climb to 1200 then climbing right turn to 4000 direct LAIRD and hold, continue climb-in-hold to 4000.

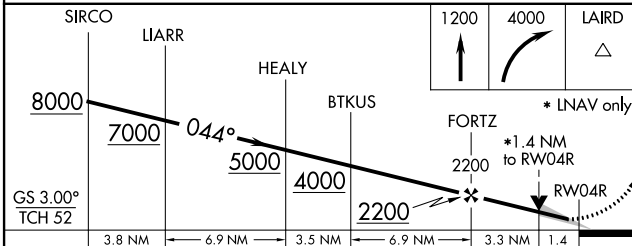
ATIS <b>135.4</b> <b>282.225</b>	CHICAGO APP CON <b>119.0 393.1</b>	O'HARE TOWERS <b>128.15</b> (Rwy 9L/27R) <b>120.75 126.9 132.7 348.0</b> (CENTER)	(TWR NORTH) GND CON <b>124.125</b>	(TWR CENTER) <b>121.75</b> (OBND) <b>121.9</b> (IBND) <b>226.675</b>	CLNC DEL <b>121.6</b>
--	---------------------------------------	---	---------------------------------------	---	--------------------------



EC-3, 07 FEB 2013 to 07 MAR 2013

EC-3, 07 FEB 2013 to 07 MAR 2013

## RADAR REQUIRED



CATEGORY	A	B	C	D
LPV DA		861/24	200 (200-½)	
LNAV/VNAV DA		990/32	329 (400-¾)	
LNAV MDA	1160/24	499 (500-½)	1160/50	499 (500-1)
CIRCLING	1220-1	548 (600-1)	1220-1½ 548 (600-1½)	1240-2 568 (600-2)

