

WAAS CH 62905 W04B	APP CRS 042°	Rwy Idg THRE 656 Apt Elev 672	7500
--	------------------------	---	-------------

RNAV (GPS) RWY 4L

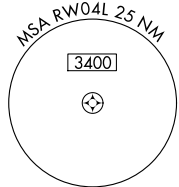
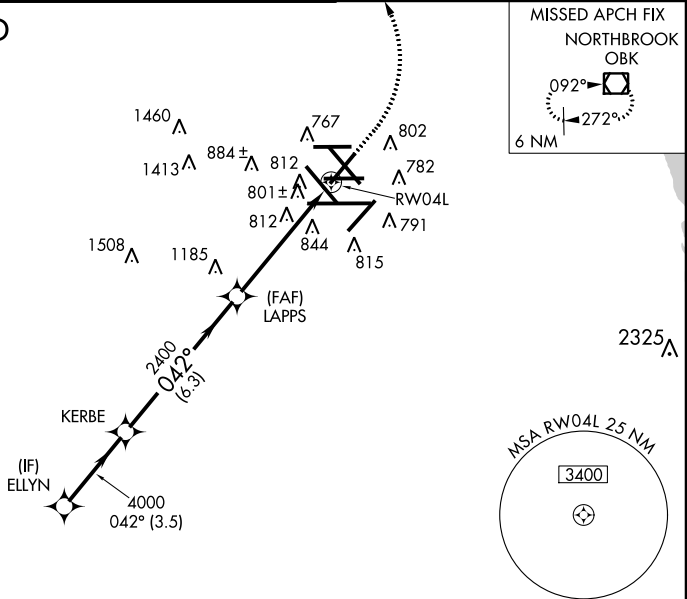
CHICAGO-O'HARE INTL (ORD)

▼ For uncompensated Baro-VNAV systems, LNAV/VNAV NA below -22°C (-7°F) or above 39°C (102°F). Simultaneous approach authorized with Rwy 4R. DME/DME RNP-0.3 NA. LNAV procedure NA during simultaneous operations. Use of FD or AP providing RNAV track guidance required during simultaneous operations.

MISSED APPROACH: Climb to 1300 then climbing left turn to 4000 direct OBK VOR/DME and hold.

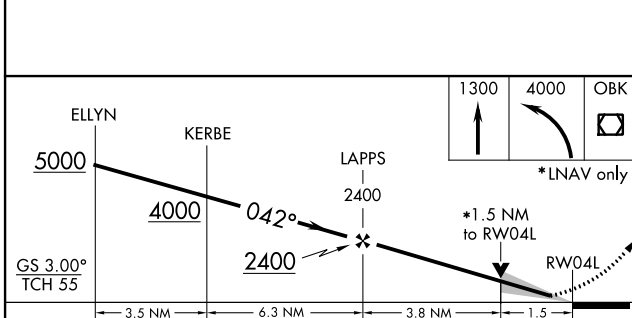
ATIS 135.4 282.225	CHICAGO APP CON 119.0 393.1	O'HARE TOWERS 128.15 (Rwy 9L/27R) 120.75 126.9 132.7 348.0 (CENTER)	(TWR NORTH) GND CON (TWR CENTER) 124.125 121.75 (OBND) 121.9 (IBND) 226.675	CLNC DEL 121.6
--	---------------------------------------	---	--	--------------------------

RADAR REQUIRED



EC-3, 07 FEB 2013 to 07 MAR 2013

EC-3, 07 FEB 2013 to 07 MAR 2013



CATEGORY	A	B	C	D
LPV DA		856/40	200 (200-¾)	
LNAV/VNAV DA		1115-1½	459 (500-1½)	
LNAV MDA	1180/55	524 (600-1)	1180-1½	524 (600-1½)
CIRCLING	1220-1	548 (600-1)	1220-1½ 548 (600-1½)	1240-2 568 (600-2)

