

CHICAGO, ILLINOIS

AL-166 (FAA)

RNAV (GPS) RWY 32R

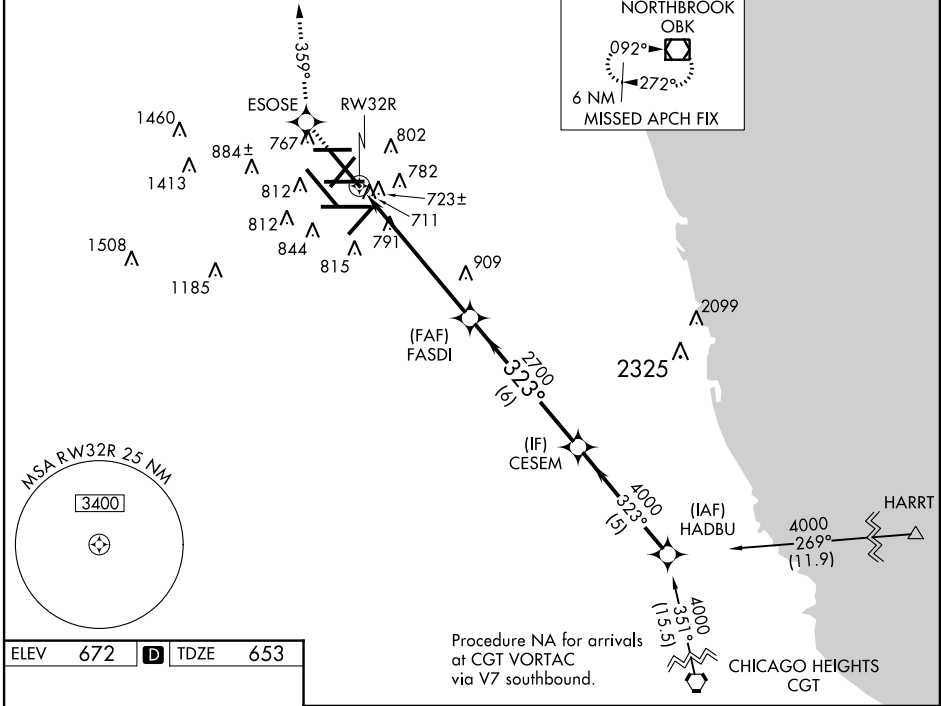
CHICAGO-O'HARE INTL (ORD)

WAAS CH 69504 W32A	APP CRS 323°	Rwy Idg 10005 TDZE 653 Apt Elev 672
--	------------------------	--

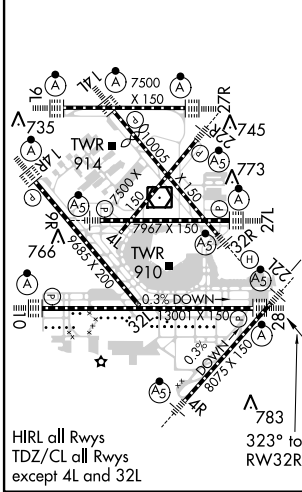
▼ For inoperative MALS, increase LPV all Cats visibility to RVR 5000. For uncompensated Baro-VNAV systems, LNAV/VNAV NA below -16°C (4°F) or above 48°C (118°F). DME/DME RNP-0.3 NA.

MALS MISSED APPROACH: Climb to 4000 direct ESOSE and right turn via 359° track to OBK VOR/DME and hold.

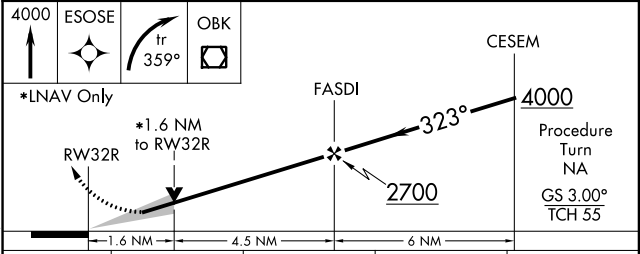
ATIS 282.225	CHICAGO APP CON 119.0 393.1	O'HARE TOWERS (Rwy 9L/27R) 128.15 126.9 132.7 348.0 (CENTER)	(TWR NORTH) GND CON (TWR CENTER) 124.125 121.75 (OBND) 121.9 (IBND) 226.675	CLNC DEL 121.6
------------------------	---------------------------------------	---	---	--------------------------



ELEV 672	D	TDZE 653
----------	----------	----------



HIRL all Rwy's
TDZ/CL all Rwy's
except 4L and 32L



CATEGORY	A	B	C	D
LPV DA	928/24 275 (300-½)			
LNAV/VNAV DA	1073/50 420 (500-1)			
LNAV MDA	1220/24 567 (600-½)	1220/50 567 (600-1)	1220/60 567 (600-1¼)	1220/60 567 (600-1¼)
CIRCLING	1220-1 548 (600-1)	1220-1½ 548 (600-1½)	1240-2 568 (600-2)	1240-2 568 (600-2)

CHICAGO, ILLINOIS
Amdt 1B 12320

41°59'N-87°54'W

CHICAGO-O'HARE INTL (ORD) RNAV (GPS) RWY 32R

EC-3, 07 FEB 2013 to 07 MAR 2013

EC-3, 07 FEB 2013 to 07 MAR 2013