

WAAS CH 42804 W28A	APP CRS 273°	Rwy Idg THRE 651 Apt Elev 672
--	------------------------	--

RNAV (GPS) RWY 28

CHICAGO-O'HARE INTL (ORD)

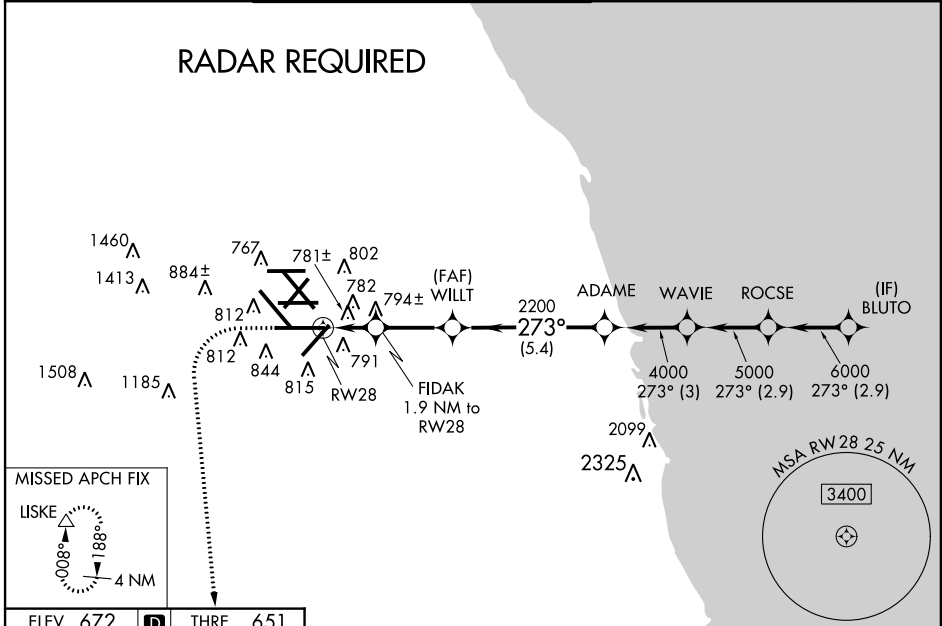
▼ For uncompensated Baro-VNAV systems, LNAV/VNAV NA below -22°C (-7°F) or above 35°C (95°F). Simultaneous approach authorized with Rwy 27L/R. DME/DME RNP-0.3 NA. For inoperative ALSF, increase LPV visibility to RVR 4500 all Cats. LNAV procedure NA during simultaneous operations. Use of FD or AP providing RNAV track guidance required during simultaneous operations.



MISSED APPROACH: Climb to 1200 then climbing left turn to 4000 direct LISKE and hold.

ATIS 135.4 282.225	CHICAGO APP CON 119.0 393.1	O'HARE TOWERS (Rwy 9L/27R) 128.15 120.75 126.9 132.7 348.0 (CENTER)	(TWR NORTH) GND CON 124.125	(TWR CENTER) CON 121.75 (OBND) 121.9 (IBND) 226.675	CLNC DEL 121.6
--	---------------------------------------	--	---------------------------------------	---	--------------------------

RADAR REQUIRED

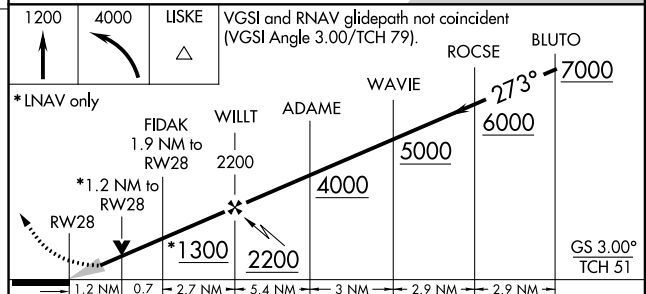
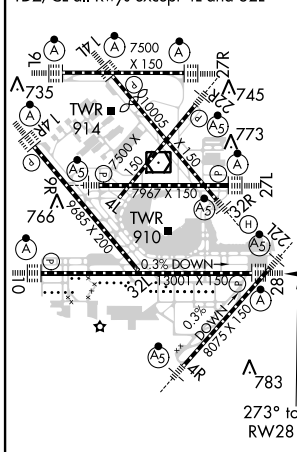


EC-3, 07 FEB 2013 to 07 MAR 2013

EC-3, 07 FEB 2013 to 07 MAR 2013

ELEV 672	D	THRE 651
-----------------	----------	-----------------

HIRL all Rwys
TDZ/CL all Rwys except 4L and 32L



CATEGORY	A	B	C	D
LPV DA		945/24	294 (300-½)	
LNAV/VNAV DA		1133/60	482 (500-1¼)	
LNAV MDA	1100/24	449 (500-½)	1100/45	449 (500-¾)
CIRCLING	1220-1	548 (600-1)	1220-1½ 548 (600-1½)	1240-2 568 (600-2)