

WAAS CH 69508 W27B	APP CRS 273°	Rwy Idg THRE 664 Apt Elev 672	7500
--	------------------------	---	-------------

RNAV (GPS) RWY 27R

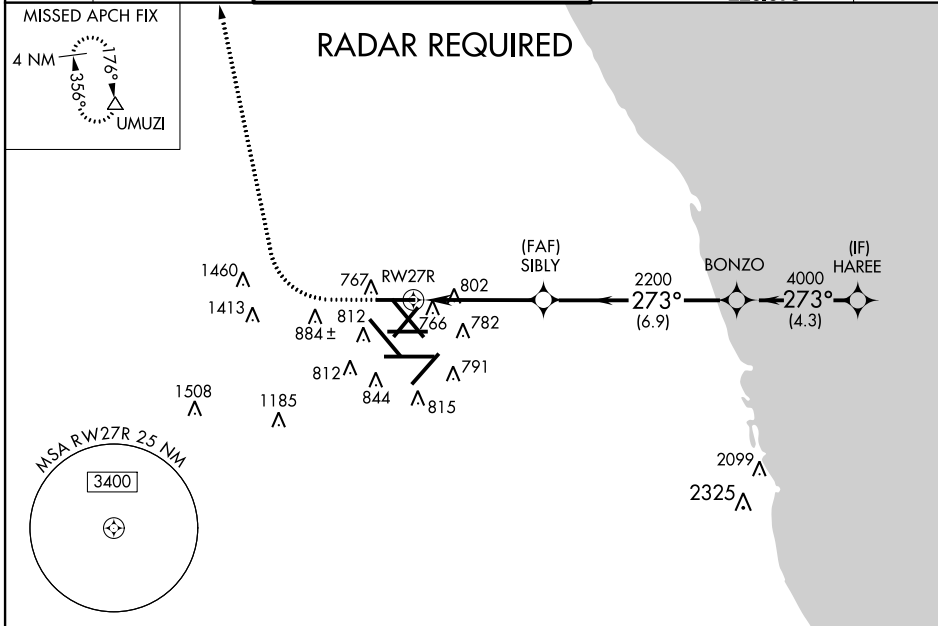
CHICAGO-O'HARE INTL (ORD)

▼ For uncompensated Baro-VNAV systems, LNAV/VNAV NA below -22°C (-7°F) or above 35°C (95° F). Simultaneous approach authorized with Rwy 27L and Rwy 28. DME/DME RNP-0.3 NA. LNAV procedure NA during simultaneous operations. Use of FD or AP providing RNAV track guidance required during simultaneous operations.

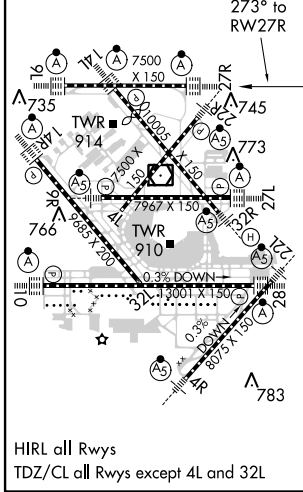


MISSED APPROACH: Climb to 1100 then climbing right turn to 4000 direct UMUZI and hold.

ATIS 135.4 282.225	CHICAGO APP CON 119.0 393.1	O'HARE TOWERS (Rwy 9L/27R) 128.15 126.9 132.7 348.0 (CENTER)	(TWR NORTH) GND 124.125	CON (TWR CENTER) 121.75 (OBND) 121.9 (IBND) 226.675	CLNC DEL 121.6
--	---------------------------------------	---	-----------------------------------	---	--------------------------



ELEV 672	D	THRE 664
----------	---	----------



EC-3, 07 FEB 2013 to 07 MAR 2013

EC-3, 07 FEB 2013 to 07 MAR 2013