

WAAS CH 77804 W27A	APP CRS 273°	Rwy Idg 7782 TDZE 653 Apt Elev 672
--	------------------------	--

RNAV (GPS) RWY 27L

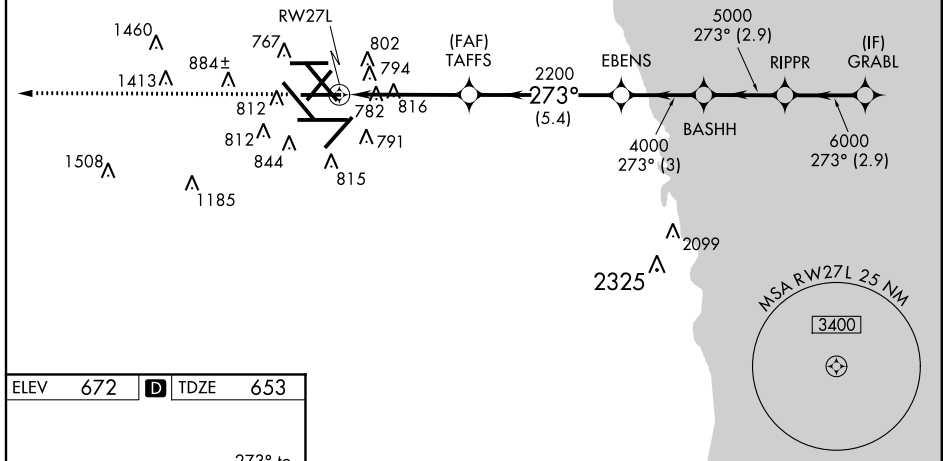
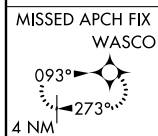
CHICAGO-O'HARE INTL (ORD)

▼ For inoperative ALSF-2, increase LPV all Cats visibility to RVR 5000. For uncompensated Baro-VNAV systems, LNAV/VNAV NA below -16°C (4°F) or above 47°C (116°F). DME/DME RNP-0.3 NA. Simultaneous approach authorized with Rwy 27R and Rwy 28. LNAV procedure NA during simultaneous operations. Use of FD or AP providing RNAV track guidance required during simultaneous operations.

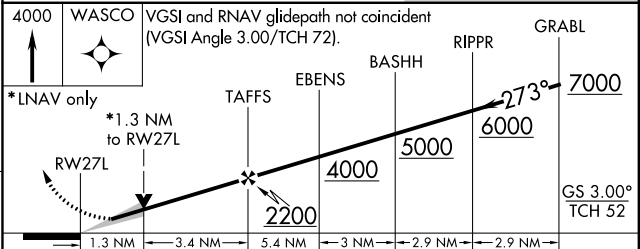
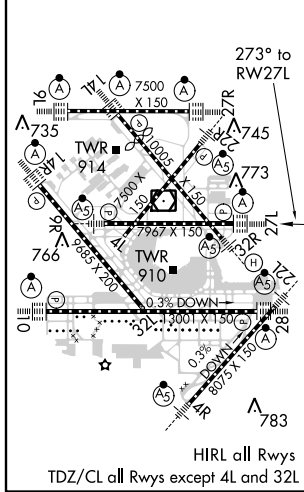
ALSF-2
MISSED APPROACH:
Climb to 4000 direct WASCO and hold.

ATIS 135.4 282.225	CHICAGO APP CON 119.0 393.1	O'HARE TOWERS 128.15 (Rwy 9L/27R) 120.75 126.9 132.7 348.0 (CENTER)	(TWR NORTH) GND CON 124.125	(TWR CENTER) (IFBND) 121.75 121.9 (IFBND) 226.675	CLNC DEL 121.6
--	---------------------------------------	---	---------------------------------------	---	--------------------------

RADAR REQUIRED



ELEV	672	D	TDZE	653
------	-----	----------	------	-----



CATEGORY	A	B	C	D
LPV DA	935/24 282 (300-½)			
LNAV/VNAV DA	1111/50 458 (500-1)			
LNAV MDA	1120/24	467 (500-½)	1120/40 467 (500-¾)	1120/50 467 (500-1)
CIRCLING	1220-1	548 (600-1)	1220-1½ 548 (600-1½)	1240-2 568 (600-2)

EC-3, 07 FEB 2013 to 07 MAR 2013

EC-3, 07 FEB 2013 to 07 MAR 2013