

WAAS CH 90504 W22A	APP CRS 223°	Rwy Idg THRE 648 Apt Elev 672
--	------------------------	---

RNAV (GPS) RWY 22R

CHICAGO-O'HARE INTL (ORD)

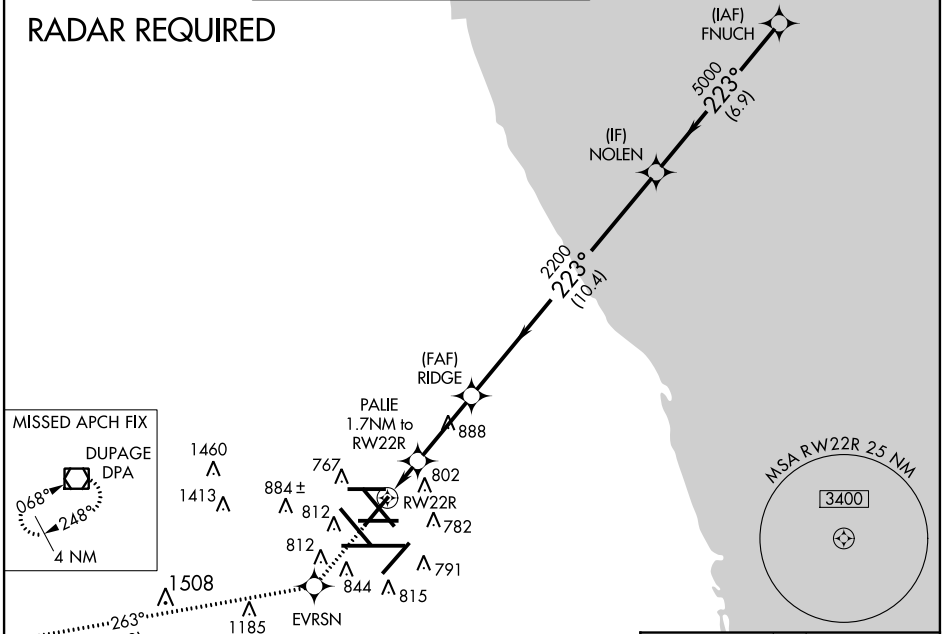
⚠ For uncompensated Baro-VNAV systems, LNAV/VNAV NA below -22°C (-7°F) or above 39°C (102°F). Simultaneous approach authorized with Rwy 22L. DME/DME RNP-0.3 NA. LNAV procedure NA during simultaneous operations. Use of FD or AP providing RNAV track guidance required during simultaneous operations.



MALSR
MISSED APPROACH: Climb to 4000 direct EVRSN and on track 263° to DPA VOR/DME and hold.

ATIS 135.4 282.225	CHICAGO APP CON 119.0 393.1	O'HARE TOWERS 128.15 (Rwy 9L/27R) 120.75 126.9 132.7 348.0 (CENTER)	(TWR NORTH) GND CON (TWR CENTER) 124.125 121.75 (OBND) 121.9 (IBND) 226.675	CLNC DEL 121.6
--	---------------------------------------	---	---	--------------------------

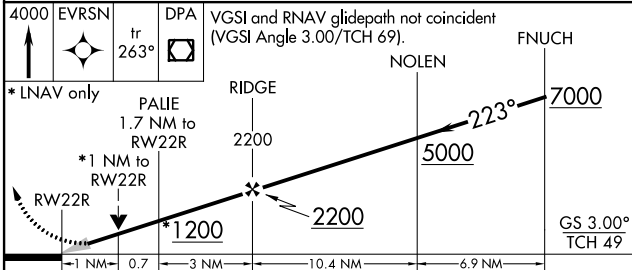
RADAR REQUIRED



EC-3, 07 FEB 2013 to 07 MAR 2013

EC-3, 07 FEB 2013 to 07 MAR 2013

4000 EVRSN	DPA	VGSI and RNAV glidepath not coincident (VGSI Angle 3.00/TCH 69).
------------	-----	--



CATEGORY	A	B	C	D
LPV DA		848/24	200 (200-½)	
LNAV/VNAV DA		968/32	320 (300-¾)	
LNAV MDA	1040/24	392 (400-½)	1040/35	392 (400-¾)
CIRCLING	1220-1	548 (600-1)	1220-1½ 548 (600-½)	1240-2 568 (600-2)

