

WAAS CH <b>50228</b> <b>W22B</b>	APP CRS <b>225°</b>	Rwy Idg THRE <b>654</b> Apt Elev <b>672</b>
--	------------------------	---

# RNAV (GPS) RWY 22L

CHICAGO-O'HARE INTL (ORD)

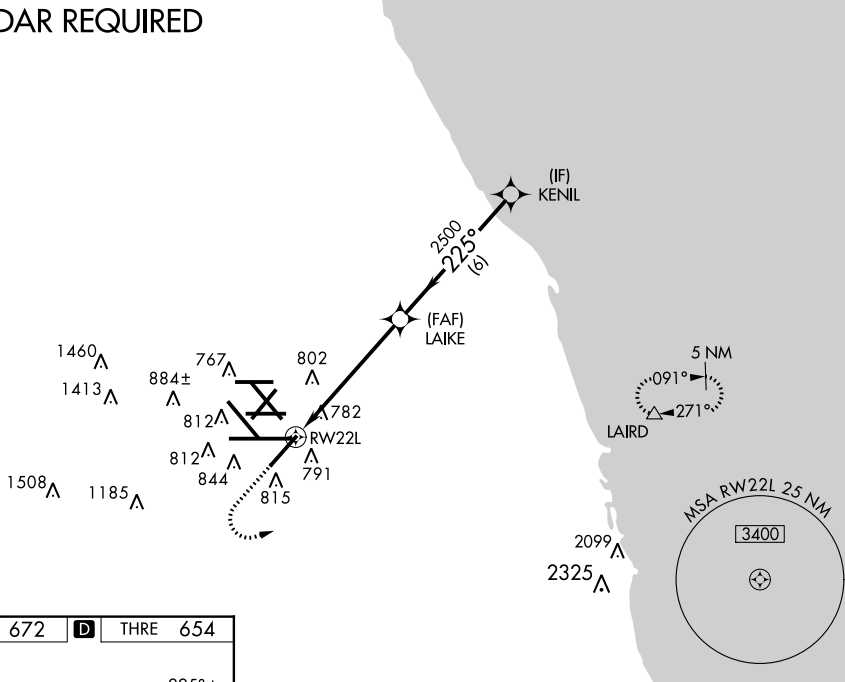
▼ For uncompensated Baro-VNAV systems, LNAV/VNAV NA below -22°C (-7°F) or above 39°C (102°F). Simultaneous approach authorized with Rwy 22R. DME/DME RNP-0.3 NA. LNAV procedure NA during simultaneous operations. Use of FD or AP providing RNAV track guidance required during simultaneous operations.



MISSED APPROACH: Climb to 1100 then climbing left turn to 4000 direct LAIRD and hold, continue climb-in-hold to 4000.

ATIS <b>135.4</b> <b>282.225</b>	CHICAGO APP CON <b>119.0 393.1</b>	O'HARE TOWERS (Rwy 9L/27R) <b>128.15 126.9 132.7 348.0</b> (CENTER)	(TWR NORTH) GND CON (TWR CENTER) <b>124.125 121.75 (OBND)</b> <b>121.9 (IBND)</b> <b>226.675</b>	CLNC DEL <b>121.6</b>
--	---------------------------------------	---	---	--------------------------

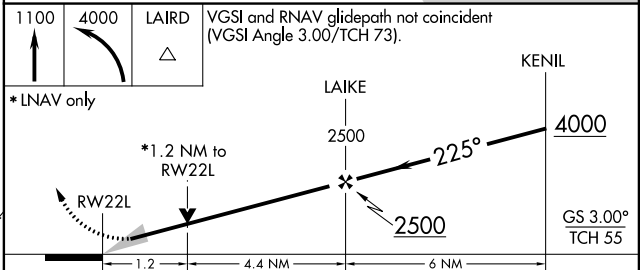
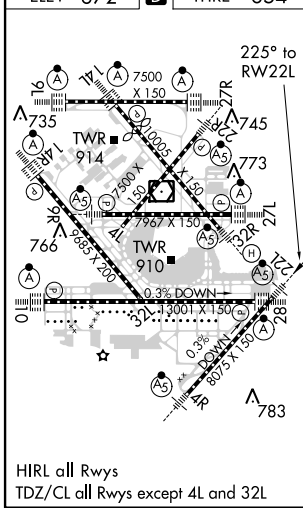
## RADAR REQUIRED



EC-3, 07 FEB 2013 to 07 MAR 2013

EC-3, 07 FEB 2013 to 07 MAR 2013

ELEV 672	<b>D</b>	THRE 654
----------	----------	----------



CATEGORY	A	B	C	D
LPV DA		854/24	200 (200-½)	
LNAV/VNAV DA		1066/45	412 (400-¾)	
LNAV MDA	1120/24	466 (500-½)	1120/50	466 (500-1)
CIRCLING	1220-1	548 (600-1)	1220-1½ 548 (600-1½)	1240-2 568 (600-2)