

WAAS CH 93603 W14B	APP CRS 143°	Rwy Idg THRE 666 Apt Elev 672
--	------------------------	---

RNAV (GPS) RWY 14R

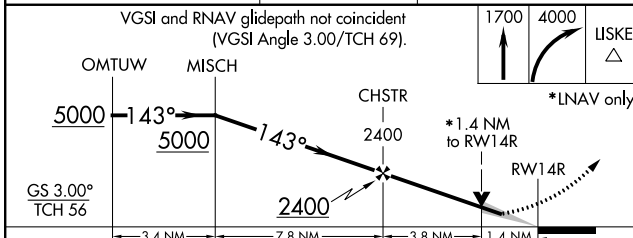
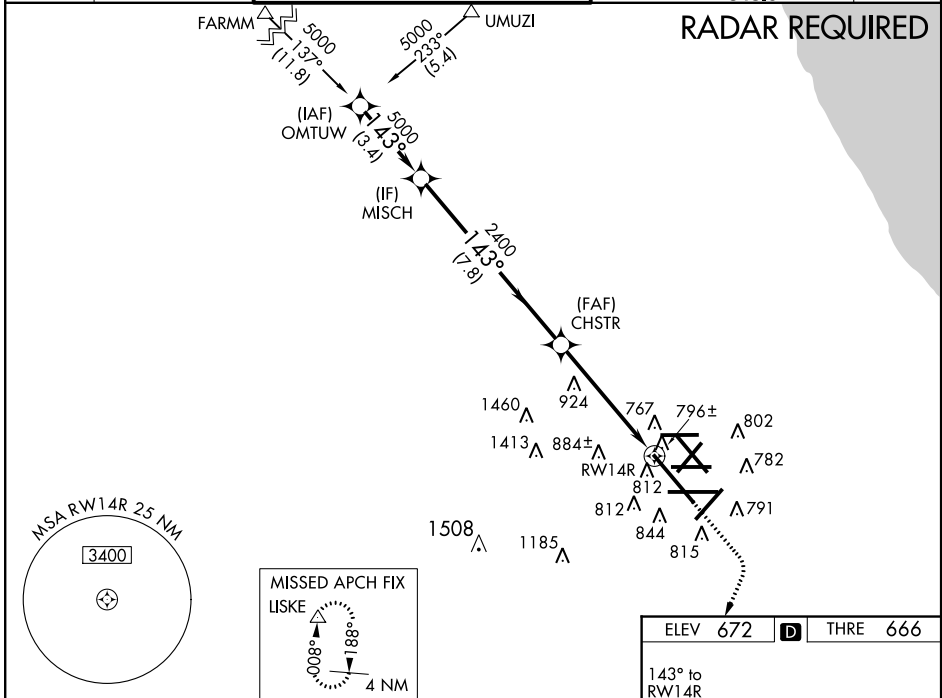
CHICAGO-O'HARE INTL (ORD)

▼ For uncompensated Baro-VNAV systems, LNAV/VNAV NA below -22°C (-7°F) or above 35°C (95°F). DME/DME RNP-0.3 NA. For inoperative ALSF-2, increase LNAV/VNAV visibility to RVR 6000 all Cats and LNAV Cat C/D visibility to 1 3/8 mile. Simultaneous approach authorized with Rwy 14L. LNAV procedure NA during simultaneous operations. Use of FD or AP providing RNAV track guidance required during simultaneous operations.

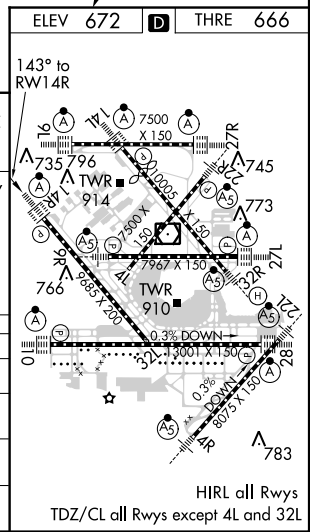
ALSF-2

MISSED APPROACH:
Climb to 1700 then climbing right turn to 4000 direct LISKE and hold.

ATIS 135.4 282.225	CHICAGO APP CON 119.0 393.1	O'HARE TOWERS (Rwy 9L/27R) 128.15 126.9 132.7 390.9 (CENTER)	(TWR NORTH) GND CON 124.125	(TWR CENTER) (TWR SOUTH) 121.75 (OBND) 121.9 (IBND) 348.6	CLNC DEL 121.6
---------------------------------	---------------------------------------	---	---------------------------------------	---	--------------------------



CATEGORY	A	B	C	D
LPV DA		866/24	200 (200-1/2)	
LNAV/VNAV DA		1066/45	400 (400-7/8)	
LNAV MDA	1180/24	514 (600-1/2)	1180/55	514 (600-1 1/4)
CIRCLING	1220-1	548 (600-1)	1220-1 1/2	1240-2
			548 (600-1/2)	568 (600-2)



EC-3, 07 FEB 2013 to 07 MAR 2013

EC-3, 07 FEB 2013 to 07 MAR 2013