

WAAS CH 48904 W10A	APP CRS 093°	Rwy Idg THRE 672 Apt Elev 672
----------------------------------------	------------------------	---------------------------------------------------

RNAV (GPS) RWY 10

CHICAGO-O'HARE INTL (ORD)

▼ For uncompensated Baro-VNAV systems, LNAV/VNAV NA below -22°C (-7°F) or above 35°C (95°F). DME/DME RNP-0.3 NA. For inoperative ALSF, increase LNAV Cat C/D visibility to 1½ mile. Simultaneous approach authorized with Rwy 9L/R. LNAV procedure NA during simultaneous operations. Use of FD or AP providing RNAV track guidance required during simultaneous operations.

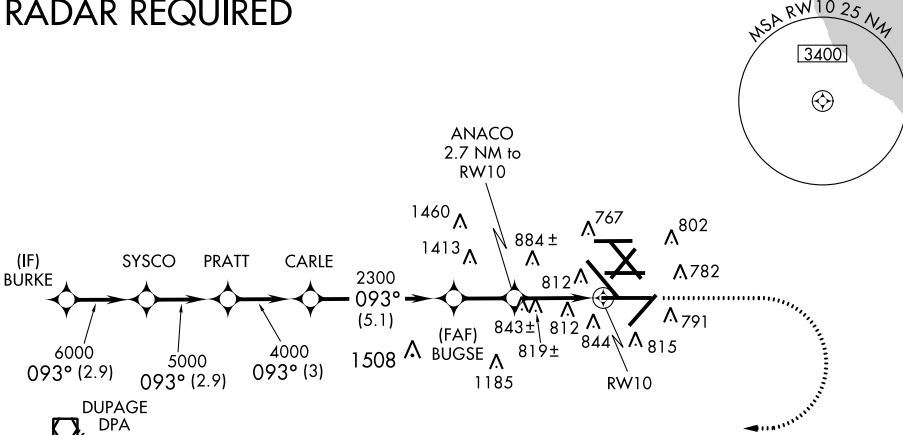
ALSF-2



MISSED APPROACH: Climb to 1200 then climbing right turn to 4000 direct DPA VOR/DME and hold.

ATIS 135.4 282.225	CHICAGO APP CON 119.0 393.1	O'HARE TOWERS 128.15 (Rwy 9L/27R) 120.75 126.9 132.7 348.0 (CENTER)	(TWR NORTH) GND CON (TWR CENTER) 124.125 121.75 (OBND) 121.9 (IBND) 226.675	CLNC DEL 121.6
----------------------------------------	---------------------------------------	-----------------------------------------------------------------------------------------	-----------------------------------------------------------------------------------------------------------	--------------------------

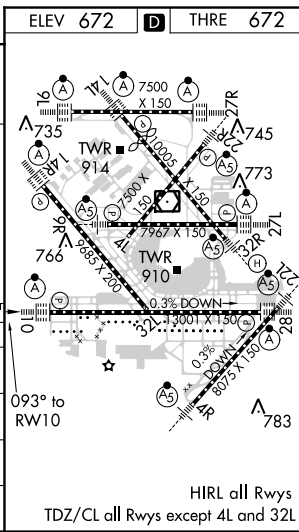
RADAR REQUIRED



EC-3, 07 FEB 2013 to 07 MAR 2013

EC-3, 07 FEB 2013 to 07 MAR 2013

	ELEV 672	D	THRE 672							
BURKE	7000	093°								
SYSCO	6000									
PRATT	5000									
CARLE	4000									
BUGSE	2300									
ANACO	1580									
*LNAV only										
VGS1 and RNAV glidepath not coincident (VGS1 Angle 3.00/TCH 74).										
<table border="1"> <tr> <td>2.9 NM</td> <td>2.9 NM</td> <td>3 NM</td> <td>5.1 NM</td> <td>2.2 NM</td> <td>1.4</td> <td>1.3 NM</td> </tr> </table>				2.9 NM	2.9 NM	3 NM	5.1 NM	2.2 NM	1.4	1.3 NM
2.9 NM	2.9 NM	3 NM	5.1 NM	2.2 NM	1.4	1.3 NM				
CATEGORY	A	B	C	D						
LPV DA	922/24		250 (300-½)							
LNAV/VNAV DA	1119/50		447 (500-1)							
LNAV MDA	1160/24 488 (500-½)		1160/50 488 (500-1)							
CIRCLING	1220-1 548 (600-1)		1220-1½ 548 (600-½) 1240-2 568 (600-2)							



HIRL all Rwys
TDZ/CL all Rwys except 4L and 32L