

KNOX FOUR ARRIVAL

ST-166 (FAA)

CHICAGO O'HARE INTL
CHICAGO, ILLINOIS

EC-3, 07 FEB 2013 to 07 MAR 2013

CHICAGO APP CON
119.0 393.1
ATIS
135.4 269.9

CHICAGO O'HARE
113.9 ORD
Chan 86
N41°57.50'
W87°54.29'

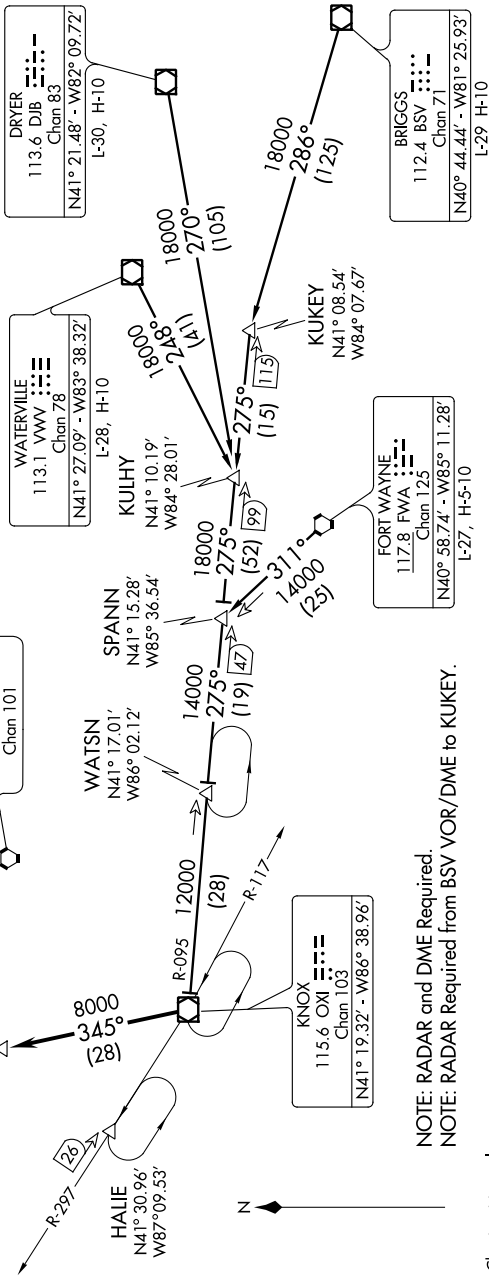
STYLE
N41° 46.44'
W86° 48.50'

**TURBOJET VERTICAL NAVIGATION
PLANNING INFORMATION**
Expect to cross at 12,000'

... From over OXI R-095 to OXI R-345 to STYLE INT, then via 340° heading. Expect vectors to final approach course.

BRIGGS TRANSITION [BSV.OXI4]: From over BSV VOR/DME via BSV R-286 and OXI R-095 to OXI VOR/DME. Thence. . . .
DRYER TRANSITION [DJB.OXI4]: From over DJB VOR/DME via DJB R-270 and OXI R-095 to OXI VOR/DME. Thence. . . .
FORT WAYNE TRANSITION [FWA.OXI4]: From over FWA VORTAC via FWA R-311 and OXI R-095 to OXI VOR/DME. Thence. . . .
WATERVILLE TRANSITION [VWV.OXI4]: From over VWV VOR/DME via VWV R-248 and OXI R-095 to OXI VOR/DME. Thence. . . .

GIPPER
115.4 GJ
Chan 101



NOTE: RADAR and DME Required.
NOTE: RADAR Required from BSV VOR/DME to KUIKY.

NOTE: Chart not to scale.

KNOX FOUR ARRIVAL