

LOC/DME I-SAJ <b>111.75</b> Chan 54 (Y)	APP CRS <b>093°</b>	Rwy Idg TDZE Apt Elev	<b>7500</b> <b>668</b> <b>672</b>
---	------------------------	-----------------------------	---

# ILS or LOC RWY 9L

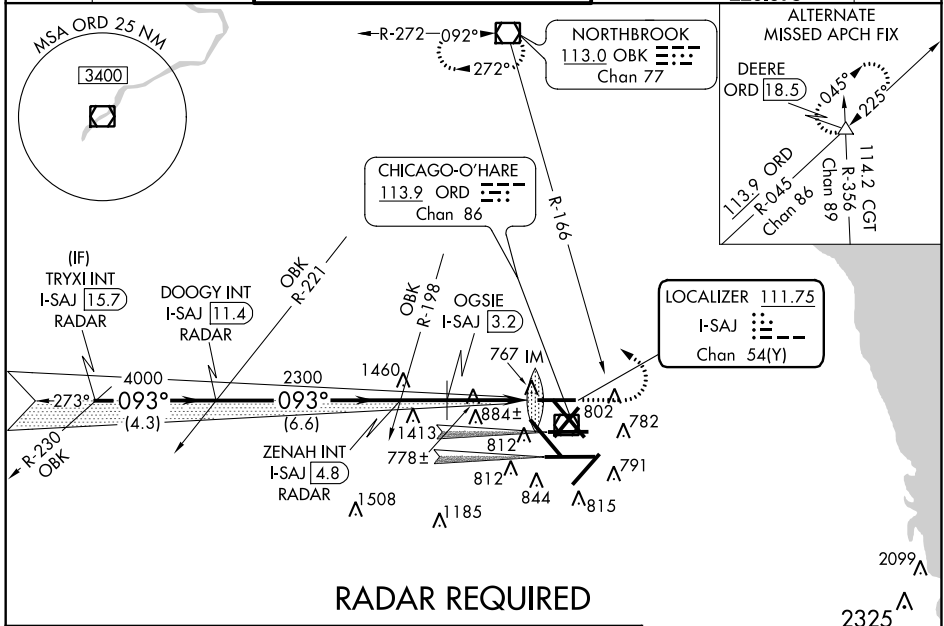
CHICAGO-O'HARE INTL (ORD)

**⚠ Simultaneous approach authorized with Rwy 9R and Rwy 10.**  
 For inop ALSF-2, increase S-ILS 9L visibility to RVR 4000 all Cats. OGSIE FIX minimums: for inop ALSF-2, increase S-LOC 9L Cat C/D visibility to RVR 6000.

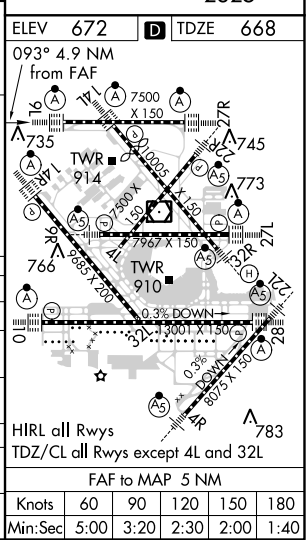
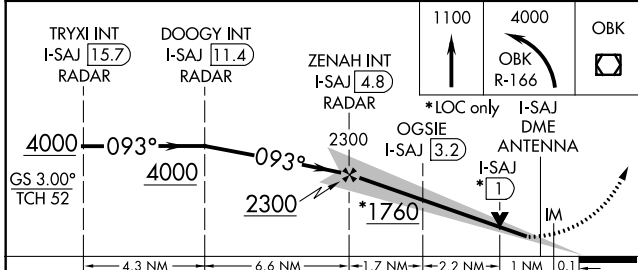
ALSF-2

MISSED APPROACH: Climb to 1100 then climbing left turn to 4000 on OBK VOR/DME R-166 to OBK VOR/DME and hold.

ATIS <b>135.4</b> <b>282.225</b>	CHICAGO APP CON <b>119.0 393.1</b>	O'HARE TOWERS (Rwy 9L/27R) <b>128.15 120.75 126.9 132.7 348.0</b> (CENTER)	(TWR NORTH) GND CON <b>124.125</b>	(TWR CENTER) <b>121.75 (OBND)</b> <b>121.9 (IBND)</b> <b>226.675</b>	CLNC DEL <b>121.6</b>
--	---------------------------------------	--	---------------------------------------	---	--------------------------



## RADAR REQUIRED



CATEGORY	A	B	C	D
S-ILS 9L	868/18 200 (200-½)			
S-LOC 9L	1760/40 1092 (1100-¾)	1760/55 1092 (1100-1½)	1760-2½	1092 (1100-2½)
CIRCLING	1760-1¼ 1088 (1100-1¼)	1760-1½ 1088 (1100-1½)	1760-3	1088 (1100-3)
OGSIE FIX MINIMUMS				
S-LOC 9L	1080/24	412 (500-½)	1080/40	412 (500-¾)
CIRCLING	1220-1	548 (600-1)	1220-1½	1240-2 548 (600-1½)

EC-3, 07 FEB 2013 to 07 MAR 2013

EC-3, 07 FEB 2013 to 07 MAR 2013