

LOC/DME I-ABU <b>111.75</b> Chan 54 (Y)	APP CRS <b>273°</b>	Rwy Idg <b>7500</b> <b>THRE</b> <b>664</b> Apt Elev <b>672</b>
---	------------------------	---

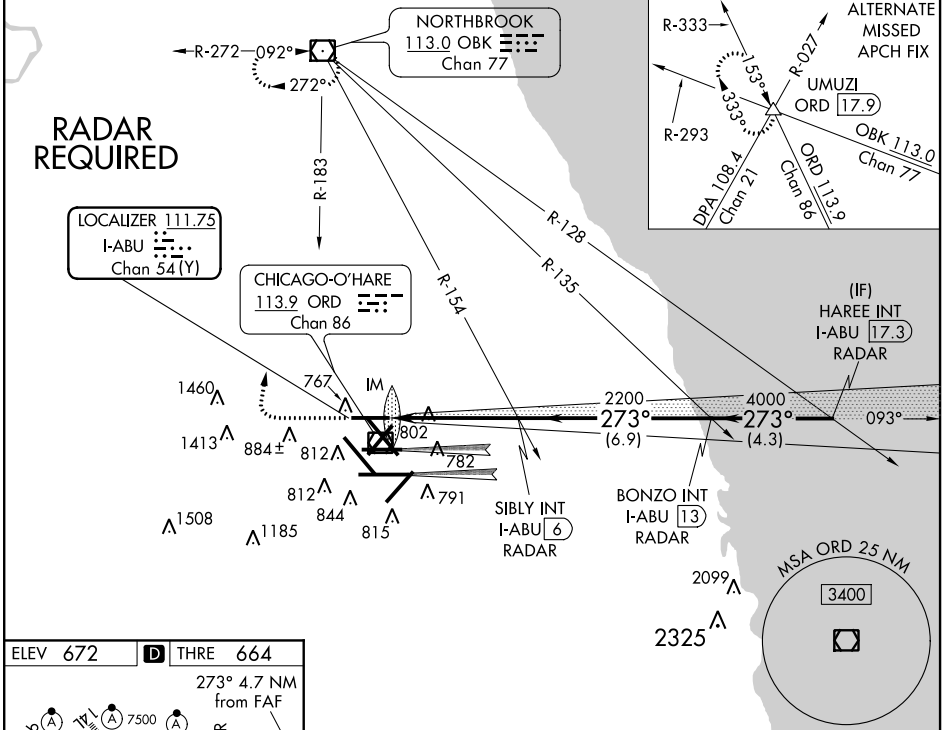
# ILS or LOC RWY 27R

CHICAGO-O'HARE INTL (ORD)

**Simultaneous approach authorized with Rwy 27L and Rwy 28. For inop ALSF, increase S-ILS 27R visibility to RVR 4000 all Cats.**

**MISSED APPROACH:** Climb to 1100 then climbing right turn to 4000 via OBK VOR/DME R-183 to OBK VOR/DME and hold.

ATIS <b>135.4</b> <b>282.225</b>	CHICAGO APP CON <b>119.0 393.1</b>	O'HARE TOWERS (Rwy 9L/27R) <b>128.15 126.9 132.7 348.0</b> (CENTER)	(TWR NORTH) GND CON <b>124.125</b>	(TWR CENTER) (TWR SOUTH) (OBND) (IBND) <b>121.75 121.9 226.675</b>	CLNC DEL <b>121.6</b>
--	---------------------------------------	---	---------------------------------------	---	--------------------------



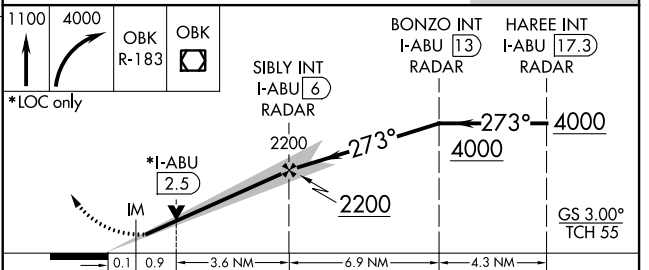
EC-3, 07 FEB 2013 to 07 MAR 2013

EC-3, 07 FEB 2013 to 07 MAR 2013

ELEV 672	<b>D</b> THRE 664
----------	-------------------

HIRL all Rwys  
TDZ/CL all Rwys except 4L and 32L  
FAF to MAP 4.7 NM

Knots	60	90	120	150	180
Min:Sec	4:42	3:08	2:21	1:53	1:34



CATEGORY	A	B	C	D
S-ILS 27R	864/18	200 (200-1/2)		864/24 200 (200-1/2)
S-LOC 27R	1060/24	396 (400-1/2)		1060/40 396 (400-3/4)
CIRCLING	1220-1	548 (600-1)	1220-1 1/2 548 (600-1 1/2)	1240-2 568 (600-2)