

LOC/DME I-AIC 110.5 Chan 42	APP CRS 273°	Rwy Idg TDZE Apt Elev	7782 653 672
---	------------------------	-----------------------------	---

ILS or LOC RWY 27L

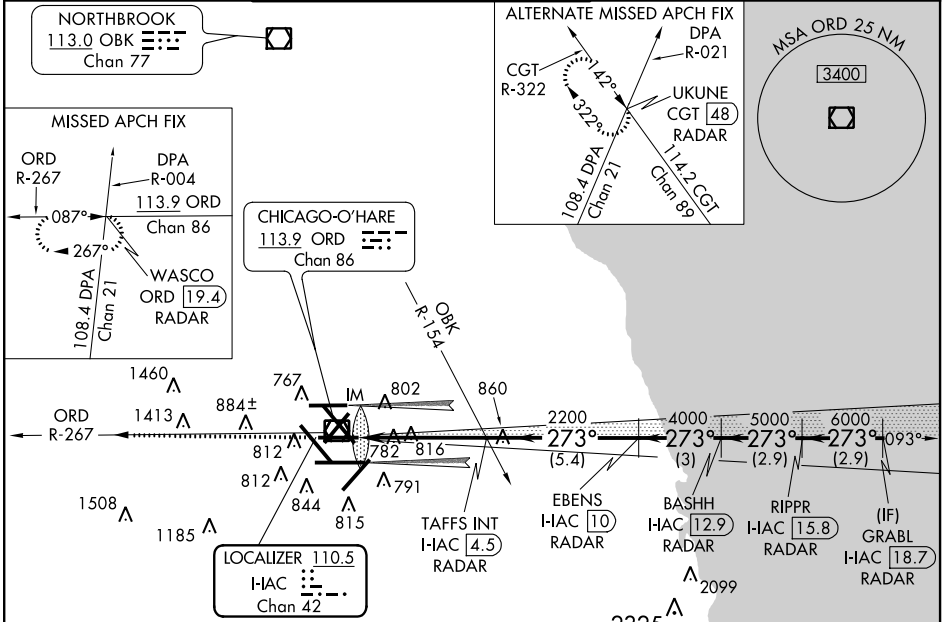
CHICAGO-O'HARE INTL (ORD)

Simultaneous approach authorized with Rwy 27R and Rwy 28. DME or RADAR required. Light poles and sign up to 739 MSL located between 580 ft and 980 ft south of Rwy.

ALSF-2

MISSED APPROACH: Climb to 4000 via ORD VOR/DME R-267 to WASCO INT/ORD 19.4 DME/RADAR and hold.

ATIS 135.4 282.225	CHICAGO APP CON 119.0 393.1	O'HARE TOWERS (Rwy 9L/27R) 128.15 126.9 132.7 348.0	(TWR NORTH) GND CON (TWR CENTER) 124.125 121.75 (OBND) 121.9 (IBND) 226.675	CLNC DEL 121.6
--	---------------------------------------	--	---	--------------------------



EC-3, 07 FEB 2013 to 07 MAR 2013

EC-3, 07 FEB 2013 to 07 MAR 2013

ELEV 672 TDZE 653

273° 4.7 NM from FAF

HIRL all Rwys
TDZ/CL all Rwys except 4L and 32L

FAF to MAP 4.7 NM

Knots	60	90	120	150	180
Min:Sec	4:42	3:08	2:21	1:53	1:34

RADAR REQUIRED

4000	ORD R-267	WASCO INT	VGSI and ILS glidepath not coincident (VGSI Angle 3.00/TCH 72).		GRABL I-AIC 18.7 RADAR
			BASHH I-AIC 12.9 RADAR	RIPPR I-AIC 15.8 RADAR	
			EBENS I-AIC 10 RADAR		
			TAFSS INT I-AIC 4.5 RADAR		
			I-AIC DME ANTENNA		
			I-AIC 0.1		
			I-AIC 1		
			IM		
			2200		
			4000		
			5000		
			6000		
			7000		
			GS 3.00° TCH 52		
			0.1 NM	3.5	5.4 NM
			3 NM	2.9 NM	2.9 NM
CATEGORY	A	B	C	D	
S-ILS 27L	853/18				200 (200-1/2)
S-LOC 27L	1080/24	427 (500-1/2)	1080/40 427 (500-3/4)	1080/50 427 (500-1)	
CIRCLING	1220-1	548 (600-1)	1220-1 1/2 548 (600-1 1/2)	1240-2 568 (600-2)	