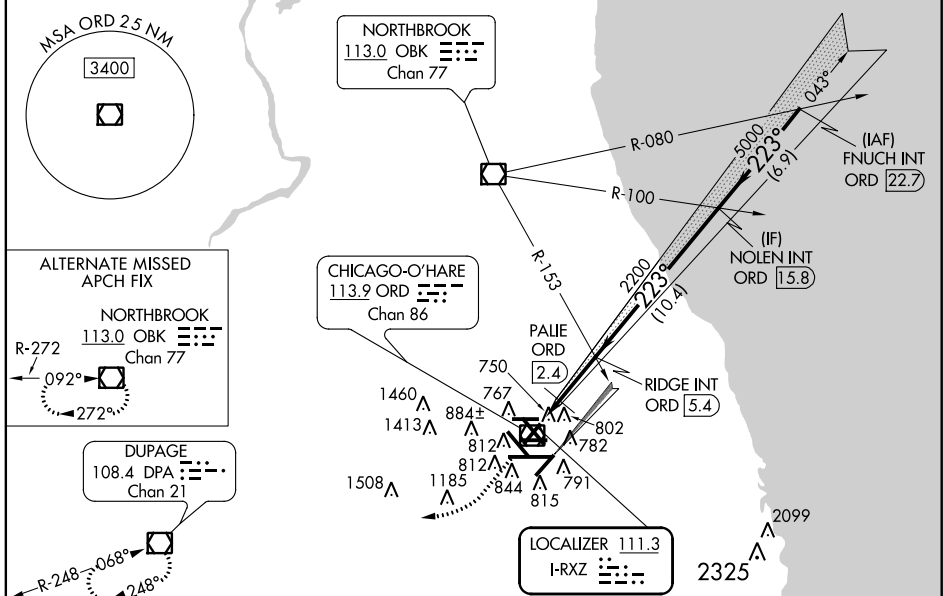


LOC I-RXZ 111.3	APP CRS 223°	Rwy ldg THRE Apt Elev	7500 648 672
---------------------------	------------------------	-----------------------------	---

ILS or LOC RWY 22R

CHICAGO-O'HARE INTL (ORD)

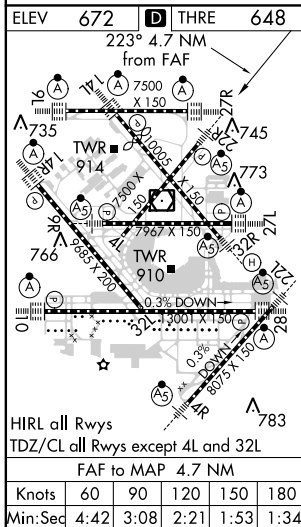
<p>Simultaneous approach authorized with Rwy 22L. *DME from ORD VOR/DME.</p>		<p>MALS R</p>	<p>MISSED APPROACH: Climb to 1300 then climbing right turn to 4000 direct DPA VOR/DME and hold.</p>		
<p>ATIS 135.4 282.225</p>	<p>CHICAGO APP CON 119.0 393.1</p>	<p>O'HARE TOWERS (Rwy 9L/27R) 128.15 126.9 132.7 348.0 (CENTER)</p>		<p>(TWR NORTH) GND CON (TWR CENTER) 124.125 121.75 (OBND) 121.9 (IBND) 226.675</p>	<p>CLNC DEL 121.6</p>



EC-3, 07 FEB 2013 to 07 MAR 2013

EC-3, 07 FEB 2013 to 07 MAR 2013

RADAR REQUIRED



ELEV 672	THRE 648	223° 4.7 NM from FAF	1300	4000	DPA	VGSI and ILS glidepath not coincident (VGSI Angle 3.00/TCH 69).	FNUCH INT ORD 22.7
<p>#LOC only</p>		<p>RIDGE INT ORD 5.4</p>		<p>NOLEN INT ORD 15.8</p>		<p>7000</p>	
<p>PALIE ORD 2.4</p>		<p>2200</p>		<p>5000</p>		<p>GS 3.00° TCH 49</p>	
<p>1.7 NM</p>		<p>3 NM</p>		<p>10.4 NM</p>		<p>6.9 NM</p>	
CATEGORY	A	B	C	D			
S-ILS 22R	848/18				200 (200-½)		
S-LOC 22R	1220/24	572 (600-½)	1220-1¼	572 (600-1¼)			
CIRCLING	1220-1	548 (600-1)	1220-1½	548 (600-½)	1240-2	568 (600-2)	
*PALIE FIX MINIMUMS							
S-LOC 22R	980/24	332 (400-½)	980/26	332 (400-¾)			
CIRCLING	1220-1	548 (600-1)	1220-1½	548 (600-½)	1240-2	568 (600-2)	