

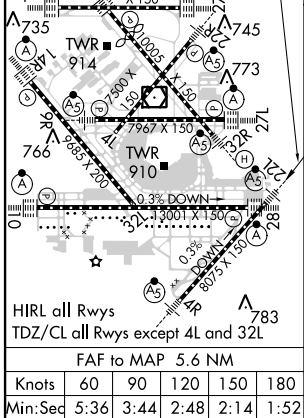
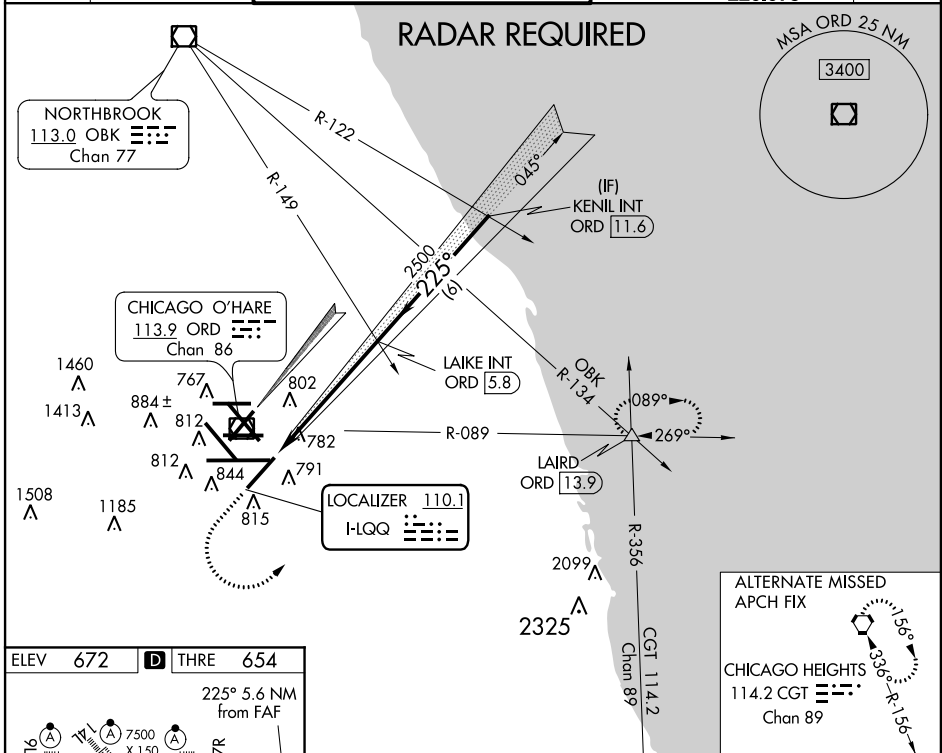
LOC I-LQQ <b>110.1</b>	APP CRS <b>225°</b>	Rwy ldg THRE Apt Elev	<b>8075</b> <b>654</b> <b>672</b>
---------------------------	------------------------	-----------------------------	---

# ILS or LOC RWY 22L

CHICAGO-O'HARE INTL (ORD)

Simultaneous approach authorized with Rwy 22R.		MALSRL 	MISSED APPROACH: Climb to 1100 then climbing left turn to 4000 on ORD VOR/DME R-089 to LAIRD INT/ORD 13.9 DME and hold.
--	--	------------	---

ATIS <b>135.4</b> <b>282.225</b>	CHICAGO APP CON <b>119.0 393.1</b>	O'HARE TOWERS (Rwy 9L/27R) <b>128.15 126.9 132.7 348.0</b> (CENTER)	(TWR NORTH) GND CON (TWR CENTER) <b>124.125 121.75</b> (OBND) <b>121.9</b> (IBND) <b>226.675</b>	CLNC DEL <b>121.6</b>
--	---------------------------------------	---	---	--------------------------



1100	4000	LAIRD	VGSI and ILS glidepath not coincident (VGSI Angle 3.0/TCH 73).	KENIL INT ORD 11.6
↑	ORD R-089	△		
LAIRD ORD 13.9 2500 225° 4000 2500 GS 3.00° TCH 55				
5.6 NM		6 NM		
CATEGORY	A	B	C	D
S-ILS 22L	854/18		200 (200-½)	
S-LOC 22L	1120/24	466 (500-½)	1120/50	466 (500-1)
CIRCLING	1220-1	548 (600-1)	1220-1½ 548 (600-½)	1240-2 568 (600-2)

EC-3, 07 FEB 2013 to 07 MAR 2013

EC-3, 07 FEB 2013 to 07 MAR 2013