

LOC/DME I-OHA 110.9 Chan 46	APP CRS 143°	Rwy ldg TDZE Apt Elev	8007 653 672
---	------------------------	-----------------------------	---

ILS or LOC RWY 14L

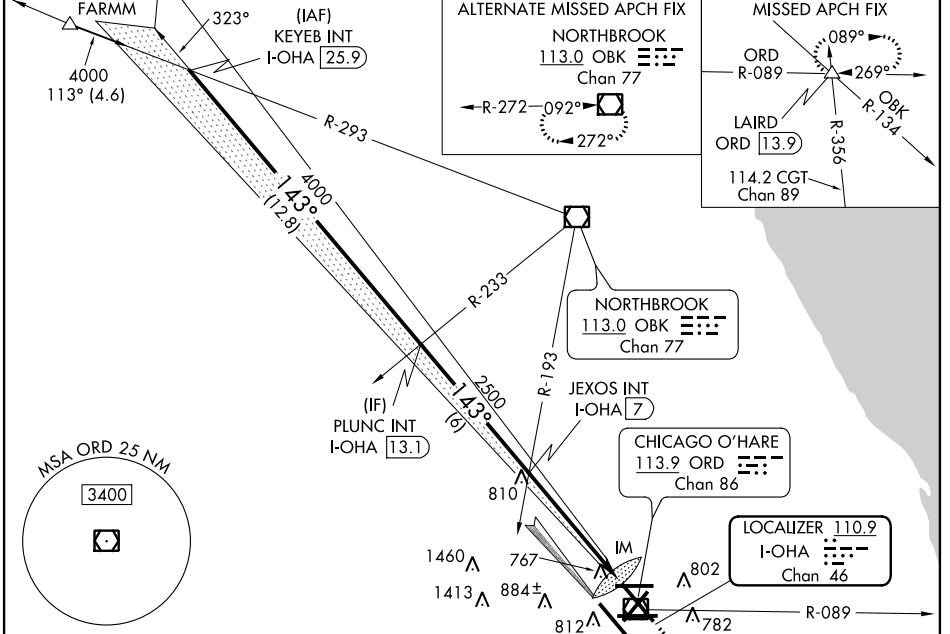
CHICAGO-O'HARE INTL (ORD)

Simultaneous approach authorized with Rwy 14R.

ALSIF-2

MISSED APPROACH: Climb to 1200 then climbing left turn to 4000 via heading 059° and ORD R-089 to LAIRD INT and hold, continue climb-in-hold to 4000.

ATIS 282.225	CHICAGO APP CON 119.0 393.1	O'HARE TOWERS 128.15 (Rwy 9L/27R) 120.75 126.9 132.7 348.0 (CENTER)	(TWR NORTH) GND CON 124.125	(TWR CENTER) CON (OBND) 121.75 121.9 (IBND) 226.675	CLNC DEL 121.6
------------------------	---------------------------------------	---	---------------------------------------	---	--------------------------



ELEV 672 TDZE 653

HIRL all Rwys
TDZ/CL all Rwys except 4L and 32L
FAF to MAP 5.5 NM

Knots	60	90	120	150	180
Min:Sec	5:30	3:40	2:45	2:12	1:50

Procedure Turn NA

VGSI and ILS glidepath not coincident (VGSI Angle 3.00/TCH 75).

1200 4000

hdg 059°

ORD R-089 LAIRD

KEYEB INT I-OHA 25.9	PLUNC INT I-OHA 13.1	JEXOS INT I-OHA 7	I-OHA 2.8	IM I-OHA 1.5
4000	4000	2500	2500	
12.8 NM	6 NM	4.2 NM	1.2	0.1

CATEGORY	A	B	C	D
S-ILS 14L		853/18	200 (200-½)	
S-LOC 14L	1140/24	487 (500-½)	1140/40 487 (500-¾)	1140/50 487 (500-1)
CIRCLING	1220-1	548 (600-1)	1220-1½ 548 (600-1½)	1240-2 568 (600-2)

EC-3, 07 FEB 2013 to 07 MAR 2013

EC-3, 07 FEB 2013 to 07 MAR 2013