

LOC/DME I-MED 111.1 Chan 48	APP CRS 093°	Rwy Idg 12246 TDZE 672 Apt Elev 672
--	------------------------	--

ILS or LOC RWY 10

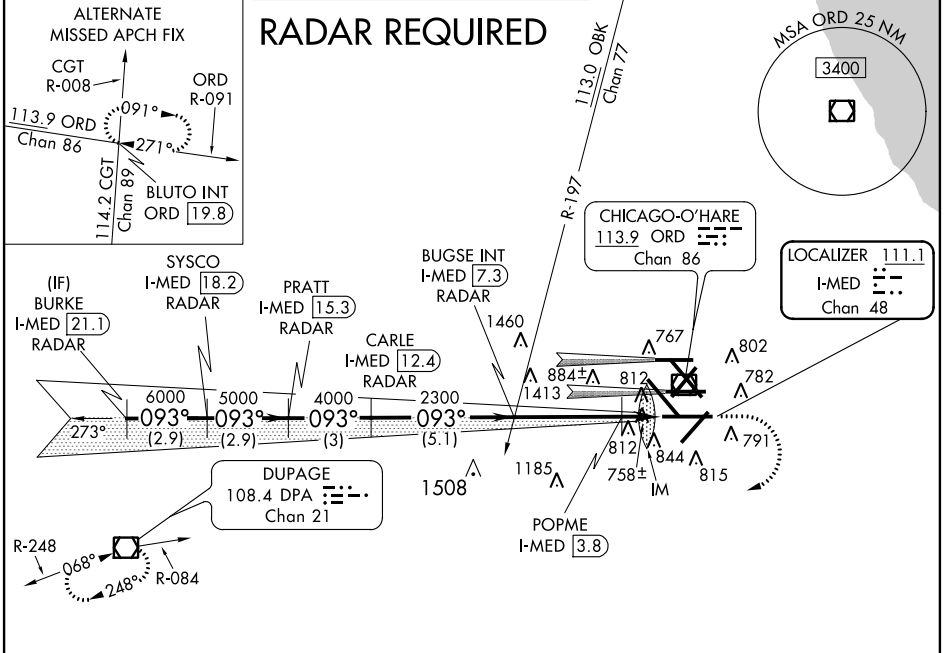
CHICAGO-O'HARE INTL (ORD)

Simultaneous approach authorized with Rwy 9R/L. DME or RADAR required.



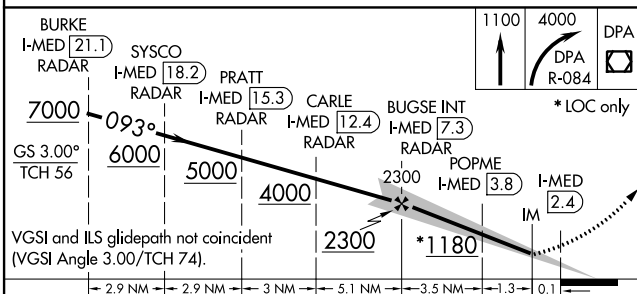
MISSED APPROACH: Climb to 1100 then climbing right turn to 4000 via DPA VOR/DME R-084 to DPA VOR/DME and hold.

ATIS 135.4 282.225	CHICAGO APP CON 119.0 393.1	O'HARE TOWERS 128.15 (Rwy 9L/27R) 120.75 126.9 132.7 348.0 (CENTER)	(TWR NORTH) GND CON (TWR CENTER) 124.125 121.75 ORD (OBND) 121.9 (IBND) 226.675	CLNC DEL 121.6
--	---------------------------------------	---	--	--------------------------



EC-3, 07 FEB 2013 to 07 MAR 2013

EC-3, 07 FEB 2013 to 07 MAR 2013



ELEV 672	TDZE 672
*LOC only	
093° 4.9 NM from FAF 0.3% DOWN 0.3% DOWN 0.3% DOWN	
HIRL all Rwys TDZ/CL all Rwys except 4L and 32L FAF to MAP 4.9 NM	
Knots	60 90 120 150 180
Min:Sec	4:54 3:16 2:27 1:58 1:38

CATEGORY	A	B	C	D
S-ILS 10		872/18	200 (200-½)	
S-LOC 10	1180/24	508 (600-½)	1180/50	508 (600-1)
CIRCLING	1220-1	548 (600-1)	1220-1½	1240-2 548 (600-1½)
POPME FIX MINIMUMS				
S-LOC 10	1100/24	428 (500-½)	1100/40 428 (500-¾)	1100/50 428 (500-1)
CIRCLING	1220-1	548 (600-1)	1220-1½ 548 (600-1½)	1240-2 568 (600-2)