

**ILS RWY 28 (CAT II)**  
CHICAGO-O'HARE INTL (ORD)

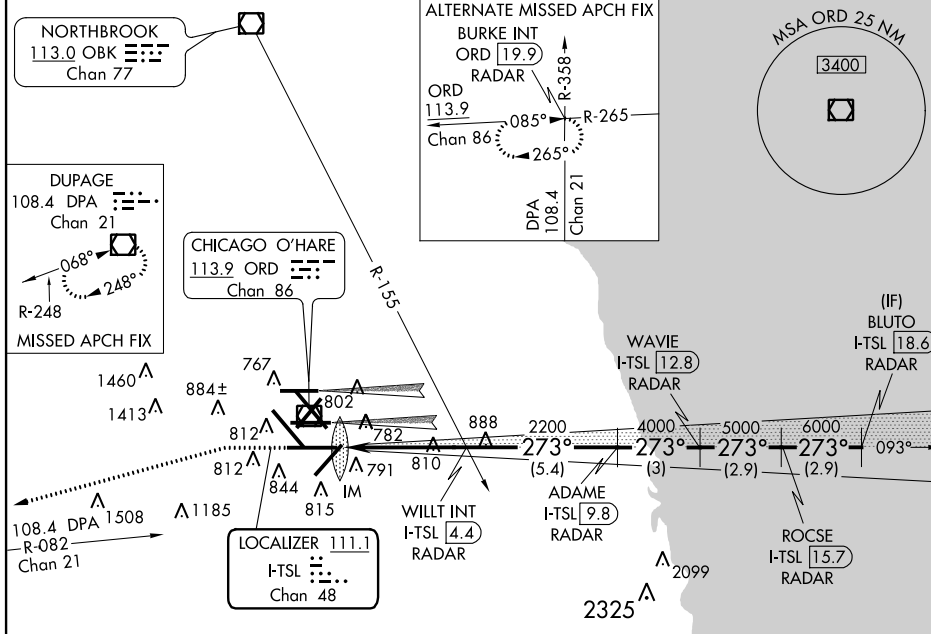
LOC/DME I-TSL <b>111.1</b> Chan <b>48</b>	APP CRS <b>273°</b>	Rwy ldg <b>13001</b> TDZE <b>651</b> Apt Elev <b>672</b>
---	------------------------	--

Simultaneous approach authorized with Rwy 27L/R. DME or RADAR required.



MISSED APPROACH: Climb to 1100 then climbing left turn to 4000 via heading 215° and DPA VOR/DME R-082 to DPA VOR/DME and hold.

ATIS <b>135.4</b> <b>282.225</b>	CHICAGO APP CON <b>119.0 393.1</b>	O'HARE TOWERS (Rwy 9L/27R) <b>128.15 120.75 126.9 132.7 348.0</b> (CENTER)	(TWR NORTH) GND CON (TWR CENTER) <b>124.125 121.75 (OBND) 121.9 (IBND) 226.675</b>	CLNC DEL <b>121.6</b>
--	---------------------------------------	--	---	--------------------------

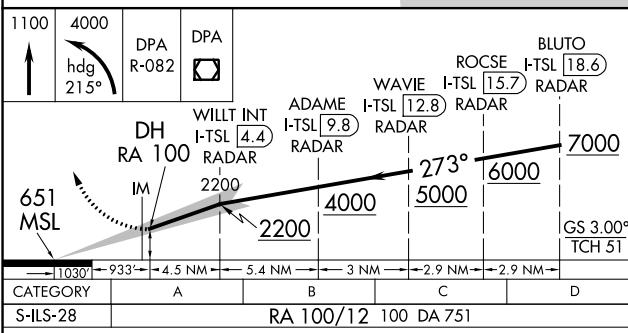
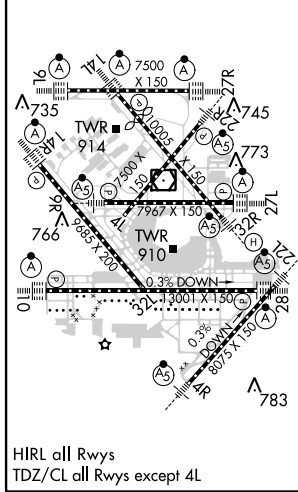


EC-3, 07 FEB 2013 to 07 MAR 2013

EC-3, 07 FEB 2013 to 07 MAR 2013

ELEV 672	D	TDZE 651
----------	---	----------

**RADAR REQUIRED**



CATEGORY	A	B	C	D
S-ILS-28	RA 100/12 100 DA 751			

**CATEGORY II ILS - SPECIAL AIRCREW & AIRCRAFT CERTIFICATION REQUIRED**