

LOC/DME I-IAC 110.5 Chan 42	APP CRS 273°	Rwy Idg TDZE Apt Elev	7782 653 672
---	------------------------	-----------------------------	---

ILS RWY 27L (CAT II)

CHICAGO-O'HARE INTL (ORD)

Simultaneous approach authorized with Rwy 27R and Rwy 28. DME or RADAR required. Light poles and sign up to 739' MSL located between 580' ft and 980' ft south of Rwy.

ALSF-2
MISSED APPROACH: Climb to 4000 via ORD VOR/DME R-267 to WASCO INT/ORD 19.4 DME/RADAR and hold.

ATIS 135.4 282.225	CHICAGO APP CON 119.0 393.1	O'HARE TOWERS (Rwy 9L/27R) 128.15 126.9 132.7 348.0 (CENTER)	(TWR NORTH) GND CON (TWR CENTER) 124.125 121.75 (OBND) 121.9 (IBND) 226.675	CLNC DEL 121.6
--	---------------------------------------	---	---	--------------------------

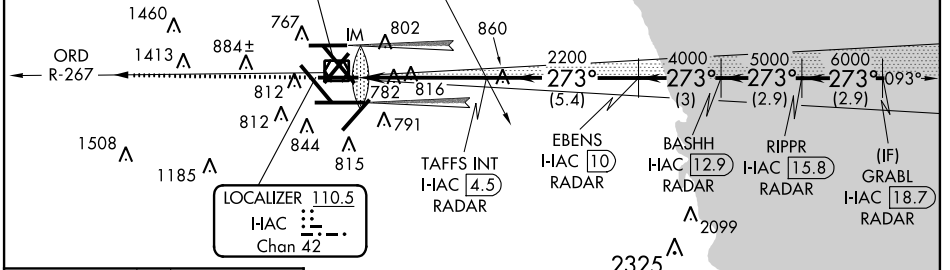
NORTHBROOK
113.0 OBK
Chan 77

ALTERNATE MISSED APCH FIX

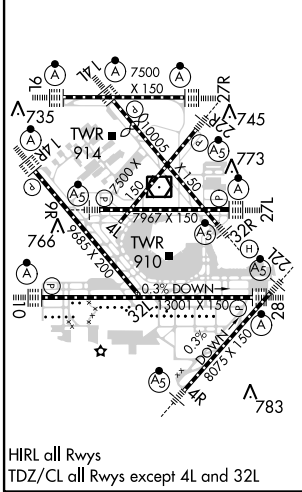
MSA ORD 25 NM
3400

MISSED APCH FIX

CHICAGO-O'HARE
113.9 ORD
Chan 86

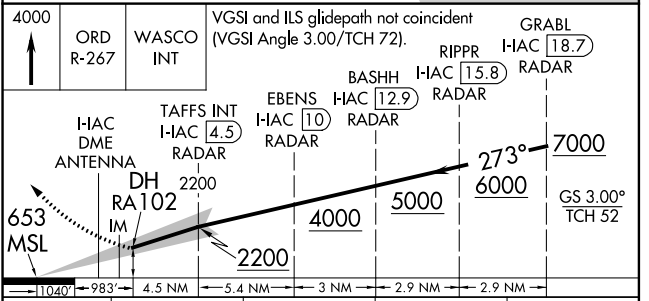


ELEV 672	D	TDZE 653
----------	---	----------



HIRL all Rwys
TDZ/CL all Rwys except 4L and 32L

RADAR REQUIRED



CATEGORY	A	B	C	D
S-ILS 27L	RA 102/12 100 DA 753			

CATEGORY II ILS - SPECIAL AIRCREW & AIRCRAFT CERTIFICATION REQUIRED

EC-3, 07 FEB 2013 to 07 MAR 2013

EC-3, 07 FEB 2013 to 07 MAR 2013