

LOC/DME I-OHA <b>110.9</b> Chan <b>46</b>	APP CRS <b>143°</b>	Rwy ldg TDZE Apt Elev	<b>8007</b> <b>653</b> <b>672</b>
---	------------------------	-----------------------------	---

# ILS RWY 14L (CAT III)

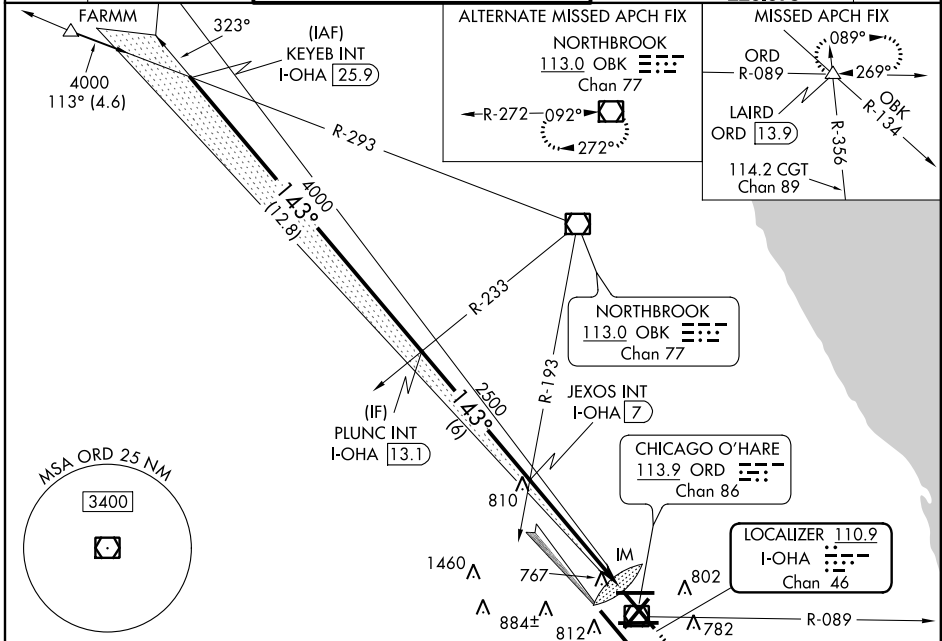
CHICAGO-O'HARE INTL (ORD)

Simultaneous approach authorized with Rwy 14R.

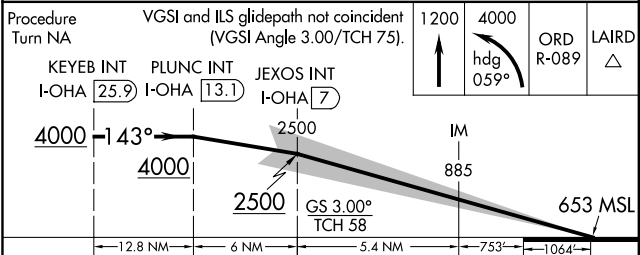
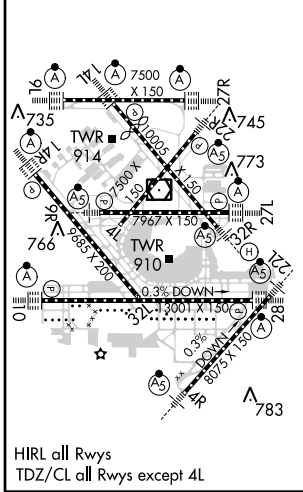
ALS-F-2

MISSED APPROACH: Climb to 1200 then climbing left turn to 4000 via heading 059° and ORD R-089 to LAIRD INT and hold, continue climb-in-hold to 4000.

ATIS <b>282.225</b>	CHICAGO APP CON <b>119.0 393.1</b>	O'HARE TOWERS (Rwy 9L/27R) <b>128.15 126.9 132.7 348.0</b> (CENTER)	(TWR NORTH) GND CON <b>124.125</b>	(TWR CENTER) CON <b>121.75</b> (OBND) <b>121.9</b> (IBND) <b>226.675</b>	CLNC DEL <b>121.6</b>
------------------------	---------------------------------------	---	---------------------------------------	---	--------------------------



ELEV	672	TDZE	653
------	-----	------	-----



CATEGORY	A	B	C	D
S-ILS 14L	Cat IIIa	RVR 07		
S-ILS 14L	Cat IIIb	RVR 06		
S-ILS 14L	Cat IIIc	NA		

**CATEGORY III ILS - SPECIAL AIRCREW & AIRCRAFT CERTIFICATION REQUIRED**

EC-3, 07 FEB 2013 to 07 MAR 2013

EC-3, 07 FEB 2013 to 07 MAR 2013